



Marilyn Tierney
District Biologist

United States Department of Agriculture
Forest Service
Tahoe National Forest

15924 Hwy. 49
Camptonville, CA 95922

Voice: (530) 288 3231 ext. 233
FAX: (530) 288 0727
Email: mtierney@fs.fed.us

*PER YOUR
REQUEST*

*Rec'd
August 4, 2009*

June 1, 2004

Location: Little Oregon Creek and Oregon Hill Road; 100% clear, no wind.

Present: M. Tierney, R. Miller, R. Kartes, B. Graham, J. Schofield, R. Woodrow, J. Stone

1945 hrs. arrived at southern pond. Heard frog jump into pond upon our arrival; saw motion of frog leaving the far northeastern bank and land midway in pond (our approach was from the south). This frog was easily sighted upon first arrival by searching area where in entered pond. Sighted a total of 4 adult frogs in pond after approximately 45 minutes of observing. Three were well distinguished as California red-legged frogs by white on upper lip area; fourth frog was less distinct. All had noticeable auburn color. All frogs remained motionless in pond while we were there. Pond is well vegetated with *Potamogeton* sp. covering 90% of pond surface. Some tadpoles were seen, but vegetative cover prevented our identifying tadpoles to genus.

Moved to northern pond alongside road until dark. Eventually located 4 adult frogs in this pond; all observations of frogs were made in twilight; none were made upon first arrival at pond. Once dark, one frog moved towards us.

My impression is that the water level is lower than usual at each of these ponds for this time of year, and there is considerably more submergent vegetation and less open water; but this is based on a limited number of observations and subjective memory.

2130 departed.

Additional notes: no spraying signs are well posted along Oregon Hill Road; gate to road along Little Oregon Creek was closed.

Marilyn Tierney/R5/USDAFS

To Cindy K Roberts/R5/USDAFS,

02/16/2005 06:37 PM

cc

bcc

Subject Little Willow Creek

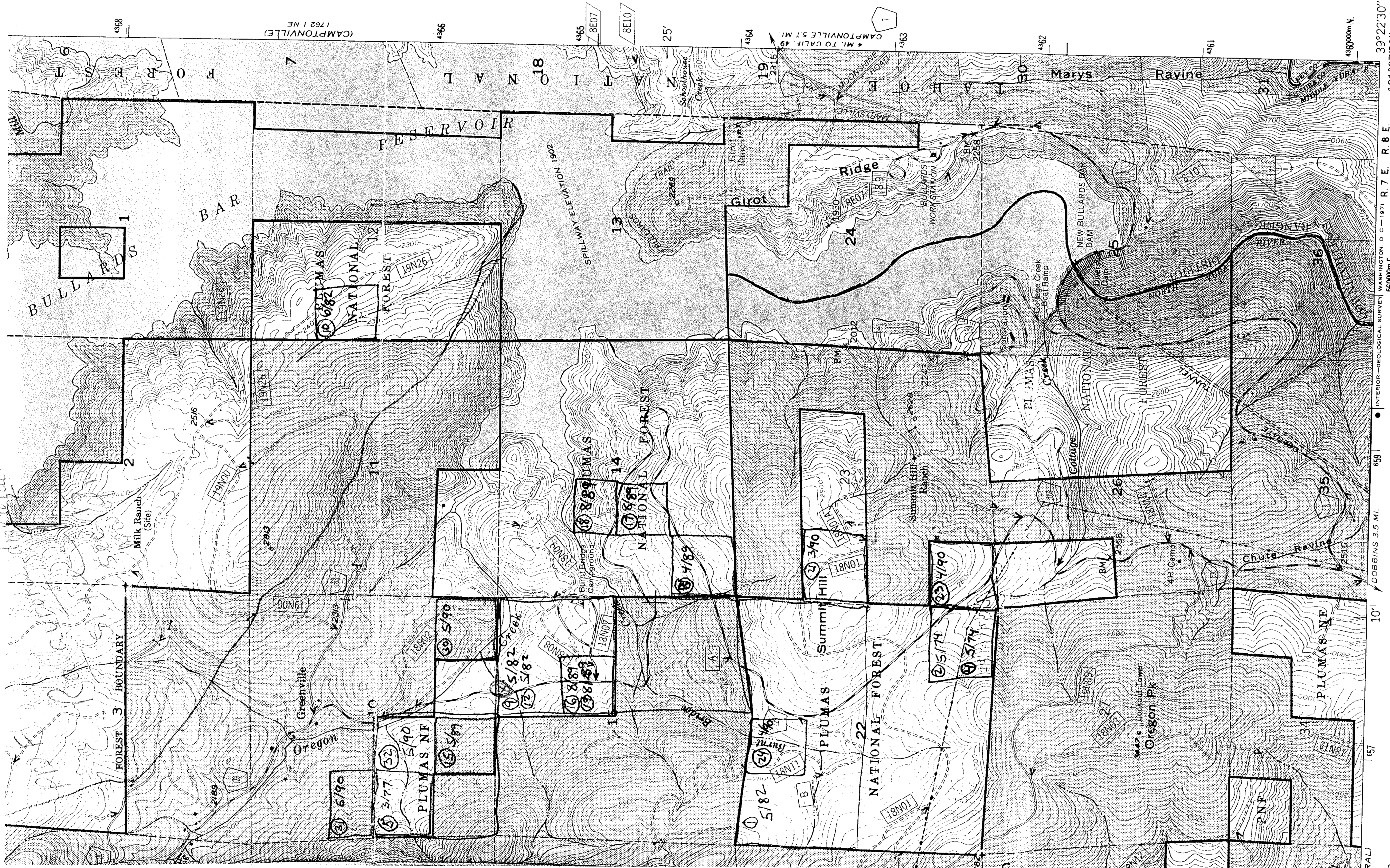
*Should be
L. Oregon Crk
UMT*

Just want to let you know a few things. I was in the vicinity, so I visited this site on February 10, 2005, at 1900 hours. I saw one adult Ca. red-legged frog in the lower pond (the pond away from the road).

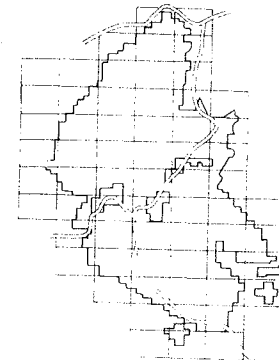
There is lots of blowdown, much woody debris in this pond, and the water level is lower than I have ever seen it. (Bullards Reservoir water level was so low in December, no boat launching was possible at Cottage Creek Boat Ramp.) This pond appears to be quickly filling in. There also has been mastication or brush cutting of some sort close to the ponds-the upper pond closest to the road is now very visible from the Oregon Hill Road, with some fairly simple walking access. I saw no frogs in the upper pond. It was unclear to me if the mastication was simply roadside brushing, as it appeared to have also occurred along the forest service dirt road that is gated. I arrived after dark, and did not look around extensively at the cutting. Do you know anything about it?

The "no spraying signs" were still intact.

Marilyn Tierney, District Biologist
Yuba River Ranger District, Tahoe National Forest
15924 Hwy 49, Camptonville, CA 95922-9707
phone - 530-288-3231
e-mail - mtierney@fs.fed.us



- Primary Highway
- Secondary Highway
- Paved Road
- Unpaved Road
- Gravel Road
- Dirt Road
- Interstate
- U.S. Highway
- State Highway
- County Road
- Primary Forest Route



CHALLENGE, CALIF.
 NW/4 NEVADA CITY 15' QUADRANGLE
 N3922.5 — W12107.5/7.5

0 10' 20' 30' 40' 50' 60' 70' 80' 90' 100' 110' 120' 130' 140' 150' 160' 170' 180' 190' 200'

0 10' 20' 30' 40' 50' 60' 70' 80' 90' 100' 110' 120' 130' 140' 150' 160' 170' 180' 190' 200'

1 MILE 1 KILOMETER

INTERIOR—GEOLOGICAL SURVEY, WASHINGTON, D. C.—1971. R. 7. E. R. 8. E. 66000m E. 39°22'30" 121°07'30"

NEVADA CITY
 1762 1 SE