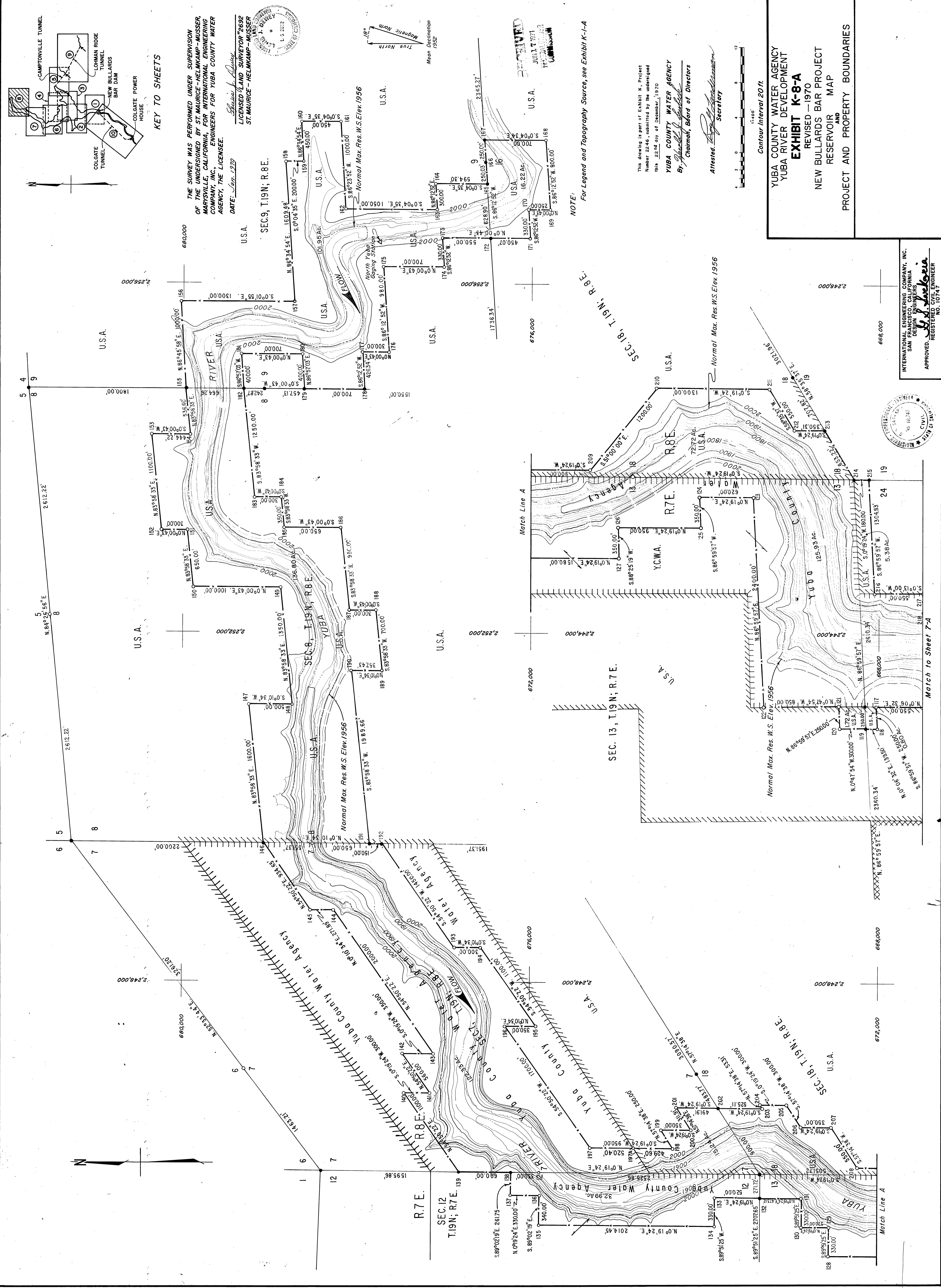


DRAWING NUMBER
K-8-A

DRAWING NUMBER

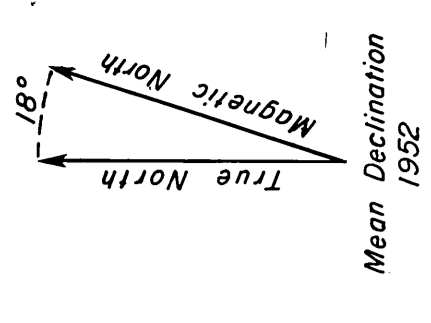
DRAWING NUMBER

DRAWING NUMBER
K-8-A



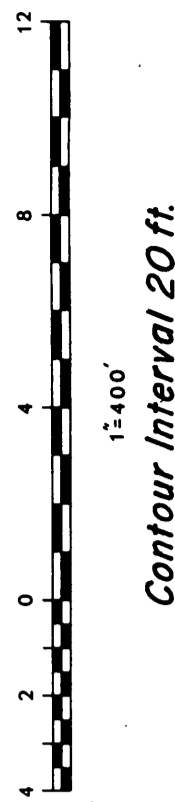
KEY TO SHEETS

THE SURVEY WAS PERFORMED UNDER SUPERVISION OF THE UNDERIGNED BY ST. MAURICE - HELMKAMP - MUSSER, MARYSVILLE, CALIFORNIA, FOR INTERNATIONAL ENGINEERING COMPANY, INC., ENGINEERS FOR YUBA COUNTY WATER AGENCY, THE LICENSEE.
DATE: Sep. 1970
LICENSED LAND SURVEYOR 2692
ST. MAURICE - HELMKAMP - MUSSER



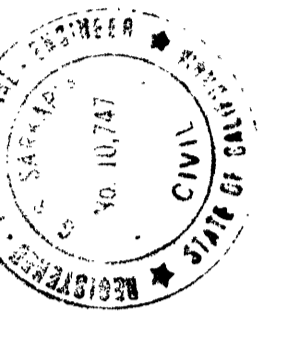
NOTE:
For Legend and Topography Source, see Exhibit K-1-A

This drawing is part of Exhibit K, Project Number 2246, submitted by the undersigned this 22nd day of December, 1970
YUBA COUNTY WATER AGENCY
By: *[Signature]*
Chairman, Board of Directors
Attested: *[Signature]*
Secretary



YUBA COUNTY WATER AGENCY
YUBA RIVER DEVELOPMENT
EXHIBIT K-8-A
REVISED - 1970
NEW BULLARDS BAR PROJECT
RESERVOIR MAP
PROJECT AND PROPERTY BOUNDARIES

APPROVED
[Signature]
REGISTERED PROFESSIONAL ENGINEER
NO. 10747



2246-186