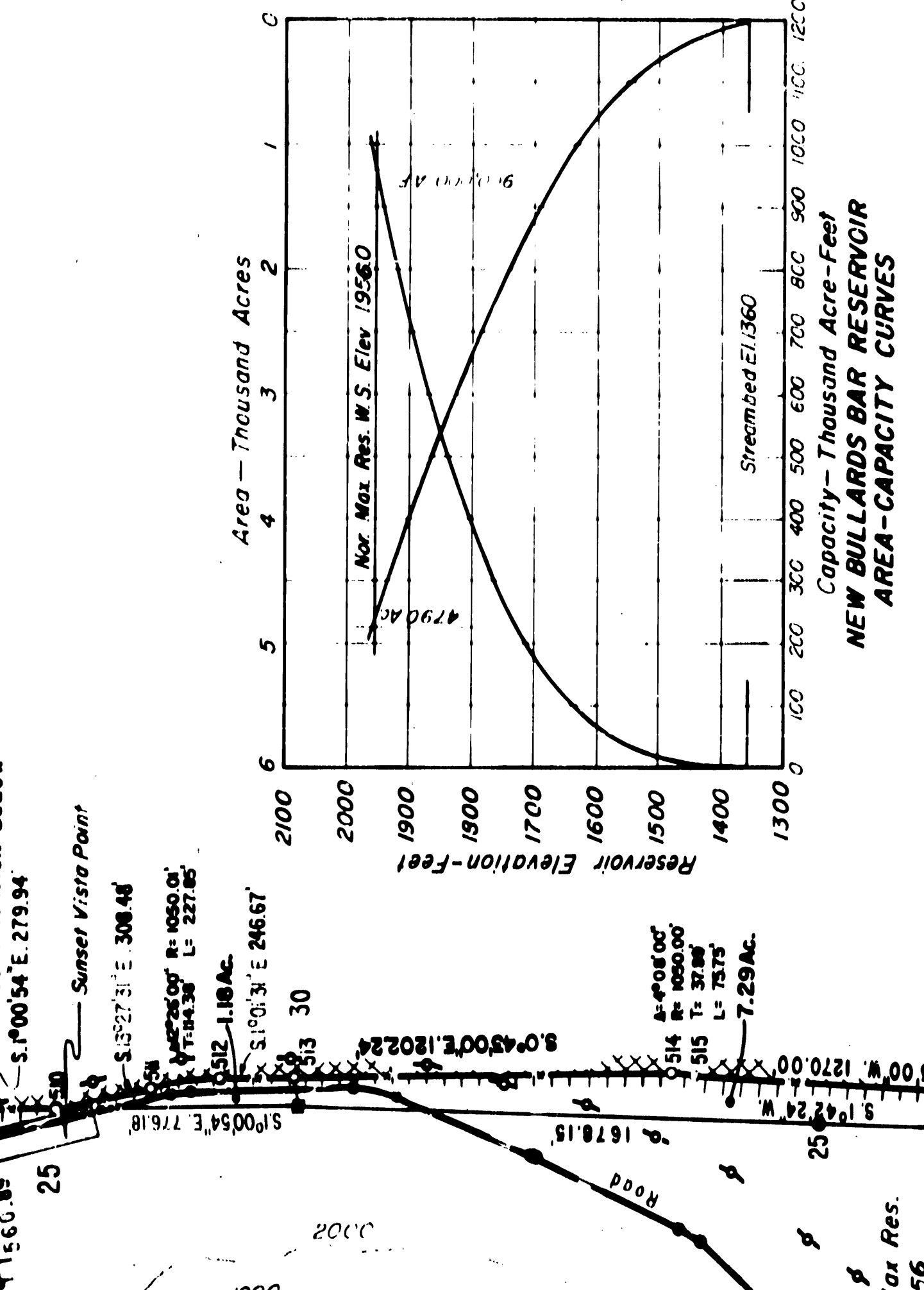


NOTES:
 1. 12 KV Transmission Line owned and maintained by PACIFIC GAS AND ELECTRIC COMPANY for power supply to:
 Dam Lighting System
 Damper Carriage
 Spillway Gates
 Dam Tender House
 Forest Service Admin. Site

BOUNDARY TABULATION

STATION TO STATION	BEARING	DIST.	AREA
1-2	S 89° 32' 30" E	100.00	100.00
2-3	S 89° 32' 30" E	100.00	100.00
3-4	S 89° 32' 30" E	100.00	100.00
4-5	S 89° 32' 30" E	100.00	100.00
5-6	S 89° 32' 30" E	100.00	100.00
6-7	S 89° 32' 30" E	100.00	100.00
7-8	S 89° 32' 30" E	100.00	100.00
8-9	S 89° 32' 30" E	100.00	100.00
9-10	S 89° 32' 30" E	100.00	100.00
10-11	S 89° 32' 30" E	100.00	100.00
11-12	S 89° 32' 30" E	100.00	100.00
12-13	S 89° 32' 30" E	100.00	100.00
13-14	S 89° 32' 30" E	100.00	100.00
14-15	S 89° 32' 30" E	100.00	100.00
15-16	S 89° 32' 30" E	100.00	100.00
16-17	S 89° 32' 30" E	100.00	100.00
17-18	S 89° 32' 30" E	100.00	100.00
18-19	S 89° 32' 30" E	100.00	100.00
19-20	S 89° 32' 30" E	100.00	100.00
20-21	S 89° 32' 30" E	100.00	100.00
21-22	S 89° 32' 30" E	100.00	100.00
22-23	S 89° 32' 30" E	100.00	100.00
23-24	S 89° 32' 30" E	100.00	100.00
24-25	S 89° 32' 30" E	100.00	100.00
25-26	S 89° 32' 30" E	100.00	100.00
26-27	S 89° 32' 30" E	100.00	100.00
27-28	S 89° 32' 30" E	100.00	100.00
28-29	S 89° 32' 30" E	100.00	100.00
29-30	S 89° 32' 30" E	100.00	100.00
30-31	S 89° 32' 30" E	100.00	100.00
31-32	S 89° 32' 30" E	100.00	100.00
32-33	S 89° 32' 30" E	100.00	100.00
33-34	S 89° 32' 30" E	100.00	100.00
34-35	S 89° 32' 30" E	100.00	100.00
35-36	S 89° 32' 30" E	100.00	100.00
36-37	S 89° 32' 30" E	100.00	100.00
37-38	S 89° 32' 30" E	100.00	100.00
38-39	S 89° 32' 30" E	100.00	100.00
39-40	S 89° 32' 30" E	100.00	100.00
40-41	S 89° 32' 30" E	100.00	100.00
41-42	S 89° 32' 30" E	100.00	100.00
42-43	S 89° 32' 30" E	100.00	100.00
43-44	S 89° 32' 30" E	100.00	100.00
44-45	S 89° 32' 30" E	100.00	100.00
45-46	S 89° 32' 30" E	100.00	100.00
46-47	S 89° 32' 30" E	100.00	100.00
47-48	S 89° 32' 30" E	100.00	100.00
48-49	S 89° 32' 30" E	100.00	100.00
49-50	S 89° 32' 30" E	100.00	100.00
50-51	S 89° 32' 30" E	100.00	100.00
51-52	S 89° 32' 30" E	100.00	100.00
52-53	S 89° 32' 30" E	100.00	100.00
53-54	S 89° 32' 30" E	100.00	100.00
54-55	S 89° 32' 30" E	100.00	100.00
55-56	S 89° 32' 30" E	100.00	100.00
56-57	S 89° 32' 30" E	100.00	100.00
57-58	S 89° 32' 30" E	100.00	100.00
58-59	S 89° 32' 30" E	100.00	100.00
59-60	S 89° 32' 30" E	100.00	100.00
60-61	S 89° 32' 30" E	100.00	100.00
61-62	S 89° 32' 30" E	100.00	100.00
62-63	S 89° 32' 30" E	100.00	100.00
63-64	S 89° 32' 30" E	100.00	100.00
64-65	S 89° 32' 30" E	100.00	100.00
65-66	S 89° 32' 30" E	100.00	100.00
66-67	S 89° 32' 30" E	100.00	100.00
67-68	S 89° 32' 30" E	100.00	100.00
68-69	S 89° 32' 30" E	100.00	100.00
69-70	S 89° 32' 30" E	100.00	100.00
70-71	S 89° 32' 30" E	100.00	100.00
71-72	S 89° 32' 30" E	100.00	100.00
72-73	S 89° 32' 30" E	100.00	100.00
73-74	S 89° 32' 30" E	100.00	100.00
74-75	S 89° 32' 30" E	100.00	100.00
75-76	S 89° 32' 30" E	100.00	100.00
76-77	S 89° 32' 30" E	100.00	100.00
77-78	S 89° 32' 30" E	100.00	100.00
78-79	S 89° 32' 30" E	100.00	100.00
79-80	S 89° 32' 30" E	100.00	100.00
80-81	S 89° 32' 30" E	100.00	100.00
81-82	S 89° 32' 30" E	100.00	100.00
82-83	S 89° 32' 30" E	100.00	100.00
83-84	S 89° 32' 30" E	100.00	100.00
84-85	S 89° 32' 30" E	100.00	100.00
85-86	S 89° 32' 30" E	100.00	100.00
86-87	S 89° 32' 30" E	100.00	100.00
87-88	S 89° 32' 30" E	100.00	100.00
88-89	S 89° 32' 30" E	100.00	100.00
89-90	S 89° 32' 30" E	100.00	100.00
90-91	S 89° 32' 30" E	100.00	100.00
91-92	S 89° 32' 30" E	100.00	100.00
92-93	S 89° 32' 30" E	100.00	100.00
93-94	S 89° 32' 30" E	100.00	100.00
94-95	S 89° 32' 30" E	100.00	100.00
95-96	S 89° 32' 30" E	100.00	100.00
96-97	S 89° 32' 30" E	100.00	100.00
97-98	S 89° 32' 30" E	100.00	100.00
98-99	S 89° 32' 30" E	100.00	100.00
99-100	S 89° 32' 30" E	100.00	100.00



Property Boundaries:
 U. S. A.
 Y. C. W. A.
 Private Ownership
 Project Boundary
 Transmission Lines (see note 1)

Source:
 Topography from Aerial Photographs of the Bullards Bar Project, December 1968, prepared by St. Maurice-Helmkamp-Musser, Inc., California, for International Engineering Company Inc.

Basis of Bearings:
 All bearings shown are referred to the California Coordinate System, Grid Zone II.

All distances shown are grid distances as defined by the California Coordinate System, Grid Zone II. They may be converted to actual ground distances by adding 0.016 foot per 10000 feet in all distances.

THE SURVEY WAS PERFORMED UNDER SUPERVISION OF THE UNDERSIGNED BY ST. MAURICE-HELMKAMP-MUSSER, MARTISVILLE, CALIFORNIA, FOR INTERNATIONAL ENGINEERING COMPANY, INC. ENGINEERS FOR YUBA COUNTY WATER AGENCY, THE LICENSEE.
 DATE: Jan. 1970
 LICENSED LAND SURVEYOR 2682
 ST. MAURICE-HELMKAMP-MUSSER

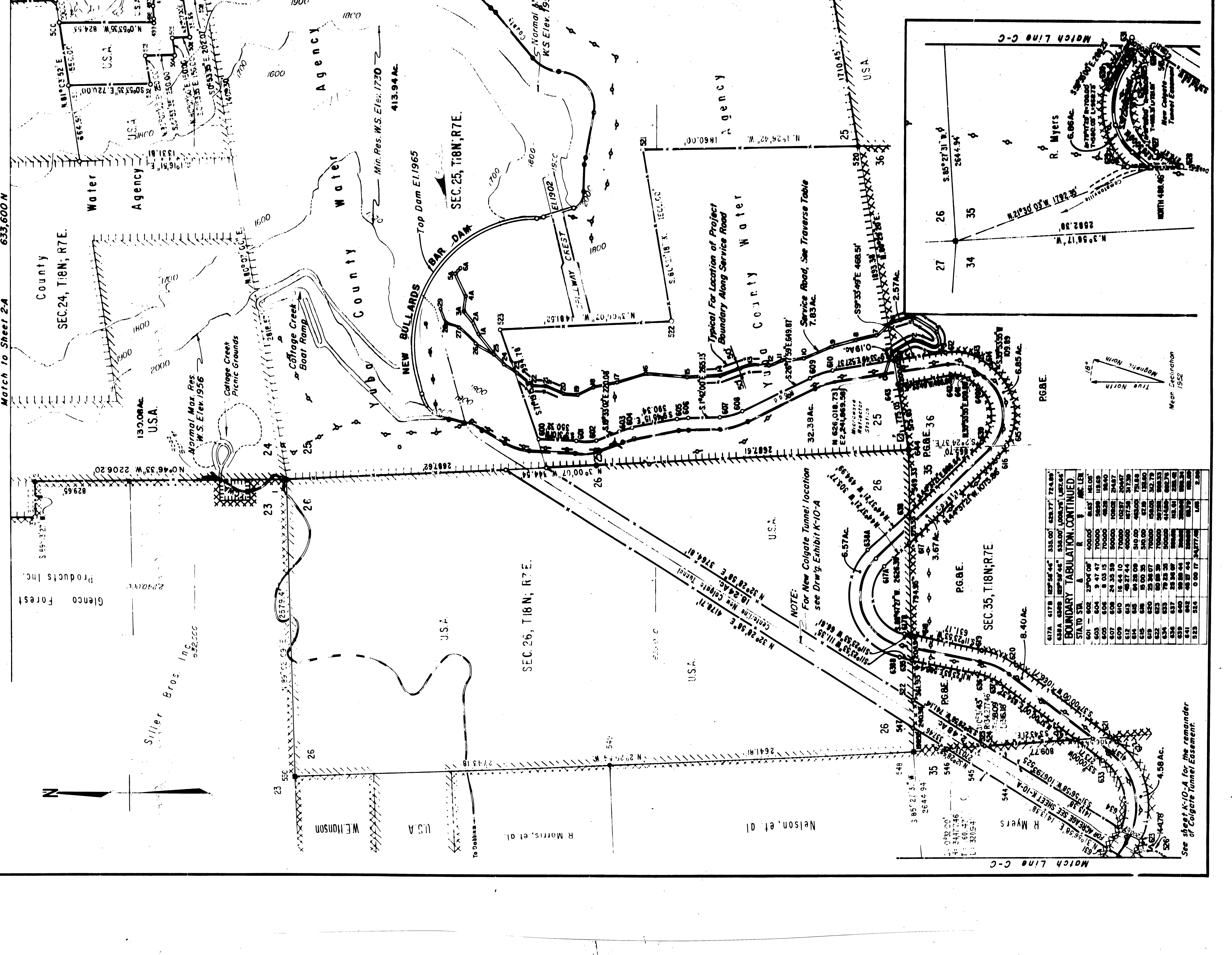
All elevations refer to U.S.C.S. Datum and originated from U.S.C.S.S. Standard Brass Cap No. K-515, Elevation 2233.427.

This bearing is part of Exhibit K-1A, Project Number 2246, submitted by the undersigned on 22nd day of December, 1970
 YUBA COUNTY WATER AGENCY
 By *Freddie J. Sander*
 Chairman, Board of Directors
 Attest: *Freddie J. Sander*
 Secretary

INTERNATIONAL ENGINEERING COMPANY, INC.
 SAN FRANCISCO, CALIFORNIA
 APPROVED: *Freddie J. Sander*
 REGISTERED LAND SURVEYOR
 NO. 10747

YUBA COUNTY WATER AGENCY
 YUBA RIVER DEVELOPMENT
EXHIBIT K-1A
 REVISED - 1970
 NEW BULLARDS BAR PROJECT
 RESERVOIR MAP
 AND
 PROJECT AND PROPERTY BOUNDARIES

Revised - Per Ltr dtd
 Oct 6, 1977



TRAVERSE TABLE

POINT TO POINT	BEARING	DIST.
1-2	S 89° 32' 30" E	100.00
2-3	S 89° 32' 30" E	100.00
3-4	S 89° 32' 30" E	100.00
4-5	S 89° 32' 30" E	100.00
5-6	S 89° 32' 30" E	100.00
6-7	S 89° 32' 30" E	100.00
7-8	S 89° 32' 30" E	100.00
8-9	S 89° 32' 30" E	100.00
9-10	S 89° 32' 30" E	100.00
10-11	S 89° 32' 30" E	100.00
11-12	S 89° 32' 30" E	100.00
12-13	S 89° 32' 30" E	100.00
13-14	S 89° 32' 30" E	100.00
14-15	S 89° 32' 30" E	100.00
15-16	S 89° 32' 30" E	100.00
16-17	S 89° 32' 30" E	100.00
17-18	S 89° 32' 30" E	100.00
18-19	S 89° 32' 30" E	100.00
19-20	S 89° 32' 30" E	100.00
20-21	S 89° 32' 30" E	100.00
21-22	S 89° 32' 30" E	100.00
22-23	S 89° 32' 30" E	100.00
23-24	S 89° 32' 30" E	100.00
24-25	S 89° 32' 30" E	100.00
25-26	S 89° 32' 30" E	100.00
26-27	S 89° 32' 30" E	100.00
27-28	S 89° 32' 30" E	100.00
28-29	S 89° 32' 30" E	100.00
29-30	S 89° 32' 30" E	100.00
30-31	S 89° 32' 30" E	100.00
31-32	S 89° 32' 30" E	100.00
32-33	S 89° 32' 30" E	100.00
33-34	S 89° 32' 30" E	100.00
34-35	S 89° 32' 30" E	100.00
35-36	S 89° 32' 30" E	100.00
36-37	S 89° 32' 30" E	100.00
37-38	S 89° 32' 30" E	100.00
38-39	S 89° 32' 30" E	100.00
39-40	S 89° 32' 30" E	100.00
40-41	S 89° 32' 30" E	100.00
41-42	S 89° 32' 30" E	100.00
42-43	S 89° 32' 30" E	100.00
43-44	S 89° 32' 30" E	100.00
44-45	S 89° 32' 30" E	100.00
45-46	S 89° 32' 30" E	100.00
46-47	S 89° 32' 30" E	100.00
47-48	S 89° 32' 30" E	100.00
48-49	S 89° 32' 30" E	100.00
49-50	S 89° 32' 30" E	100.00
50-51	S 89° 32' 30" E	100.00
51-52	S 89° 32' 30" E	100.00
52-53	S 89° 32' 30" E	100.00
53-54	S 89° 32' 30" E	100.00
54-55	S 89° 32' 30" E	100.00
55-56	S 89° 32' 30" E	100.00
56-57	S 89° 32' 30" E	100.00
57-58	S 89° 32' 30" E	100.00
58-59	S 89° 32' 30" E	100.00
59-60	S 89° 32' 30" E	100.00
60-61	S 89° 32' 30" E	100.00
61-62	S 89° 32' 30" E	100.00
62-63	S 89° 32' 30" E	100.00
63-64	S 89° 32' 30" E	100.00
64-65	S 89° 32' 30" E	100.00
65-66	S 89° 32' 30" E	100.00
66-67	S 89° 32' 30" E	100.00
67-68	S 89° 32' 30" E	100.00
68-69	S 89° 32' 30" E	100.00
69-70	S 89° 32' 30" E	100.00
70-71	S 89° 32' 30" E	100.00
71-72	S 89° 32' 30" E	100.00
72-73	S 89° 32' 30" E	100.00
73-74	S 89° 32' 30" E	100.00
74-75	S 89° 32' 30" E	100.00
75-76	S 89° 32' 30" E	100.00
76-77	S 89° 32' 30" E	100.00
77-78	S 89° 32' 30" E	100.00
78-79	S 89° 32' 30" E	100.00
79-80	S 89° 32' 30" E	100.00
80-81	S 89° 32' 30" E	100.00
81-82	S 89° 32' 30" E	100.00
82-83	S 89° 32' 30" E	100.00
83-84	S 89° 32' 30" E	100.00
84-85	S 89° 32' 30" E	100.00
85-86	S 89° 32' 30" E	100.00
86-87	S 89° 32' 30" E	100.00
87-88	S 89° 32' 30" E	100.00
88-89	S 89° 32' 30" E	100.00
89-90	S 89° 32' 30" E	100.00
90-91	S 89° 32' 30" E	100.00
91-92	S 89° 32' 30" E	100.00
92-93	S 89° 32' 30" E	100.00
93-94	S 89° 32' 30" E	100.00
94-95	S 89° 32' 30" E	100.00
95-96	S 89° 32' 30" E	100.00
96-97	S 89° 32' 30" E	100.00
97-98	S 89° 32' 30" E	100.00
98-99	S 89° 32' 30" E	100.00
99-100	S 89° 32' 30" E	100.00

BOUNDARY TABULATION (CONTINUED)

STA TO STA	BEARING	DIST.	AREA
1-2	S 89° 32' 30" E	100.00	100.00
2-3	S 89° 32' 30" E	100.00	100.00
3-4	S 89° 32' 30" E	100.00	100.00
4-5	S 89° 32' 30" E	100.00	100.00
5-6	S 89° 32' 30" E	100.00	100.00
6-7	S 89° 32' 30" E	100.00	100.00
7-8	S 89° 32' 30" E	100.00	100.00
8-9	S 89° 32' 30" E	100.00	100.00
9-10	S 89° 32' 30" E	100.00	100.00
10-11	S 89° 32' 30" E	100.00	100.00
11-12	S 89° 32' 30" E	100.00	100.00
12-13	S 89° 32' 30" E	100.00	100.00
13-14	S 89° 32' 30" E	100.00	100.00
14-15	S 89° 32' 30" E	100.00	100.00
15-16	S 89° 32' 30" E	100.00	100.00
16-17	S 89° 32' 30" E	100.00	100.00
17-18	S 89° 32'		