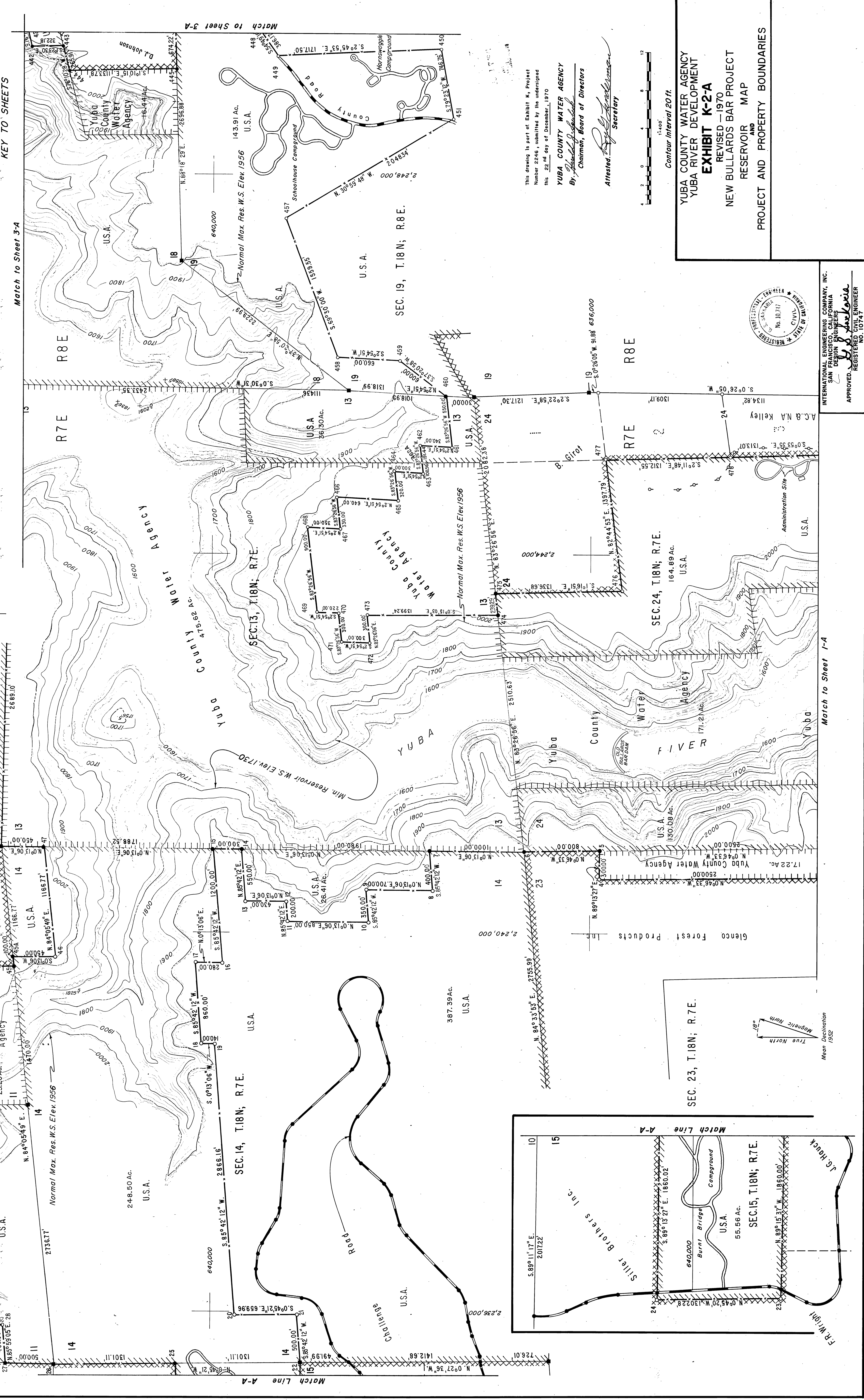


THE SURVEY WAS PERFORMED UNDER SUPERVISION OF THE UNDERSIGNED BY ST. MAURICE-HELMKAMP-MUSSER, MARIPASVILLE, CALIFORNIA, FOR INTERNATIONAL ENGINEERING COMPANY, INC., ENGINEERS FOR YUBA COUNTY WATER AGENCY, THE LICENSEE.
DATE: Jan. 1970

ST. MAURICE-HELMKAMP-MUSSER
LICENSED LAND SURVEYOR #2632

NOTE:
For Legend and Topography Source, See Exhibit K-1-A.



Match to Sheet 3-A

Match to Sheet 1-A

Match to Sheet 3-A

Match to Sheet 3-A

Match to Sheet 3-A

DRAWING NUMBER
K-2-A

DRAWING NUMBER
K-2-A

DRAWING NUMBER
K-2-A

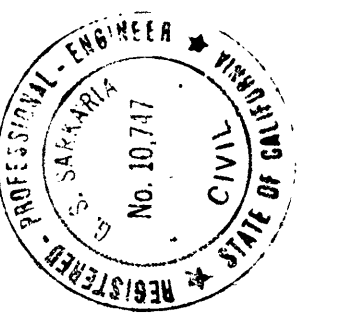
DRAWING NUMBER
K-2-A

This drawing is part of Exhibit K, Project Number 2246, submitted by its undersigned this 25th day of December, 1970.
YUBA COUNTY WATER AGENCY
By: *[Signature]*
Chairman, Board of Directors

Attested: *[Signature]*
Secretary



YUBA COUNTY WATER AGENCY
YUBA RIVER DEVELOPMENT
EXHIBIT K-2-A
REVISED - 1970
NEW BULLARDS BAR PROJECT
RESERVOIR AND MAP
PROJECT AND PROPERTY BOUNDARIES



INTERNATIONAL ENGINEERING COMPANY, INC.
SAN FRANCISCO, CALIFORNIA
REGISTERED PROFESSIONAL ENGINEERS
APPROVED: *[Signature]*
REGISTERED PROFESSIONAL ENGINEER
NO. 10747