

This drawing is part of Exhibit K, Project Number 2244, submitted by the undersigned this 22nd day of December, 1970

YUBA COUNTY WATER AGENCY
By *Harold L. ...*
Chairman, Board of Directors

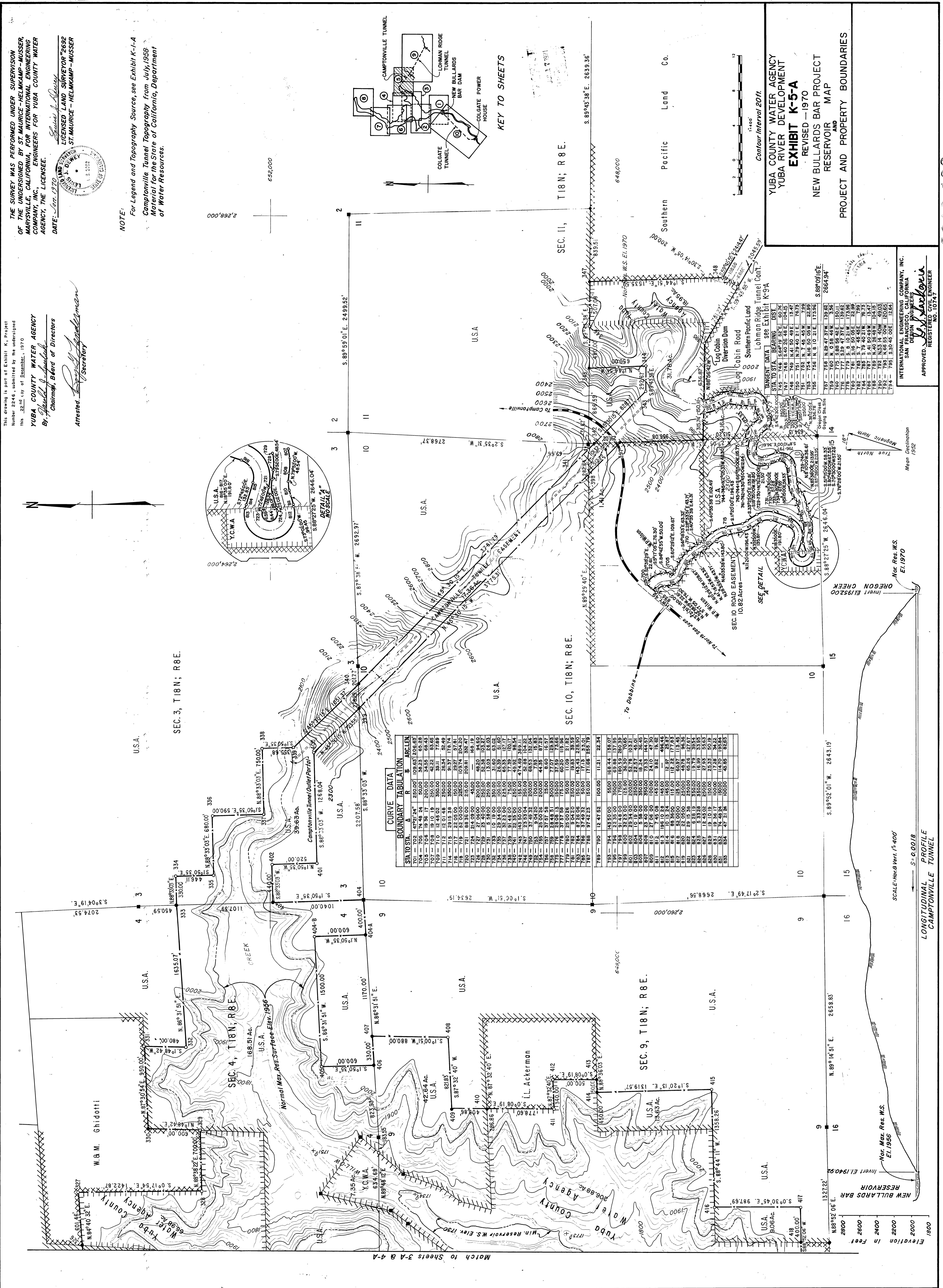
Attested: *Deputy ...*
Secretary

THE SURVEY WAS PERFORMED UNDER SUPERVISION OF THE UNDERSIGNED BY ST. MAURICE-HELMKAMP-MUSSER, MARYSVILLE, CALIFORNIA, FOR INTERNATIONAL ENGINEERING COMPANY, INC., ENGINEERS FOR YUBA COUNTY WATER AGENCY, THE LICENSEE.

DATE: Oct. 1970

ST. MAURICE-HELMKAMP-MUSSER
LICENSED LAND SURVEYOR #2692

NOTE:
For Legend and Topography Source, see Exhibit K-1-A
Camptonville Tunnel Topography from July, 1959
Material for the State of California, Department of Water Resources.



STA TO STA.	ANGLE	ARC LENGTH
701 - 702	97°21'24"	250.00
702 - 703	94°48'24"	250.00
703 - 704	93°08'36"	250.00
704 - 705	91°30'00"	250.00
705 - 706	89°52'24"	250.00
706 - 707	88°15'00"	250.00
707 - 708	86°37'24"	250.00
708 - 709	84°59'36"	250.00
709 - 710	83°21'12"	250.00
710 - 711	81°42'48"	250.00
711 - 712	80°04'24"	250.00
712 - 713	78°26'00"	250.00
713 - 714	76°47'36"	250.00
714 - 715	75°09'12"	250.00
715 - 716	73°30'48"	250.00
716 - 717	71°52'24"	250.00
717 - 718	70°14'00"	250.00
718 - 719	68°35'36"	250.00
719 - 720	66°57'12"	250.00
720 - 721	65°18'48"	250.00
721 - 722	63°40'24"	250.00
722 - 723	62°02'00"	250.00
723 - 724	60°23'36"	250.00
724 - 725	58°45'12"	250.00
725 - 726	57°06'48"	250.00
726 - 727	55°28'24"	250.00
727 - 728	53°50'00"	250.00
728 - 729	52°11'36"	250.00
729 - 730	50°33'12"	250.00
730 - 731	48°54'48"	250.00
731 - 732	47°16'24"	250.00
732 - 733	45°38'00"	250.00
733 - 734	43°59'36"	250.00
734 - 735	42°21'12"	250.00
735 - 736	40°42'48"	250.00
736 - 737	39°04'24"	250.00
737 - 738	37°26'00"	250.00
738 - 739	35°47'36"	250.00
739 - 740	34°09'12"	250.00
740 - 741	32°30'48"	250.00
741 - 742	30°52'24"	250.00
742 - 743	29°14'00"	250.00
743 - 744	27°35'36"	250.00
744 - 745	25°57'12"	250.00
745 - 746	24°18'48"	250.00
746 - 747	22°40'24"	250.00
747 - 748	21°02'00"	250.00
748 - 749	19°23'36"	250.00
749 - 750	17°45'12"	250.00
750 - 751	16°06'48"	250.00
751 - 752	14°28'24"	250.00
752 - 753	12°50'00"	250.00
753 - 754	11°11'36"	250.00
754 - 755	9°33'12"	250.00
755 - 756	7°54'48"	250.00
756 - 757	6°16'24"	250.00
757 - 758	4°38'00"	250.00
758 - 759	3°00'00"	250.00
759 - 760	1°21'36"	250.00
760 - 761	0°00'00"	250.00
761 - 762	1°21'36"	250.00
762 - 763	3°00'00"	250.00
763 - 764	4°38'00"	250.00
764 - 765	6°16'24"	250.00
765 - 766	7°54'48"	250.00
766 - 767	9°33'12"	250.00
767 - 768	11°11'36"	250.00
768 - 769	12°50'00"	250.00
769 - 770	14°28'24"	250.00
770 - 771	16°06'48"	250.00
771 - 772	17°45'12"	250.00
772 - 773	19°23'36"	250.00
773 - 774	21°02'00"	250.00
774 - 775	22°40'24"	250.00
775 - 776	24°18'48"	250.00
776 - 777	25°57'12"	250.00
777 - 778	27°35'36"	250.00
778 - 779	29°14'00"	250.00
779 - 780	30°52'24"	250.00
780 - 781	32°30'48"	250.00
781 - 782	34°09'12"	250.00
782 - 783	35°47'36"	250.00
783 - 784	37°26'00"	250.00
784 - 785	39°04'24"	250.00
785 - 786	40°42'48"	250.00
786 - 787	42°21'12"	250.00
787 - 788	43°59'36"	250.00
788 - 789	45°38'00"	250.00
789 - 790	47°16'24"	250.00
790 - 791	48°54'48"	250.00
791 - 792	50°33'12"	250.00
792 - 793	52°11'36"	250.00
793 - 794	53°50'00"	250.00
794 - 795	55°28'24"	250.00
795 - 796	57°06'48"	250.00
796 - 797	58°45'12"	250.00
797 - 798	60°23'36"	250.00
798 - 799	62°02'00"	250.00
799 - 800	63°40'24"	250.00

YUBA COUNTY WATER AGENCY
YUBA RIVER DEVELOPMENT
EXHIBIT K-5-A
REVISED - 1970
NEW BULLARDS BAR PROJECT
RESERVOIR MAP
PROJECT AND PROPERTY BOUNDARIES

INTERNATIONAL ENGINEERING COMPANY, INC.
SAN FRANCISCO, CALIFORNIA
REGISTERED PROFESSIONAL ENGINEER
No. 107147

APPROVED:
W. J. Jackson
REGISTERED PROFESSIONAL ENGINEER
No. 107147