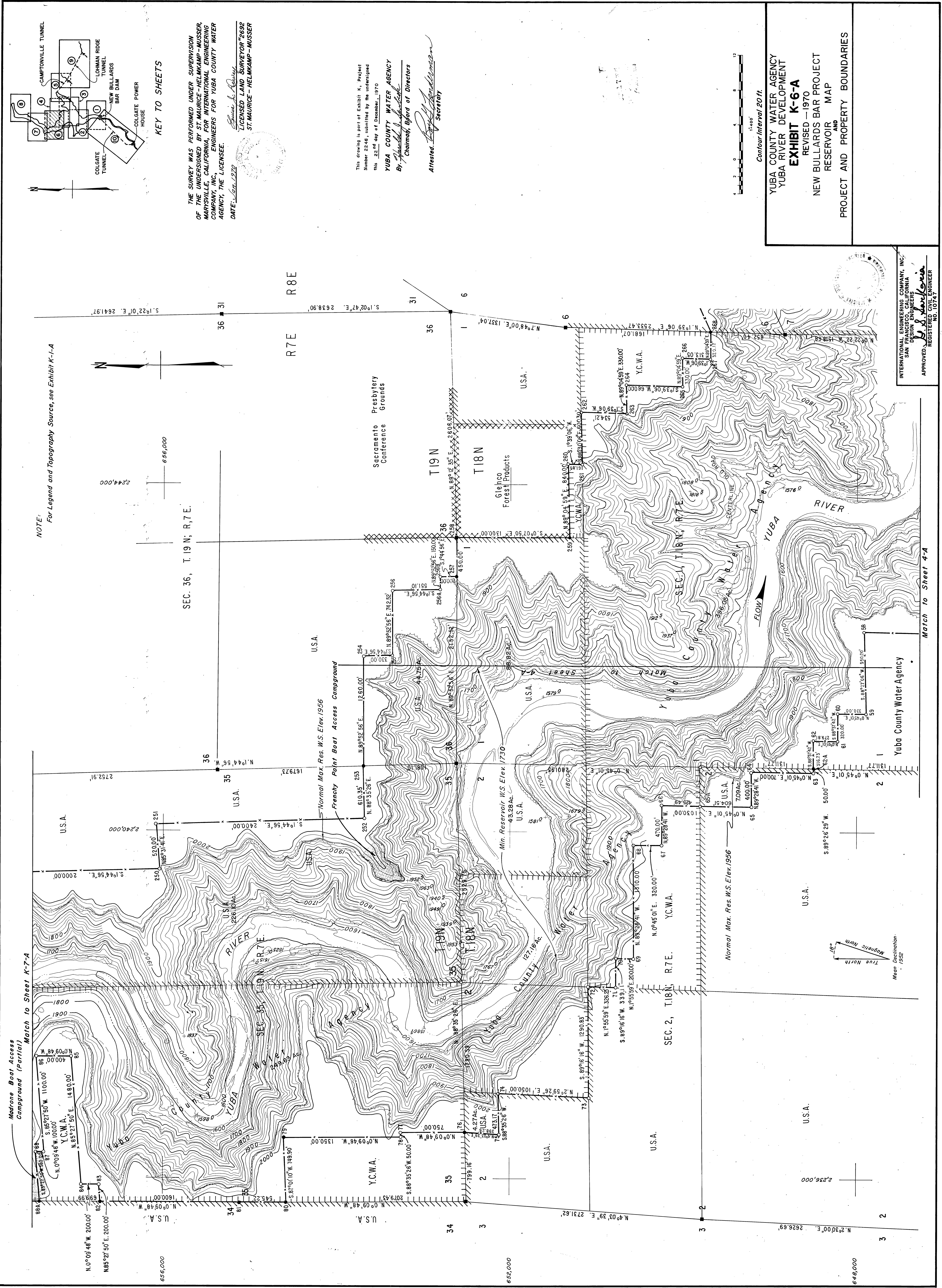


DRAWING NUMBER
K-6-A

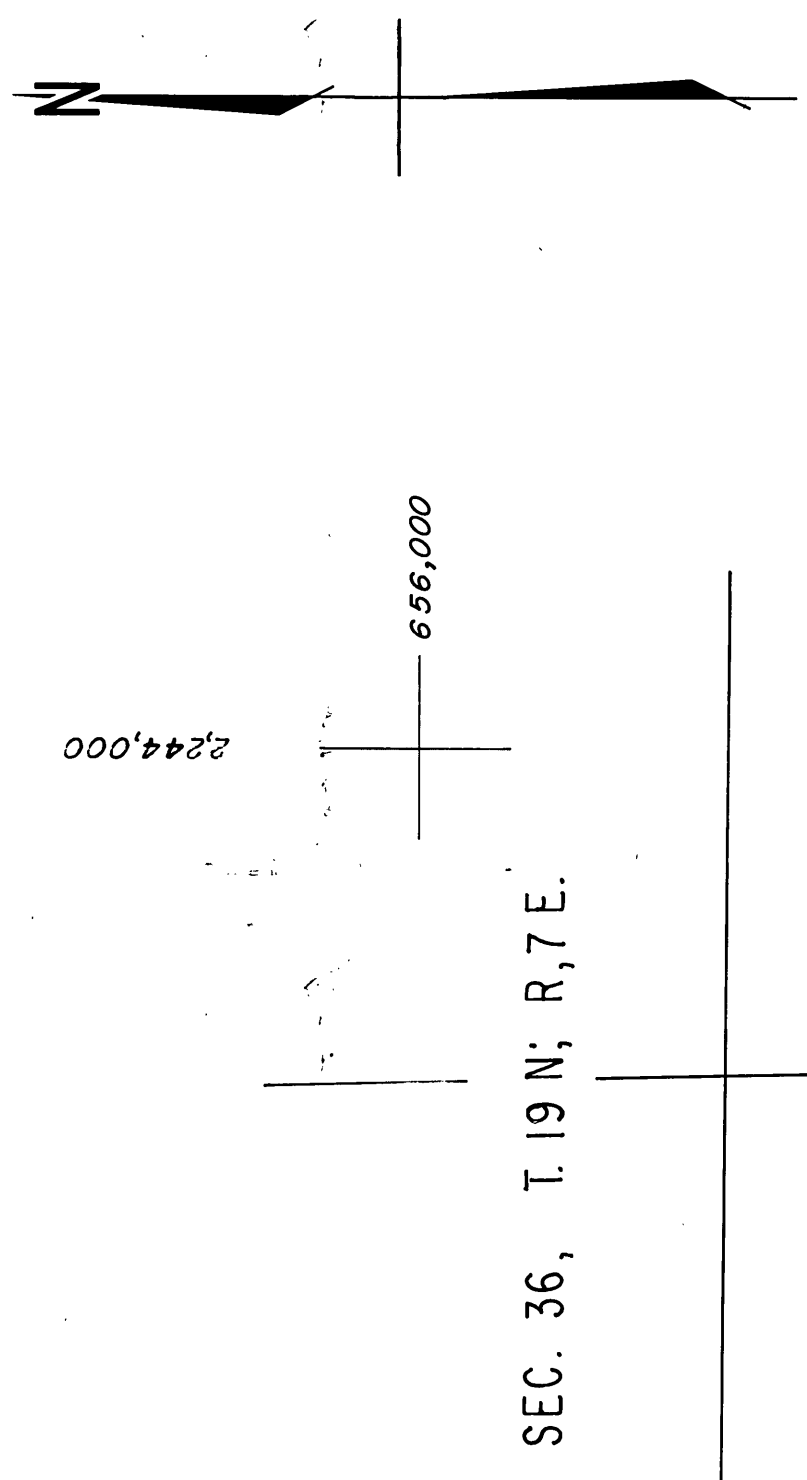
DRAWING NUMBER

DRAWING NUMBER

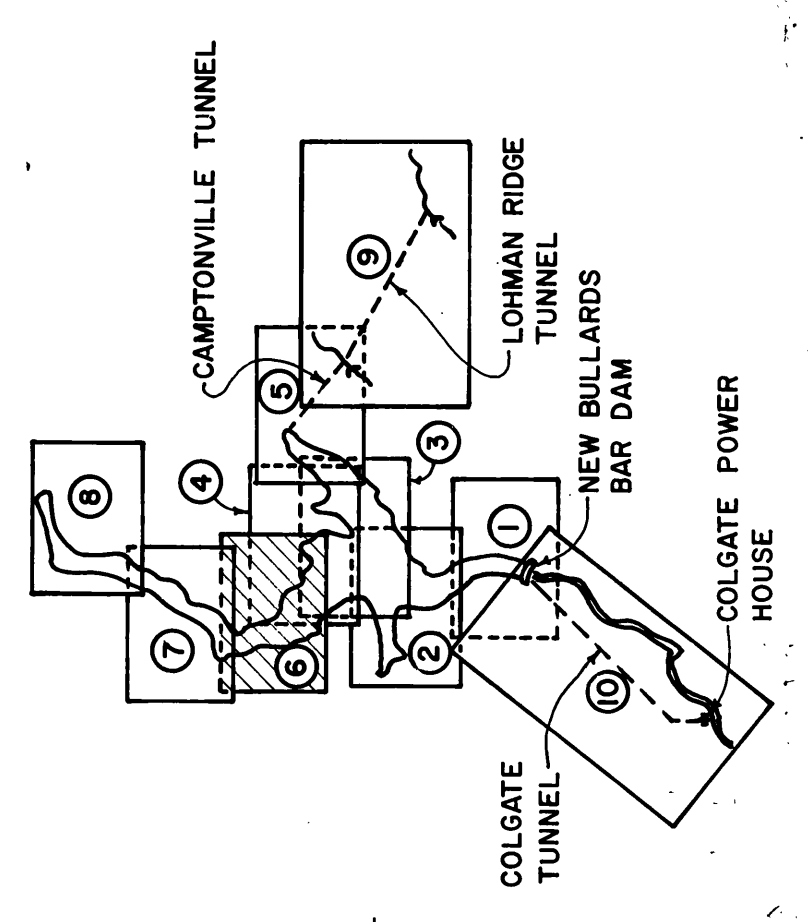
DRAWING NUMBER
K-6-A



NOTE: For Legend and Topography Source, see Exhibit K-1-A



KEY TO SHEETS



THE SURVEY WAS PERFORMED UNDER SUPERVISION OF THE UNDERSIGNED BY ST. MAURICE-HELMKAMP-MUSSER, MARYSVILLE, CALIFORNIA, FOR INTERNATIONAL ENGINEERING COMPANY, INC., ENGINEERS FOR YUBA COUNTY WATER AGENCY, THE LICENSEE.
 DATE: 6/11/1970
 ST. MAURICE-HELMKAMP-MUSSER
 LICENSED LAND SURVEYOR #2692

This drawing is part of Exhibit K, Project Number 2246, submitted by the undersigned this 23rd day of December, 1970.
 YUBA COUNTY WATER AGENCY
 By: *[Signature]*
 Chairman, Board of Directors
 Attested: *[Signature]*
 Secretary

YUBA COUNTY WATER AGENCY
 YUBA RIVER DEVELOPMENT
EXHIBIT K-6-A
 REVISED - 1970
 NEW BULLARDS BAR PROJECT
 RESERVOIR MAP
 AND
 PROJECT AND PROPERTY BOUNDARIES

INTERNATIONAL ENGINEERING COMPANY, INC.
 1000 CALIFORNIA STREET
 SAN FRANCISCO, CALIFORNIA
 APPROVED: *[Signature]*
 REGISTERED CIVIL ENGINEER

2246-184