

K-11-A
DRAWING NUMBER

K-11-A
DRAWING NUMBER

NOTES:
South Yuba Gaging Station located in the S 1/2, Sec 32
T11N, R9E, M.D.B. & M. 0.3 Miles downstream from
Comptonville - Nevada City road crossing.
N. 999,293.24
E. 2,263,691.02

ENGLEBRIGHT RESERVOIR
SOUTH 130.00'
WEST 197.17'
EAST 162.72'
WEST 160.00'
SOUTH 330.00'
EAST 18.863'
NEW NARROWS PROJECT
POWER PLANT
N. 573,475.00
E. 2,206,950.00
4.04 AC.
NEW NARROWS PROJECT
ACCESS ROAD
SCALE: 1"=400'

ENGLEBRIGHT DAM
SOUTH 130.00'
WEST 197.17'
EAST 162.72'
WEST 160.00'
SOUTH 330.00'
EAST 18.863'
NEW NARROWS PROJECT
POWER PLANT
N. 573,475.00
E. 2,206,950.00
4.04 AC.
NEW NARROWS PROJECT
ACCESS ROAD
SCALE: 1"=400'

ENGLEBRIGHT DAM
SOUTH 130.00'
WEST 197.17'
EAST 162.72'
WEST 160.00'
SOUTH 330.00'
EAST 18.863'
NEW NARROWS PROJECT
POWER PLANT
N. 573,475.00
E. 2,206,950.00
4.04 AC.
NEW NARROWS PROJECT
ACCESS ROAD
SCALE: 1"=400'

ENGLEBRIGHT DAM
SOUTH 130.00'
WEST 197.17'
EAST 162.72'
WEST 160.00'
SOUTH 330.00'
EAST 18.863'
NEW NARROWS PROJECT
POWER PLANT
N. 573,475.00
E. 2,206,950.00
4.04 AC.
NEW NARROWS PROJECT
ACCESS ROAD
SCALE: 1"=400'

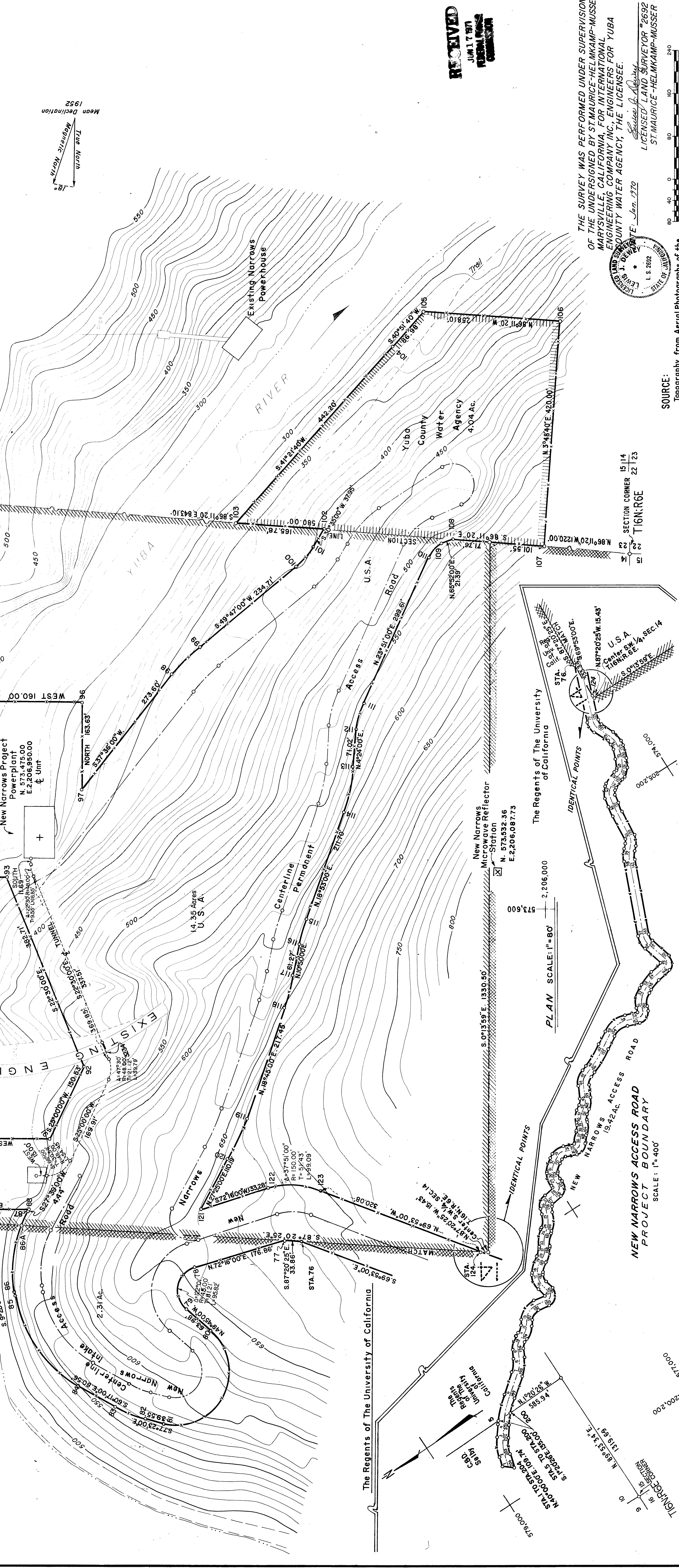
ENGLEBRIGHT DAM
SOUTH 130.00'
WEST 197.17'
EAST 162.72'
WEST 160.00'
SOUTH 330.00'
EAST 18.863'
NEW NARROWS PROJECT
POWER PLANT
N. 573,475.00
E. 2,206,950.00
4.04 AC.
NEW NARROWS PROJECT
ACCESS ROAD
SCALE: 1"=400'

ENGLEBRIGHT DAM
SOUTH 130.00'
WEST 197.17'
EAST 162.72'
WEST 160.00'
SOUTH 330.00'
EAST 18.863'
NEW NARROWS PROJECT
POWER PLANT
N. 573,475.00
E. 2,206,950.00
4.04 AC.
NEW NARROWS PROJECT
ACCESS ROAD
SCALE: 1"=400'

ENGLEBRIGHT DAM
SOUTH 130.00'
WEST 197.17'
EAST 162.72'
WEST 160.00'
SOUTH 330.00'
EAST 18.863'
NEW NARROWS PROJECT
POWER PLANT
N. 573,475.00
E. 2,206,950.00
4.04 AC.
NEW NARROWS PROJECT
ACCESS ROAD
SCALE: 1"=400'

ENGLEBRIGHT DAM
SOUTH 130.00'
WEST 197.17'
EAST 162.72'
WEST 160.00'
SOUTH 330.00'
EAST 18.863'
NEW NARROWS PROJECT
POWER PLANT
N. 573,475.00
E. 2,206,950.00
4.04 AC.
NEW NARROWS PROJECT
ACCESS ROAD
SCALE: 1"=400'

ENGLEBRIGHT DAM
SOUTH 130.00'
WEST 197.17'
EAST 162.72'
WEST 160.00'
SOUTH 330.00'
EAST 18.863'
NEW NARROWS PROJECT
POWER PLANT
N. 573,475.00
E. 2,206,950.00
4.04 AC.
NEW NARROWS PROJECT
ACCESS ROAD
SCALE: 1"=400'



STA. TO STA.	TABULATION		BOUNDARY		CONTINUED		TABULATION		CONTINUED	
	A	B	A	B	A	B	A	B	A	B
1	573.400	573.400	573.400	573.400	573.400	573.400	573.400	573.400	573.400	573.400
2	573.400	573.400	573.400	573.400	573.400	573.400	573.400	573.400	573.400	573.400
3	573.400	573.400	573.400	573.400	573.400	573.400	573.400	573.400	573.400	573.400
4	573.400	573.400	573.400	573.400	573.400	573.400	573.400	573.400	573.400	573.400
5	573.400	573.400	573.400	573.400	573.400	573.400	573.400	573.400	573.400	573.400
6	573.400	573.400	573.400	573.400	573.400	573.400	573.400	573.400	573.400	573.400
7	573.400	573.400	573.400	573.400	573.400	573.400	573.400	573.400	573.400	573.400
8	573.400	573.400	573.400	573.400	573.400	573.400	573.400	573.400	573.400	573.400
9	573.400	573.400	573.400	573.400	573.400	573.400	573.400	573.400	573.400	573.400
10	573.400	573.400	573.400	573.400	573.400	573.400	573.400	573.400	573.400	573.400
11	573.400	573.400	573.400	573.400	573.400	573.400	573.400	573.400	573.400	573.400
12	573.400	573.400	573.400	573.400	573.400	573.400	573.400	573.400	573.400	573.400
13	573.400	573.400	573.400	573.400	573.400	573.400	573.400	573.400	573.400	573.400
14	573.400	573.400	573.400	573.400	573.400	573.400	573.400	573.400	573.400	573.400
15	573.400	573.400	573.400	573.400	573.400	573.400	573.400	573.400	573.400	573.400
16	573.400	573.400	573.400	573.400	573.400	573.400	573.400	573.400	573.400	573.400
17	573.400	573.400	573.400	573.400	573.400	573.400	573.400	573.400	573.400	573.400
18	573.400	573.400	573.400	573.400	573.400	573.400	573.400	573.400	573.400	573.400
19	573.400	573.400	573.400	573.400	573.400	573.400	573.400	573.400	573.400	573.400
20	573.400	573.400	573.400	573.400	573.400	573.400	573.400	573.400	573.400	573.400
21	573.400	573.400	573.400	573.400	573.400	573.400	573.400	573.400	573.400	573.400
22	573.400	573.400	573.400	573.400	573.400	573.400	573.400	573.400	573.400	573.400
23	573.400	573.400	573.400	573.400	573.400	573.400	573.400	573.400	573.400	573.400
24	573.400	573.400	573.400	573.400	573.400	573.400	573.400	573.400	573.400	573.400
25	573.400	573.400	573.400	573.400	573.400	573.400	573.400	573.400	573.400	573.400
26	573.400	573.400	573.400	573.400	573.400	573.400	573.400	573.400	573.400	573.400
27	573.400	573.400	573.400	573.400	573.400	573.400	573.400	573.400	573.400	573.400
28	573.400	573.400	573.400	573.400	573.400	573.400	573.400	573.400	573.400	573.400
29	573.400	573.400	573.400	573.400	573.400	573.400	573.400	573.400	573.400	573.400
30	573.400	573.400	573.400	573.400	573.400	573.400	573.400	573.400	573.400	573.400
31	573.400	573.400	573.400	573.400	573.400	573.400	573.400	573.400	573.400	573.400
32	573.400	573.400	573.400	573.400	573.400	573.400	573.400	573.400	573.400	573.400
33	573.400	573.400	573.400	573.400	573.400	573.400	573.400	573.400	573.400	573.400
34	573.400	573.400	573.400	573.400	573.400	573.400	573.400	573.400	573.400	573.400
35	573.400	573.400	573.400	573.400	573.400	573.400	573.400	573.400	573.400	573.400
36	573.400	573.400	573.400	573.400	573.400	573.400	573.400	573.400	573.400	573.400
37	573.400	573.400	573.400	573.400	573.400	573.400	573.400	573.400	573.400	573.400
38	573.400	573.400	573.400	573.400	573.400	573.400	573.400	573.400	573.400	573.400
39	573.400	573.400	573.400	573.400	573.400	573.400	573.400	573.400	573.400	573.400
40	573.400	573.400	573.400	573.400	573.400	573.400	573.400	573.400	573.400	573.400
41	573.400	573.400	573.400	573.400	573.400	573.400	573.400	573.400	573.400	573.400
42	573.400	573.400	573.400	573.400	573.400	573.400	573.400	573.400	573.400	573.400
43	573.400	573.400	573.400	573.400	573.400	573.400	573.400	573.400	573.400	573.400
44	573.400	573.400	573.400	573.400	573.400	573.400	573.400	573.400	573.400	573.400
45	573.400	573.400	573.400	573.400	573.400	573.400	573.400	573.400	573.400	573.400
46	573.400	573.400	573.400	573.400	573.400	573.400	573.400	573.400	573.400	573.400
47	573.400	573.400	573.400	573.400	573.400	573.400	573.400	573.400	573.400	573.400
48	573.400	573.400	573.400	573.400	573.400	573.400	573.400	573.400	573.400	573.400
49	573.400	573.400	573.400	573.400	573.400	573.400	573.400	573.400	573.400	573.400
50	573.400	573.400	573.400	573.400	573.400	573.400	573.400	573.400	573.400	573.400
51	573.400	573.400	573.400	573.400	573.400	573.400	573.400	573.400	573.400	573.400
52	573.400	573.400	573.400	573.400	573.400	573.400	573.400	573.400	573.400	573.400
53	573.400	573.400	573.400	573.400	573.400	573.400	573.400	573.400	573.400	573.400
54	573.400	573.400	573.400	573.400	573.400	573.400	573.400	573.400	573.400	573.400
55	573.400	573.400	573.400	573.400	573.400	573.400	573.400	573.400	573.400	573.400

YUBA COUNTY WATER AGENCY
YUBA RIVER DEVELOPMENT
EXHIBIT K-II-A
REVISED - 1970

NEW NARROWS PROJECT MAP
PROJECT AND PROPERTY BOUNDARIES

THE SURVEY WAS PERFORMED UNDER SUPERVISION
OF THE UNDERSIGNED BY ST. MAURICE-HELMKAMP-MUSSER,
MARYSVILLE, CALIFORNIA, FOR INTERNATIONAL
ENGINEERING COMPANY INC., ENGINEERS FOR YUBA
COUNTY WATER AGENCY, THE LICENSEE.
L.S. 2832
ST. MAURICE-HELMKAMP-MUSSER
LICENSED LAND SURVEYOR #2632
Jan. 1970

SOURCE:
Topography from Aerial Photographs of the
Narrows Area, October, 1968, prepared by
St. Maurice-Helmkamp-Musser, Marysville,
California.

INTERNATIONAL ENGINEERING COMPANY, INC.
SAN FRANCISCO, CALIFORNIA
DESIGN ENGINEERS
APPROVED: *[Signature]*
REGISTERED PROFESSIONAL ENGINEER
NO. 10747

YUBA COUNTY WATER AGENCY
By: *[Signature]*
Chairman Board of Directors
Secretary: *[Signature]*

This drawing is part of Exhibit K, Project
Number 2246, submitted by the undersigned
this 22nd day of December, 1970

PLAN SCALE: 1"=80'
SCALE: 1"=400'

SECTION CORNER 15 | 14
T16N, R9E 22 | 23

224C-139