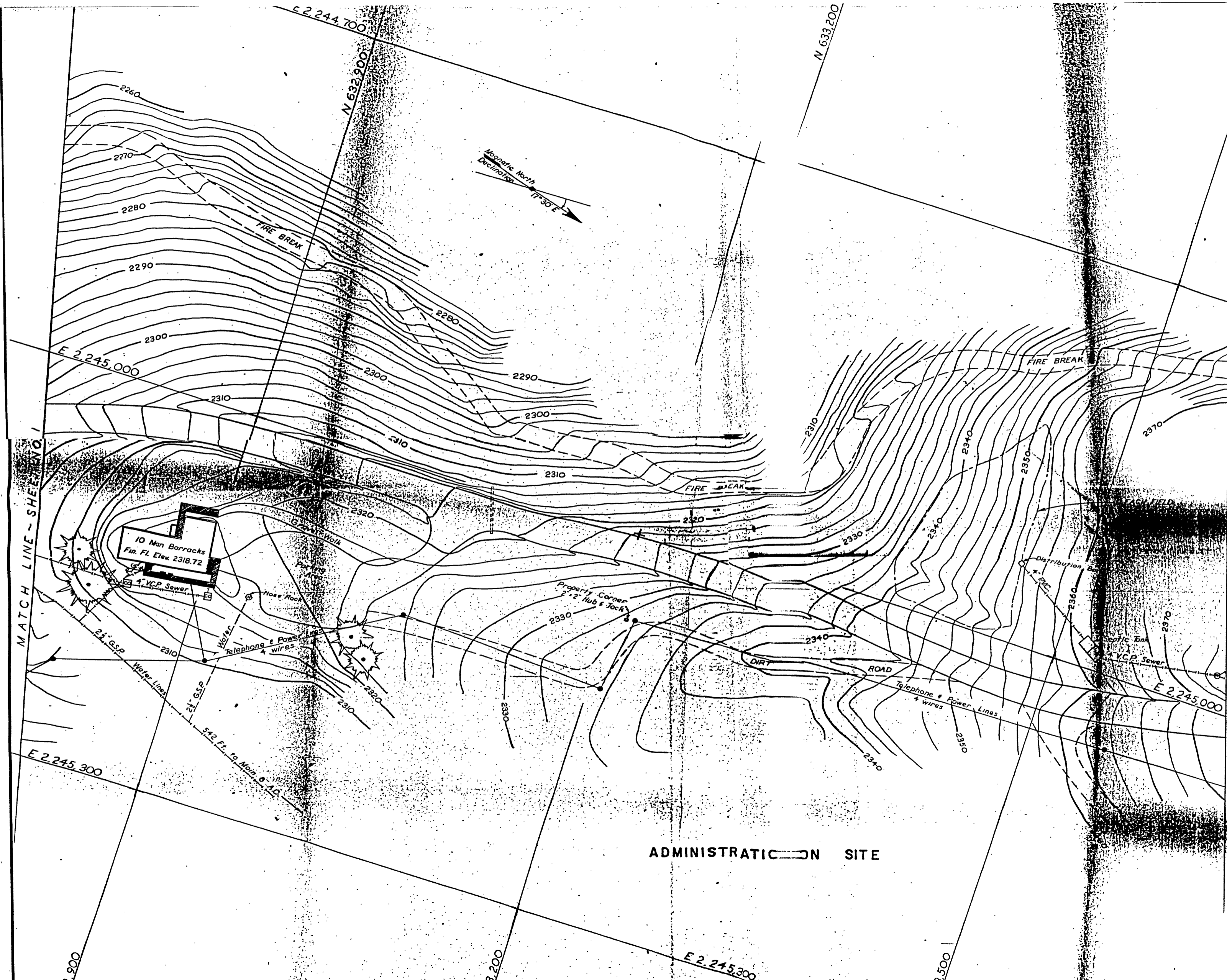


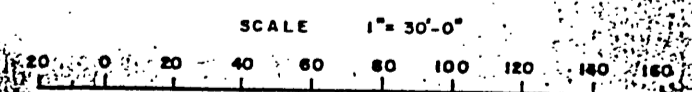
REMOVE TO EXPOSE ADHESIVE  
 REMOVE TO EXPOSE ADHESIVE  
 REMOVE TO EXPOSE ADHESIVE



MATCH LINE - SHEET NO. 3

This drawing is a part of Exhibit R, submitted by the undersigned  
 this 16 day of June, 1970

YUBA COUNTY WATER AGENCY  
 By *[Signature]*  
 Chairman, Board of Directors  
 Attested *[Signature]*  
 Secretary



ADMINISTRATIVE SITE

YUBA COUNTY WATER AGENCY  
 YUBA RIVER DEVELOPMENT  
 PROJECT NUMBER 2246  
**EXHIBIT R7 - SHEET 2 OF 3**  
**NEW BULLARDS BAR PROJECT**  
**RECREATIONAL FACILITIES**

*[Handwritten note]*  
 Adjusted to match on R-1

2246 127

INTERNATIONAL ENGINEERING CO., INC.  
 SAN FRANCISCO, CALIFORNIA  
 DESIGN ENGINEERS  
*[Signature]*