

## APPENDIX E4

# INFORMATION RELATED TO YCWA'S PROPOSED CONDITIONS

---

Appendix E4 includes for YCWA's proposed Project the following information required pursuant to 18 C.F.R. Section 5.18(b)(5)(ii)(2):

- (A) Functional design drawings of any fish passage and collection facilities or any other facilities necessary for implementation of environmental measures, indicating whether the facilities depicted are existing or proposed (these drawings must conform to the specifications of § 4.39 of this chapter regarding dimensions of full-sized prints, scale, and legibility);
- (B) A description of operation and maintenance procedures for any existing or proposed measures or facilities;
- (C) An implementation or construction schedule for any proposed measures or facilities, showing the intervals following issuance of a license when implementation of the measures or construction of the facilities would be commenced and completed;
- (D) An estimate of the costs of construction, operation, and maintenance, of any proposed facilities, and of implementation of any proposed environmental measures.
- (E) A map or drawing that conforms to the size, scale, and legibility requirements of § 4.39 of this chapter showing by the use of shading, cross-hatching, or other symbols the identity and location of any measures or facilities, and indicating whether each measure or facility is existing or proposed (the map or drawings in this exhibit may be consolidated).

## **E4.1      Functional Design Drawings**

Implementation of YCWA's proposed conditions, as provided in Appendix E2 of this Exhibit E, does not require any fish passage or fish collection facilities.

Implementation of YCWA's proposed condition AR1, *Maintain Minimum Streamflows Below Our House Diversion Dam and Log Cabin Diversion Dam*, requires YCWA to modify the existing fish release outlets at Our House and Log Cabin diversion dams. The modifications, including conceptual drawing, and construction method and schedule for the modifications are described in Section 2.2.1.2.2 of this Exhibit E. Costs for the modifications are shown in Table 4.3-2 in Section 4 of this Exhibit E.

Implementation of YCWA's proposed conditions AR11, *Periodically Close Lohman Ridge Diversion Tunnel*, requires YCWA to modify the intake gate at Lohman Ridge Diversion Tunnel.

The modification, including conceptual drawing, and construction method and schedule for the modification are described in Section 2.2.1.2.3 of this Exhibit E. Costs for the modifications are shown in Table 4.3-2 in Section 4 of this Exhibit E.

Last, implementation of YCWA’s proposed conditions RR1, *Implement Recreation Facilities Plan*, requires YCWA to modify existing recreation facilities and add new recreation facilities. The modifications and new facilities and a schedule for their implementation are included in the Recreation Facilities Plan in Appendix E3 of this Exhibit E, and are summarized in Section 2.2.1.2.4, including construction method and schedule. Costs for the modifications are shown in Table 4.3-2 in Section 4 of this Exhibit E.

See Appendix E2 of this Exhibit E for a description of whether YCWA’s proposed conditions are existing or new.

## **E4.2 Operation and Maintenance Procedures**

O&M of the modified Our House and Log Cabin diversion dams fish release valves and the new Lohman Ridge Diversion Tunnel Intake gate would occur under normal Project O&M of valves and gates. O&M of modified and new Project recreation facilities is described in the Recreation Facilities Plan in Appendix E3 of this Exhibit E.

## **E4.3 Implementation and Construction Schedule for Proposed Measures**

Contingent upon receiving the necessary permits and approvals, YCWA anticipates the modified Our House and Log Cabin diversion dams fish release outlets and new Lohman Ridge Diversion Tunnel gate would be constructed within the first 5 years of the new license. A construction schedule for modified and new Project recreation facilities is described in the Recreation Facilities Plan in Appendix E3 of this Exhibit E.

Table E4.3-1 provides a schedule for the implementation of YCWA’s proposed Conditions, as provided in Appendix E2.

**Table E4.3-1. Schedule for implementation of YCWA’s proposed Yuba River Development Project environmental conditions.**

<b>YCWA’s Proposed Condition</b>	<b>Description</b>	<b>Interval Following License Issuance when Condition Would Be Implemented and Completed</b>
<b>GENERAL</b>		
GEN1	Organize Ecological Group and Host Meetings	Implement in 1 <sup>st</sup> full calendar year after license issuance, and continue annually through license term
GEN2	Annual Review of Special-Status Species Lists and Assessment of New Species on NFS Lands	Implement in 1 <sup>st</sup> full calendar year after license issuance, and continue annually through license term

**Table E4.3-1. (continued)**

<b>YCWA's Proposed Condition</b>	<b>Description</b>	<b>Interval Following License Issuance when Condition Would Be Implemented and Completed</b>
<b>GENERAL (cont.)</b>		
GEN3	Provide Environmental Training to Employees	Implement in 1 <sup>st</sup> full calendar year after license issuance, and continue annually through license term
GEN4	Develop and Implement a Coordinated Operations Plan to Assure Licensee's Compliance with the New License for the Yuba River Development Project	Develop plan within 90 days after license issuance, and implement through license term
GEN5	Special-Status Species on NFS Lands	Implement immediately on license issuance, and continue, as needed, through license term
GEN6	Review of Improvements on NFS Lands	Implement immediately on license issuance and continue, as needed, through license term
<b>GEOLOGY AND SOILS</b>		
GS1	Implement Erosion and Sediment Control Plan	Implement immediately on license issuance, and continue, as needed, through license term
GS2	Implement Our House and Log Cabin Diversion Dams Sediment Management Plan	Implement immediately on license issuance, and continue, as needed, through license term
GS3	Implement Our House and Log Cabin Diversion Dams and New Bullards Bar Reservoir Woody Material Management Plan	Implement immediately on license issuance, and continue, as needed, through license term
<b>WATER RESOURCES</b>		
WR1	Implement Hazardous Materials Management Plan	Implement immediately on license issuance, and continue, as needed, through license term
WR2	Determine Water Year Types for Conditions Pertaining to Our House Diversion Dam, Log Cabin Diversion Dam and New Bullards Bar Dam	Implement within 90 days after license issuance, and implement through license term
WR3	Determine Water Year Types for Conditions Pertaining to Narrows 2 Powerhouse and Narrows 2 Full Bypass	Implement within 90 days after license issuance, and implement through license term
WR4	Implement Streamflow and Reservoir Level Compliance Monitoring Plan	Implement immediately on license issuance, and implement through license term
WR5	Maintain New Bullards Bar Reservoir Minimum Pool	Implement immediately on license issuance, and implement through license term
WR6	Operate New Bullards Bar Reservoir for Flood Control	Implement immediately on license issuance, and implement through license term
WR7	Implement Water Temperature Monitoring Plan	Implement in 1 <sup>st</sup> full calendar year after license issuance, and continue as described in the plan
WR8	Implement Water Quality Monitoring Plan	Implement in 1 <sup>st</sup> full calendar year after license issuance, and continue as described in the plan
WR9	Implement Drought Management Plan	Implement immediately on license issuance, and continue, as needed, through license term
<b>AQUATIC RESOURCES</b>		
AR1	Maintain Minimum Streamflows below Our House Diversion Dam, Log Cabin Diversion Dam	Implement within 90 days after license issuance, and implement through license term
AR2	Control Project Spills at Our House Diversion Dam	Implement within 90 days after license issuance, and implement, as needed, through license term

**Table E4.3-1. (continued)**

YCWA's Proposed Condition	Description	Interval Following License Issuance when Condition Would Be Implemented and Completed
<b>AQUATIC RESOURCES (cont.)</b>		
AR3	Maintain Minimum Streamflows at Narrows 2 Powerhouse and Narrows 2 Full Bypass	Implement immediately on license issuance, and implement through license term
AR4	Control Project Spills at New Bullards Bar Dam	Implement within 90 days after license issuance, and implement, as needed, through license term
AR5	Implement Aquatic Invasive Species Management Plan	Implement in 1 <sup>st</sup> full calendar year after license issuance, and continue as described in the plan
AR6	Implement New Bullards Bar Reservoir Fish Stocking Plan	Implement in 1 <sup>st</sup> full calendar year after license issuance, and continue annually through license term
AR7	Implement Upper Yuba River Aquatic Monitoring Plan	Implement in 1 <sup>st</sup> full calendar year after license issuance, and continue as described in the plan
AR8	Implement Lower Yuba River Aquatic Monitoring Plan	Implement in 1 <sup>st</sup> full calendar year after license issuance, and continue as described in the plan
AR9	Control Project Ramping and Flow Fluctuations Downstream of Englebright Dam	Implement within 90 days after license issuance, and implement, as needed, through license term
AR10	Maintain Minimum Streamflow Below New Bullards Bar Dam	Implement within 90 days after license issuance, and implement through license term
AR11	Periodically Close Lohman Ridge Diversion Tunnel	Implement within 90 days after license issuance, and implement, as needed, through license term
AR12	Control Project Spills at Log Cabin Diversion Dam	Implement within 90 days after license issuance, and implement, as needed, through license term
<b>TERRESTRIAL RESOURCES</b>		
TR1	Implement Integrated Vegetation Management Plan	Implement in 1 <sup>st</sup> full calendar year after license issuance, and continue as described in the plan
TR2	Implement Bald Eagle and American Peregrine Falcon Management Plan	Implement in 1 <sup>st</sup> full calendar year after license issuance, and continue as described in the plan
TR3	Implement Ringtail Management Plan	Implement in 1 <sup>st</sup> full calendar year after license issuance, and continue as described in the plan
TR4	Implement Bat Management Plan	Implement in 1 <sup>st</sup> full calendar year after license issuance, and continue as described in the plan
<b>RECREATIONAL RESOURCES</b>		
RR1	Implement Recreation Facilities Plan	Implement in 1 <sup>st</sup> full calendar year after license issuance, and continue as described in the plan
RR2	Provide Recreation Flow Information	Implement in 1 <sup>st</sup> full calendar year after license issuance, and continue through license term
RR3	Provide Whitewater Boating Below Our House Diversion Dam	Implement in 1 <sup>st</sup> full calendar year after license issuance, and continue as described in the plan

**Table E4.3-1. (continued)**

YCWA's Proposed Condition	Description	Interval Following License Issuance when Condition Would Be Implemented and Completed
<b>LAND USE</b>		
LU1	Implement Transportation System Management Plan	Implement immediately on license issuance, and continue as described in the plan
LU2	Implement Fire Prevention and Response Plan	Implement immediately on license issuance, and continue as described in the plan
<b>CULTURAL RESOURCES</b>		
CR1	Implement Historic Properties Management Plan	Implement immediately on license issuance, and continue as described in the plan
<b>TRIBAL INTERESTS</b>		
VR1	Implement Visual Resource Management Plan	Implement immediately on license issuance, and continue as described in the plan

## **E4.4      Estimated Costs of Environmental Measures**

Table 4.3-2 in Section 4.0 of this Exhibit E provides an estimate of the costs of construction, operation, and maintenance of YCWA's proposed conditions.

## **E4.5      Maps Showing Location of Environmental Measures**

Figure E4.3-1 shows the location of YCWA's proposed environmental and recreation conditions, with the exception of 19 conditions listed in the figure legend. Eighteen of those conditions do not pertain to a specific location, other than the area within the FERC Project Boundary. So, the specific geographic locations to which each of those conditions apply cannot be easily shown on a map. The remaining condition - CR1, *Implement Historic Properties Management Plan* – is not shown on the figure due to the Privileged nature of the information.

Page Left Blank



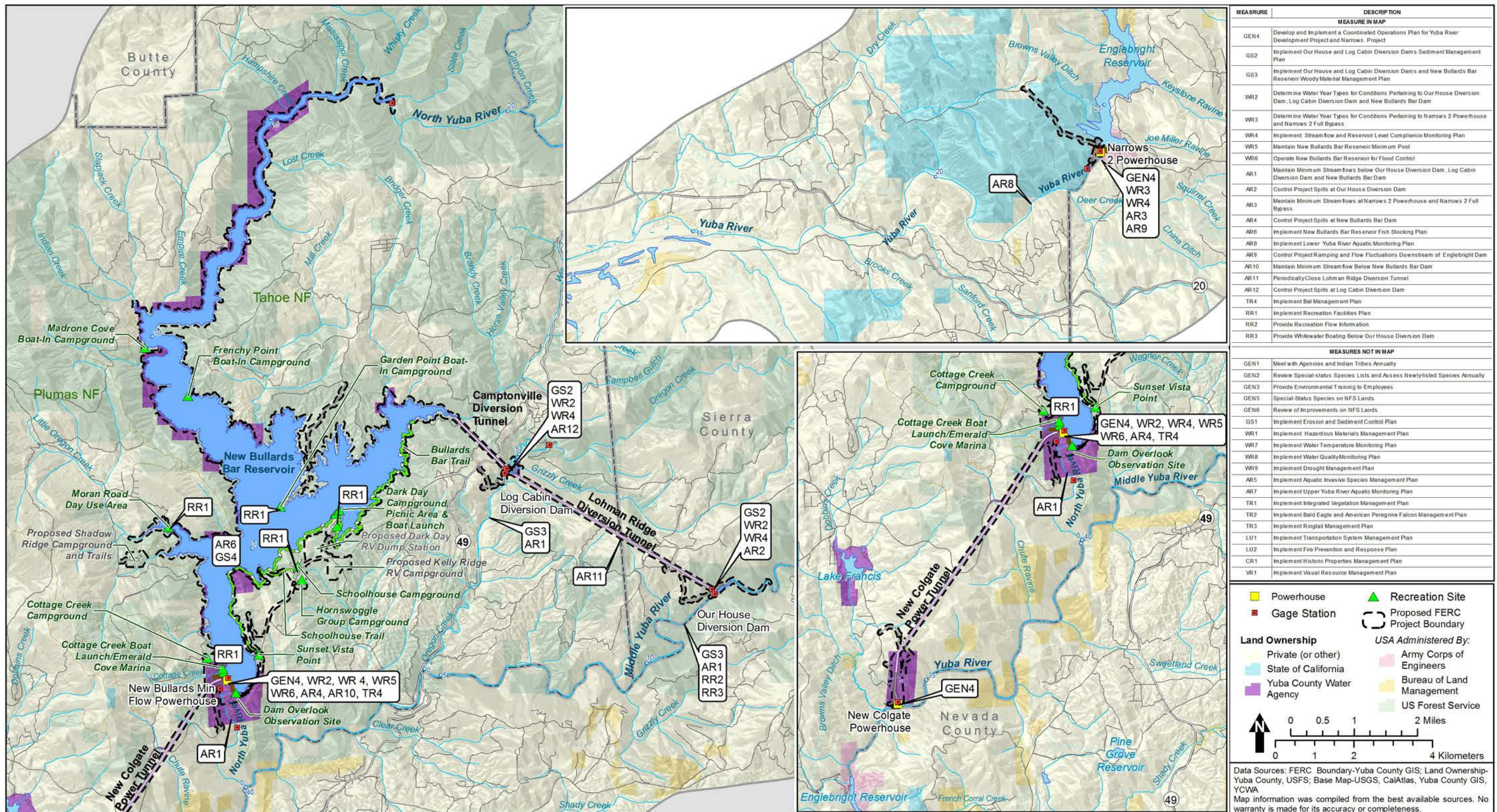


Figure E4.3-1. Map depicting the approximate locations of various environmental and recreation conditions proposed by YCWA.



Page Left Blank