

Technical Memorandum 6-2

Riparian Habitat Downstream of Englebright Dam

Attachment 6-2E

Historical Aerial Photographs of Study Sites

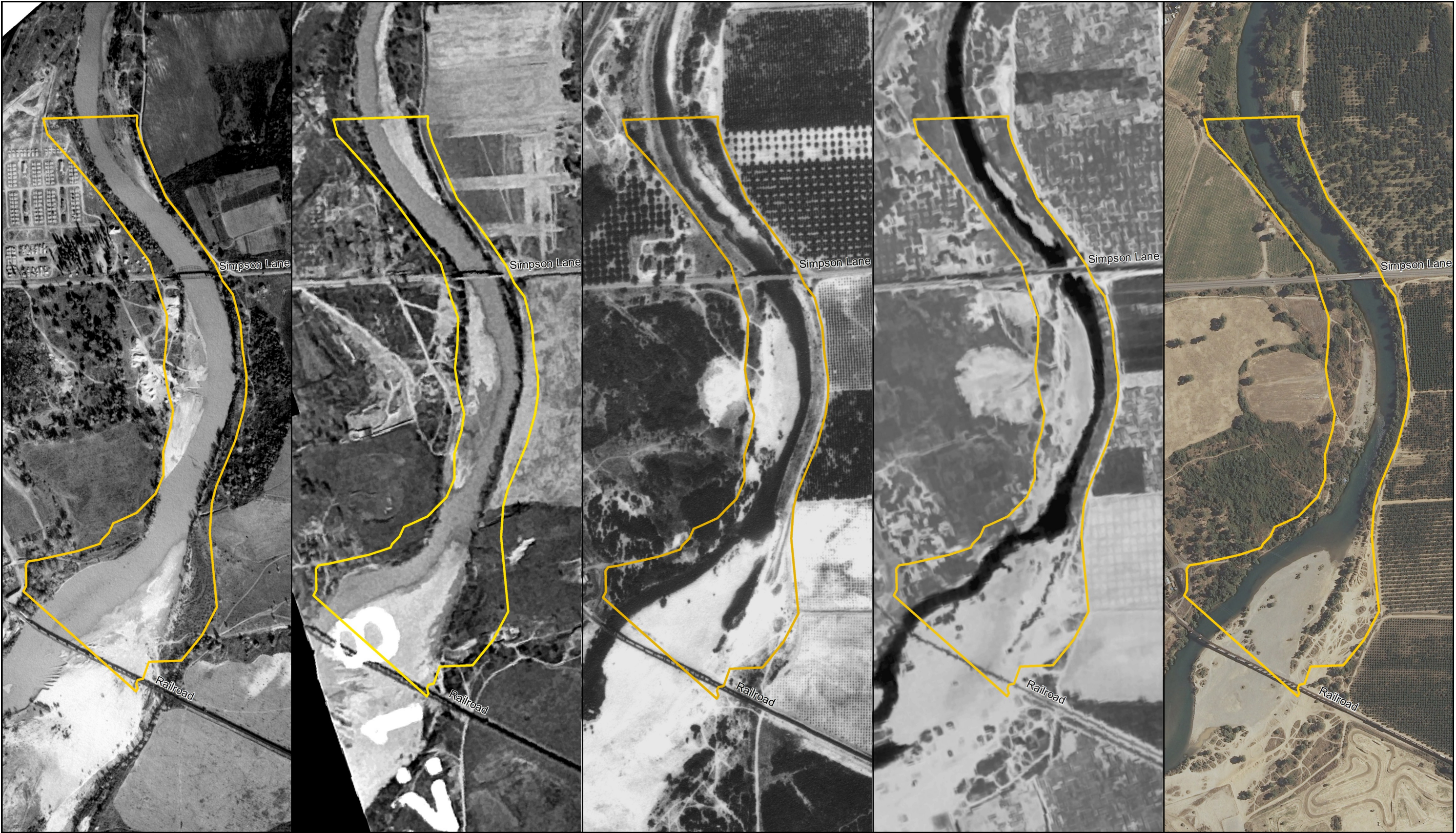
**Yuba River Development Project
FERC Project No. 2246**

June 2013

©2013, Yuba County Water Agency
All Rights Reserved

List of Figures		
Figure No.	Description	Page No.
1.	Yuba River, Marysville Study Site page 1 of 8.	E-1
2.	Yuba River, Hallwood Study Site page 2 of 8.	E-2
3.	Yuba River, Daguerre Point Dam Study Site page 3 of 8.	E-3
4.	Yuba River, Dry Creek Study Site page 4 of 8.	E-4
5.	Yuba River, Parks Bar Study Site page 5 of 8.	E-5
6.	Yuba River, Timbuctoo Bend Study Site page 6 of 8.	E-6
7.	Yuba River, Narrows Study Site page 7 of 8.	E-7
8.	Yuba River, Englebright Study Site page 8 of 8.	E-8

Page Left Blank



1937

Imagery Provided By California Department of Water Resources
Photo Not Orthorectified

February 22, 1947 (Flow 1,900 cfs)

Imagery Provided By California Department of Water Resources
Photo Not Orthorectified

July 13, 1970 (Flow 204 cfs)

Imagery Provided By California Department of Water Resources
Photo Not Orthorectified

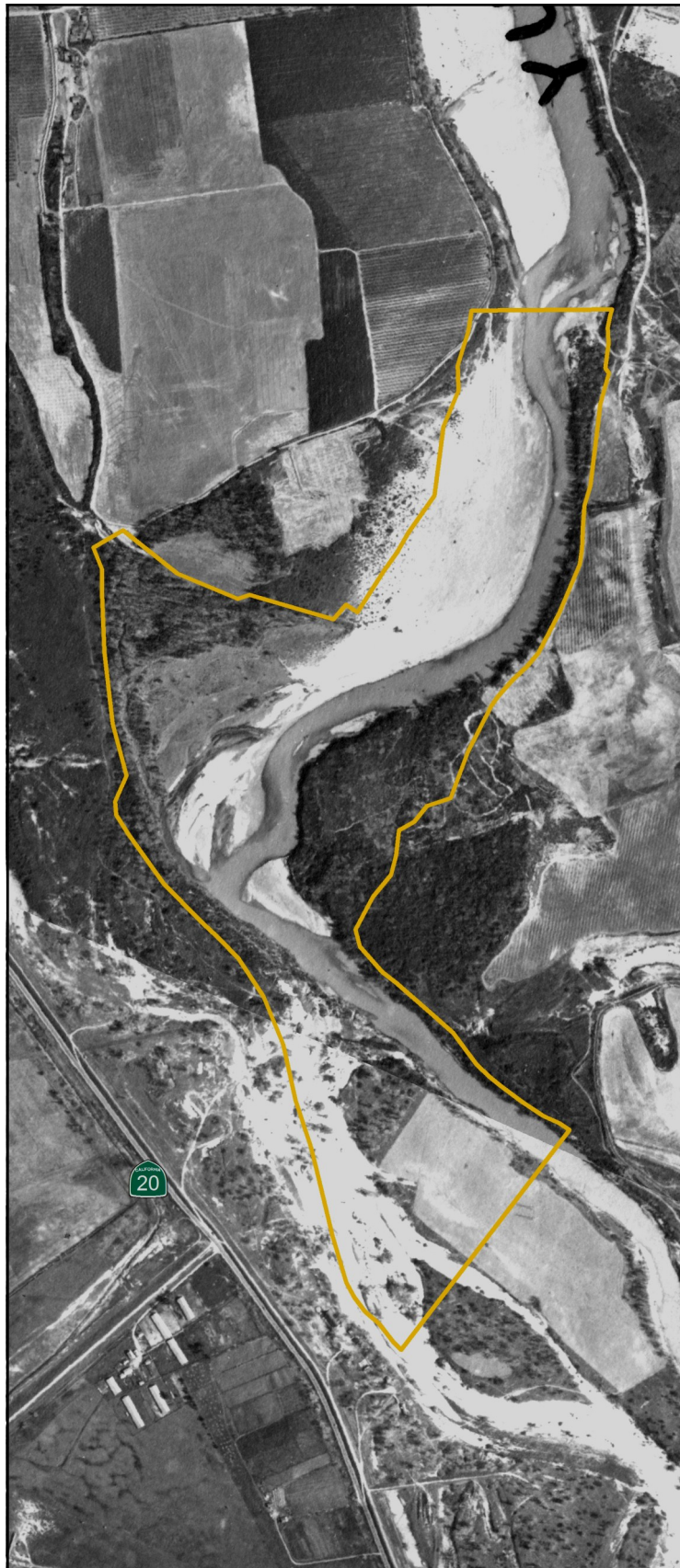
June 29, 1987 (Flow 315 cfs)

Imagery Provided By California Department of Water Resources
Photo Not Orthorectified

July 12, 2010 (Flow 2,690 cfs)

Imagery Provided By National Agricultural Imagery Program
Photo Orthorectified





February 22, 1947 (Flow 1,900 cfs)

Imagery Provided By California Department of Water Resources
Photo Not Orthorectified



July 13, 1970 (Flow 204 cfs)

Imagery Provided By California Department of Water Resources
Photo Not Orthorectified



July 14, 1987 (Flow 315 cfs)

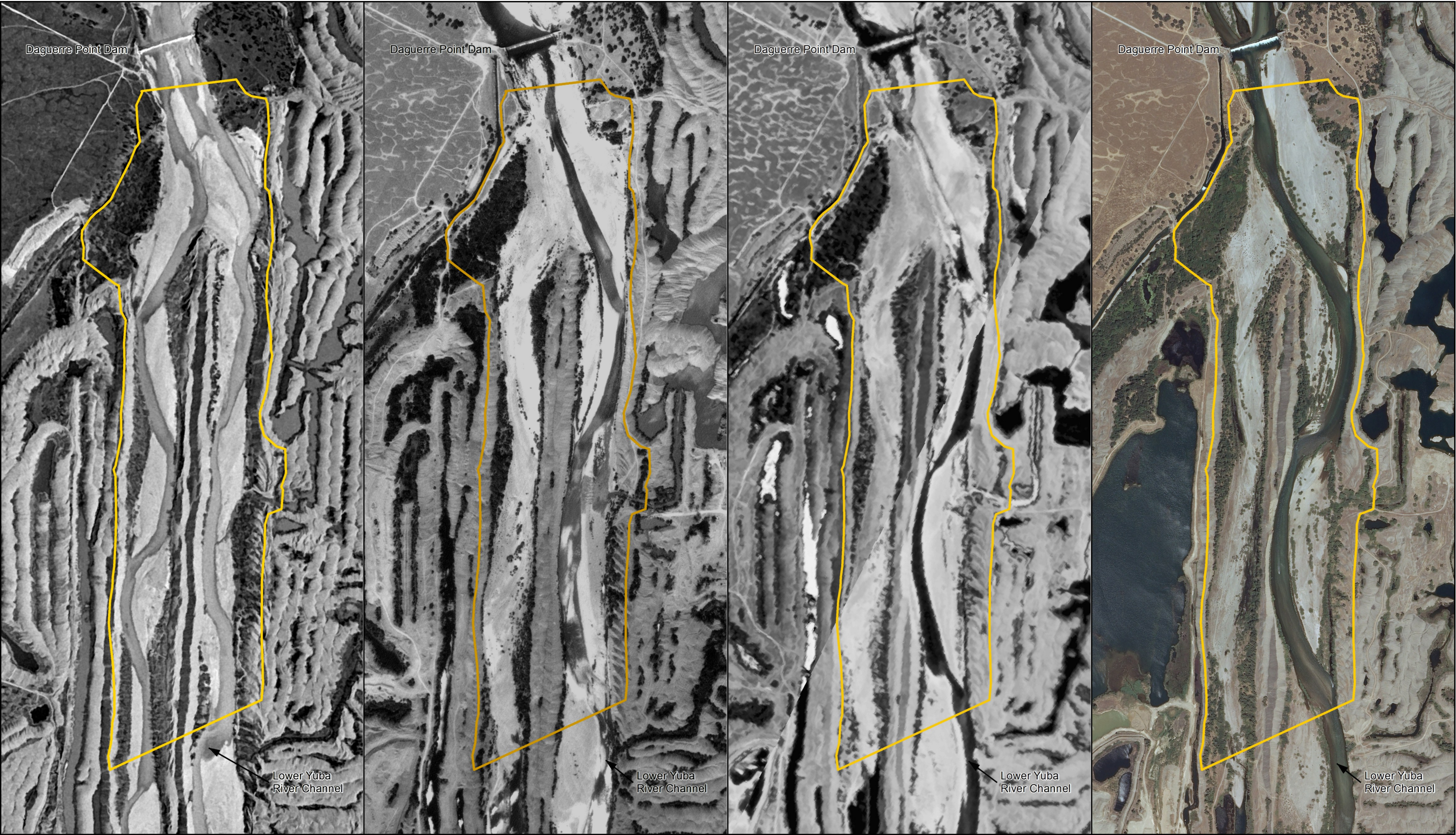
Imagery Provided By California Department of Water Resources
Photo Not Orthorectified



July 12, 2010 (Flow 2,690 cfs)

Imagery Provided By National Agricultural Imagery Program
Photo Orthorectified

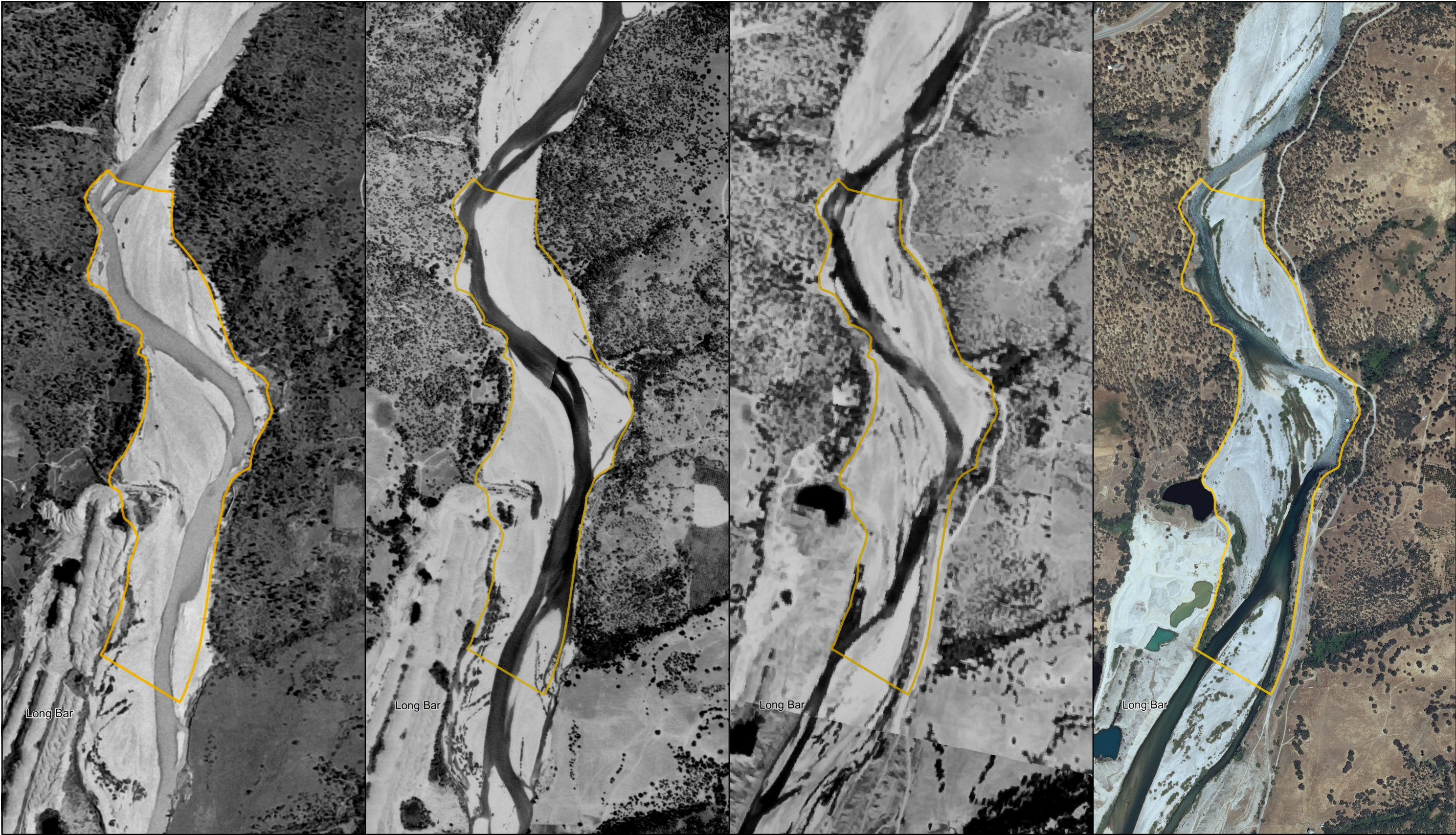




February 22, 1947 (Flow 1,900 cfs) Imagery Provided By California Department of Water Resources Photo Not Orthorectified	July 13, 1970 (Flow 204 cfs) Imagery Provided By California Department of Water Resources Photo Not Orthorectified	June 29, 1987 (Flow 315 cfs) Imagery Provided By California Department of Water Resources Photo Not Orthorectified	July 12, 2010 (Flow 2,690 cfs) Imagery Provided By National Agricultural Imagery Program Photo Orthorectified
---	---	---	--

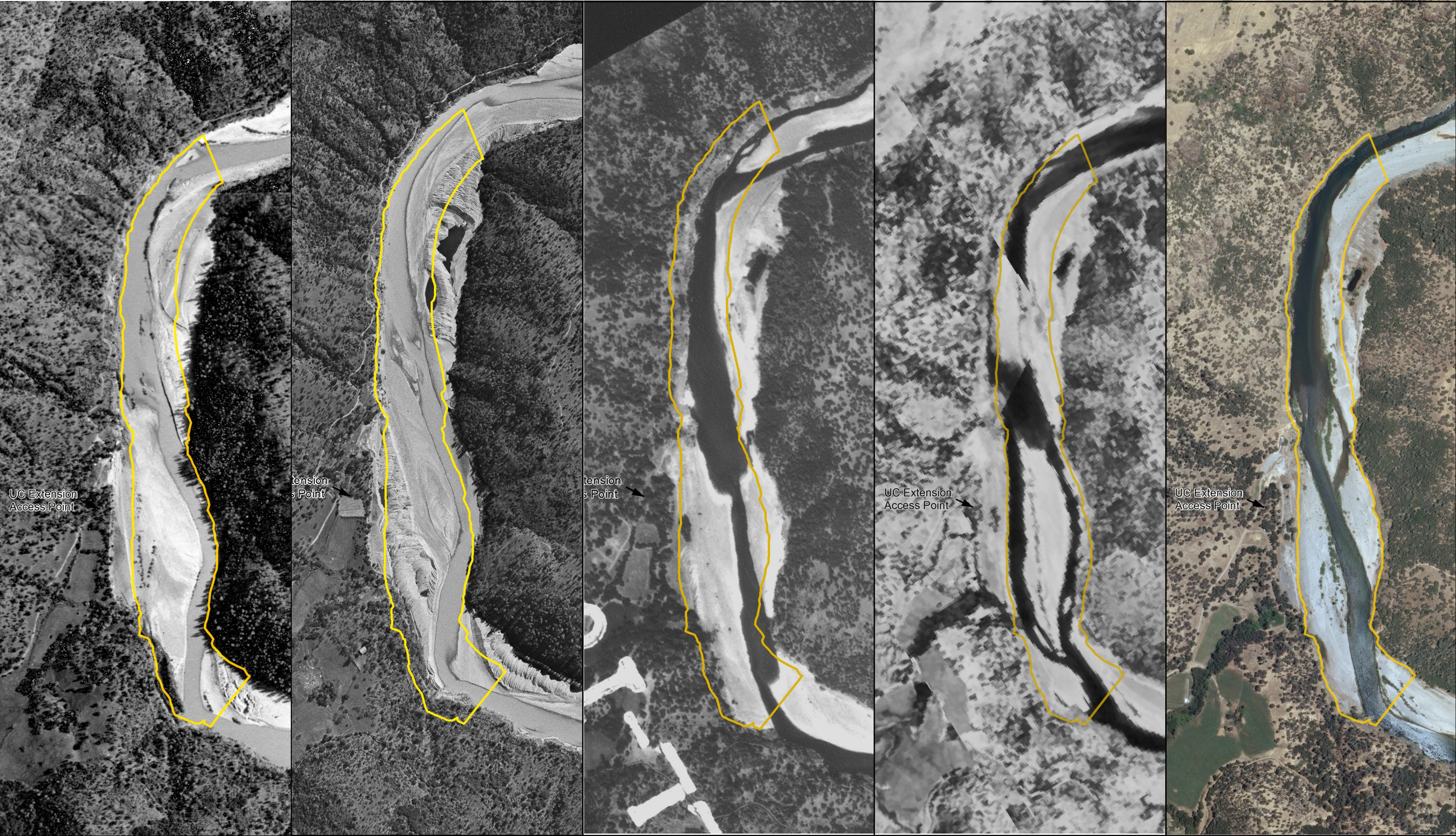






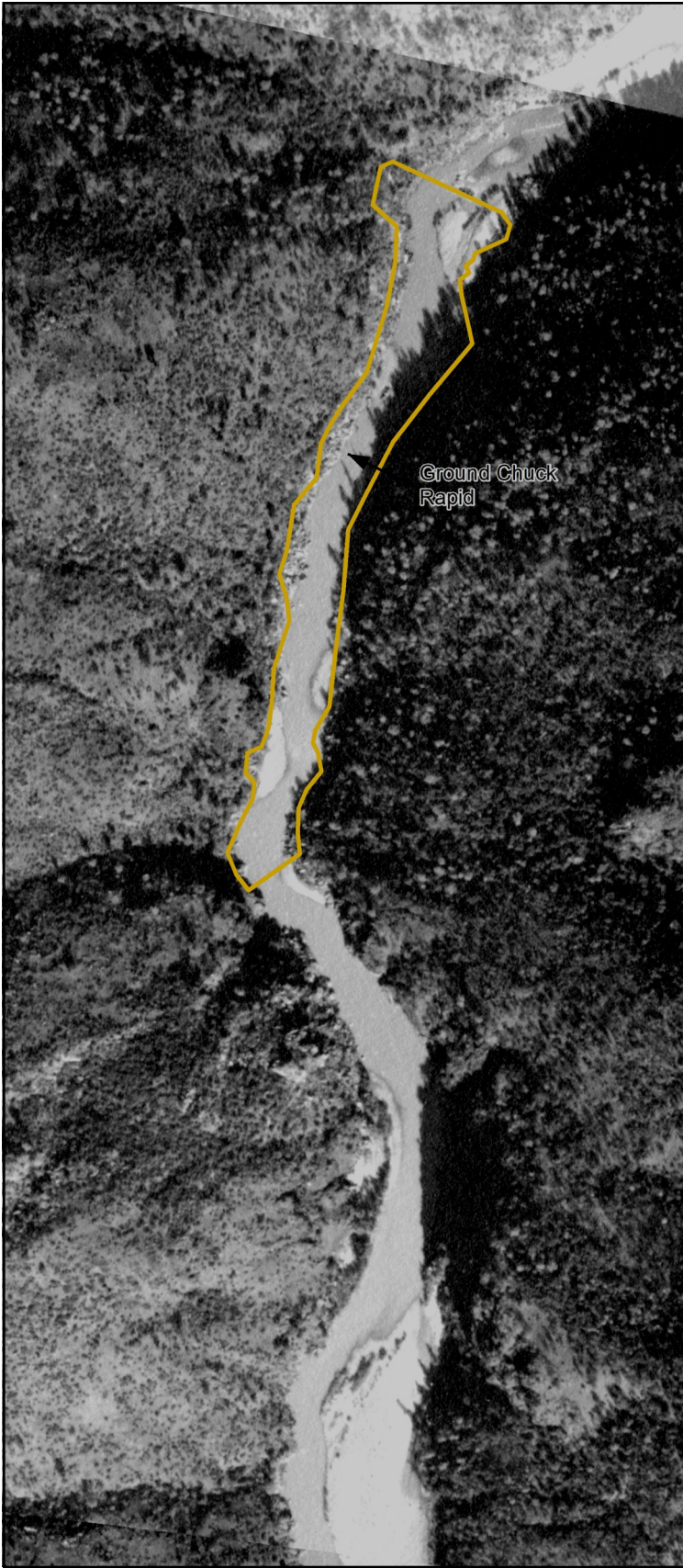
<p>February 22, 1947 (Flow 1,500 cfs) Imagery Provided By California Department of Water Resources Photo Not Orthorectified</p>	<p>July 13, 1970 (Flow 703 cfs) Imagery Provided By California Department of Water Resources Photo Not Orthorectified</p>	<p>June 19, 1987 (Flow 962 cfs) Imagery Provided By California Department of Water Resources Photo Not Orthorectified</p>	<p>July 12, 2010 and July 13, 2010 (Flow 3,300 cfs) Imagery Provided By National Agricultural Imagery Program Photo Orthorectified</p>
--	--	--	---





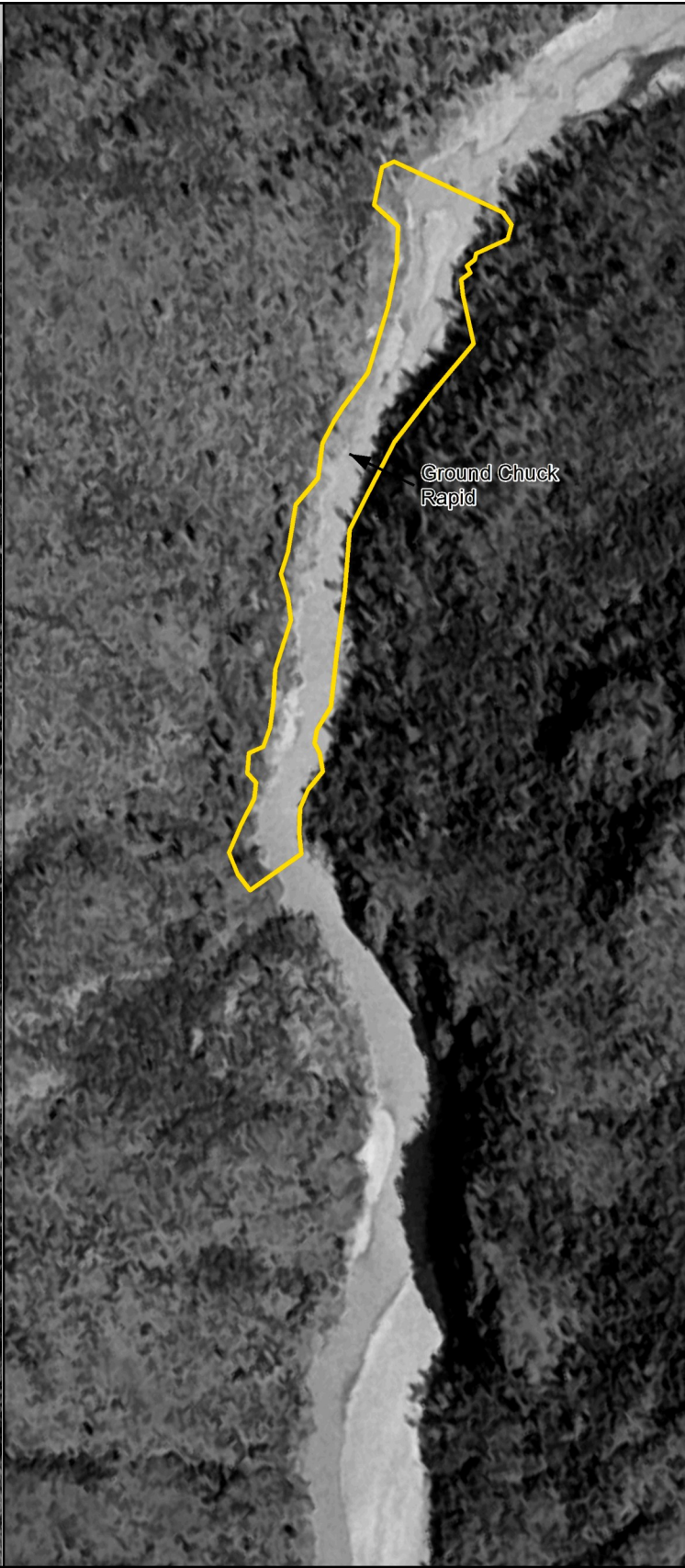
1937 Imagery Provided By California Department of Water Resources Photo Not Orthorectified	February 22, 1947 (Flow 1,500 cfs) Imagery Provided By California Department of Water Resources Photo Not Orthorectified	July 13, 1970 (Flow 703 cfs) Imagery Provided By California Department of Water Resources Photo Not Orthorectified	June 19, 1987 (Flow 962 cfs) Imagery Provided By California Department of Water Resources Photo Not Orthorectified	July 13, 2010 (Flow 3,300 cfs) Imagery Provided By National Agricultural Imagery Program Photo Orthorectified
---	---	---	---	--





1937

Imagery Provided By California Department of Water Resources
Photo Not Orthorectified



February 22, 1947 (Flow 1,500 cfs)

Imagery Provided By California Department of Water Resources
Photo Not Orthorectified



June 19, 1987 (Flow 962 cfs)

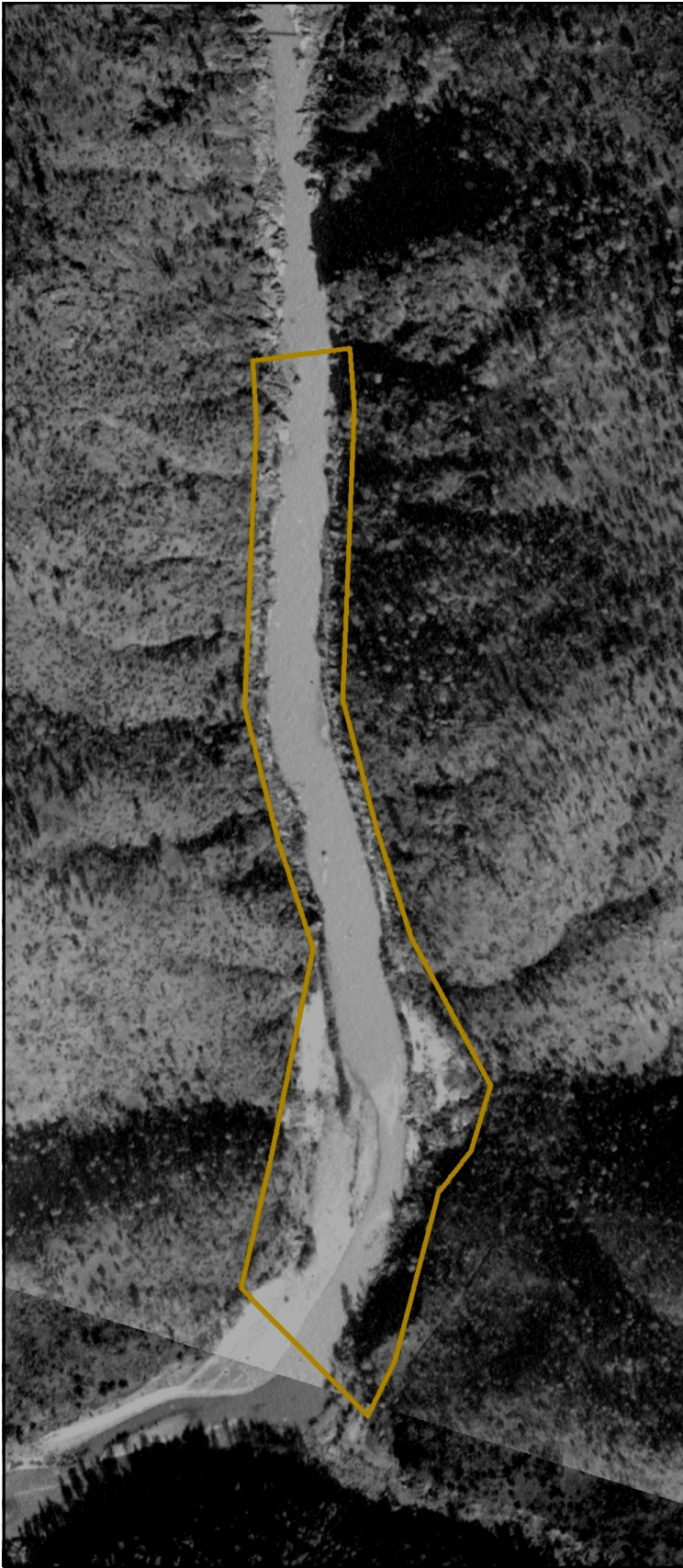
Imagery Provided By California Department of Water Resources
Photo Not Orthorectified



July 13, 2010 (Flow 3,300 cfs)

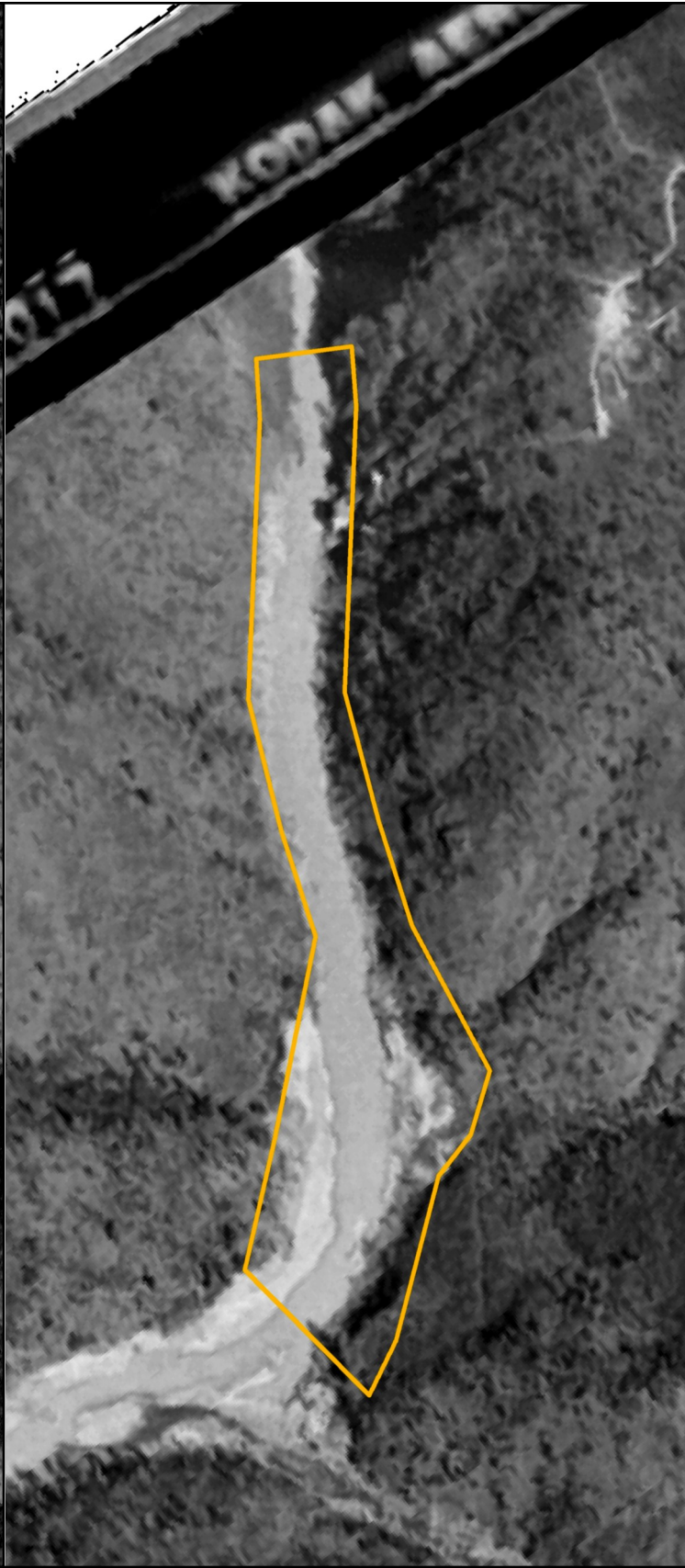
Imagery Provided By National Agricultural Imagery Program
Photo Orthorectified





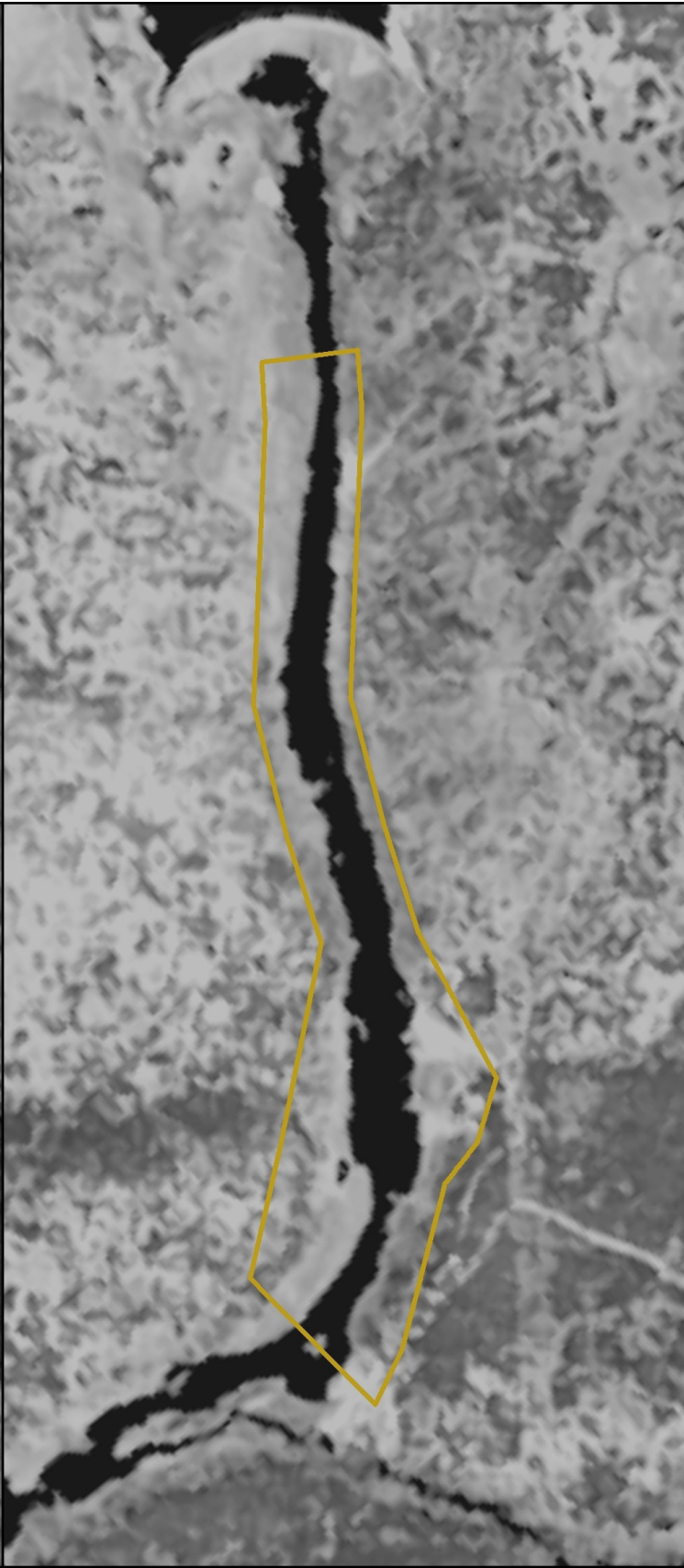
1937

Imagery Provided By California Department of Water Resources
Photo Not Orthorectified



February 22, 1947 (Flow 1,500 cfs)

Imagery Provided By California Department of Water Resources
Photo Not Orthorectified



June 19, 1987 (Flow 962 cfs)

Imagery Provided By California Department of Water Resources
Photo Not Orthorectified



July 13, 2010 (Flow 3,300 cfs)

Imagery Provided By California Department of Water Resources
Photo Not Orthorectified

