

Technical Memorandum 7-1
Endangered Species Act-Listed Plants

Attachment 7-1A
Botanical Species List

Yuba River Development Project
FERC Project No. 2246

December 2012

©2012, Yuba County Water Agency
All Rights Reserved

Table 7.1A-1. Yuba River Development Project Botanical Species List

Family ^a	Species Name ^b	General Location		Additional Location Description
		New Bullards Bar Reservoir	Other Project Features ^c	
Aceraceae	<i>Acer macrophyllum</i>	X	X	New Colgate Powerhouse
Amaryllidaceae	<i>Narcissus jonquilla</i>		X	New Colgate Powerhouse
Anacardiaceae	<i>Rhus trilobata</i>		X	Narrows #2 Powerhouse
	<i>Toxicodendron diversilobum</i>	X	X	Our House Diversion Dam
Apiaceae	<i>Angelica californica</i>	X		New Bullards Bar Reservoir (West)
	<i>Anthriscus caucalis</i>	X	X	Narrows #2 Powerhouse
	<i>Conium maculatum</i>		X	New Colgate Powerhouse
	<i>Daucus carota</i>	X	X	New Colgate Powerhouse
	<i>Daucus pusillus</i>	X	X	Narrows #2 Powerhouse
	<i>Eryngium castrense</i>		X	Narrows #2 Powerhouse
	<i>Lomatium californicum</i>		X	Narrows #2 Powerhouse
	<i>Lomatium marginatum</i>		X	Narrows #2 Powerhouse
	<i>Lomatium marginatum</i> var. <i>marginatum</i>		X	Log Cabin Dam
	<i>Lomatium utriculatum</i>	X	X	Narrows #2 Powerhouse
	<i>Osmorhiza brachypoda</i>	X		New Bullards Bar Reservoir (West)
	<i>Osmorhiza chilensis</i>	X	X	New Bullards Bar Reservoir
	<i>Osmorhiza occidentalis</i>		X	Log Cabin Dam
	<i>Perideridia lemmonii</i>	X		New Bullards Bar Reservoir
	<i>Perideridia oregana</i>	X		North Yuba River Arm
	<i>Sanicula bipinnata</i>	X	X	Narrows #2 Powerhouse
	<i>Sanicula bipinnatifida</i>	X	X	Narrows #2 Powerhouse
	<i>Sanicula crassicaulis</i>	X	X	Narrows #2 Powerhouse
	<i>Sanicula tuberosa</i>	X	X	Narrows #2 Powerhouse
	<i>Tauschia hartwegii</i>	X	X	Narrows #2 Powerhouse
	<i>Tauschia kelloggii</i>	X		Log Cabin Dam
	<i>Torilis arvensis</i>	X	X	Narrows #2 Powerhouse
	<i>Yabea microcarpa</i>		X	Log Cabin Dam
Apocynaceae	<i>Apocynum androsaemifolium</i>	X	X	New Bullards Bar Reservoir (West)
	<i>Apocynum cannabinum</i>	X		North Yuba River Arm

Family ^a	Species Name ^b	General Location		Additional Location Description
		New Bullards Bar Reservoir	Other Project Features ^c	
	<i>Vinca major</i>		X	New Colgate Powerhouse
Araliaceae	<i>Aralia californica</i>	X		New Bullards Bar Reservoir
	<i>Hedera helix</i>		X	Log Cabin Dam
Aristolochiaceae	<i>Aristolochia californica</i>	X	X	Narrows #2 Powerhouse
	<i>Asarum hartwegii</i>	X	X	Log Cabin Dam
	<i>Asclepias cordifolia</i>	X		New Bullards Bar Reservoir (West)
	<i>Asclepias fascicularis</i>		X	New Bullards Bar Reservoir
	<i>Asclepias speciosa</i>		X	New Bullards Bar Reservoir
Asteraceae	<i>Achillea millefolium</i>	X	X	Narrows #2 Powerhouse
	<i>Achyrrachaena mollis</i>		X	New Colgate Powerhouse
	<i>Adenocaulon bicolor</i>	X	X	Log Cabin Dam
	<i>Agoseris grandiflora</i>	X	X	New Bullards Bar Reservoir (East)
	<i>Agoseris heterophylla</i>	X	X	Narrows #2 Powerhouse
	<i>Agoseris retrorsa</i>	X	X	New Bullards Bar Reservoir
	<i>Anaphalis margaritacea</i>	X	X	New Colgate Powerhouse
	<i>Antennaria geyeri</i>	X		New Bullards Bar Reservoir (East)
	<i>Artemisia douglasiana</i>	X	X	New Colgate Powerhouse
	<i>Aster eatonii</i>	X		New Bullards Bar Reservoir
	<i>Aster oregonensis</i>	X		New Bullards Bar Reservoir East
	<i>Aster radulinus</i>	X		New Bullards Bar Reservoir
	<i>Baccharis pilularis</i>	X	X	Narrows #2 Powerhouse
	<i>Brickellia californica</i>	X	X	Our House Diversion Dam
	<i>Calycadenia multiglandulosa</i>	X		North Yuba River Arm
	<i>Carduus pycnocephalus</i>	X	X	Narrows #2 Powerhouse
	<i>Centaurea melitensis</i>	X	X	Narrows #2 Powerhouse
	<i>Centaurea solstitialis</i>	X	X	Narrows #2 Powerhouse
	<i>Chamomilla suaveolens</i>	X	X	New Colgate Powerhouse
	<i>Chondrilla juncea</i>	X	X	Narrows #2 Powerhouse
	<i>Chrysanthemum leucanthemum</i>	X		New Bullards Bar Reservoir
	<i>Cichorium intybus</i>	X		New Bullards Bar Reservoir

Family ^a	Species Name ^b	General Location		Additional Location Description
		New Bullards Bar Reservoir	Other Project Features ^c	
	<i>Cirsium occidentale</i> var. <i>venustum</i>	X	X	New Colgate Powerhouse
	<i>Cirsium vulgare</i>	X	X	Narrows #2 Powerhouse
	<i>Conyza bonariensis</i>	X	X	New Bullards Bar Reservoir
	<i>Conyza canadensis</i>	X	X	New Colgate Powerhouse
	<i>Coreopsis grandiflora</i>	X		New Bullards Bar Reservoir (Recreation Area)
	<i>Crepis capillaris</i>	X		New Bullards Bar Reservoir
	<i>Ericameria bloomeri</i>		X	Log Cabin Dam
	<i>Ericameria arborescens</i>	X		New Colgate Powerhouse
	<i>Erigeron foliosus</i> var. <i>hartwegii</i>	X		New Bullards Bar Reservoir Access Road
	<i>Erigeron inornatus</i> var. <i>inornatus</i>	X		New Bullards Bar Reservoir (East)
	<i>Eriophyllum lanatum</i>	X	X	Narrows #2 Powerhouse
	<i>Eriophyllum lanatum</i> var. <i>croceum</i>	X		New Bullards Bar Reservoir
	<i>Eriophyllum lanatum</i> var. <i>grandiflorum</i>		X	New Bullards Bar Reservoir
	<i>Eurybia radulina</i>	X		New Bullards Bar Reservoir
	<i>Euthamia occidentalis</i>	X		New Bullards Bar Reservoir
	<i>Filago gallica</i>	X	X	Narrows #2 Powerhouse
	<i>Gnaphalium canescens</i> ssp. <i>beneolens</i>	X	X	New Colgate Powerhouse
	<i>Gnaphalium luteo-album</i>	X	X	Narrows #2 Powerhouse
	<i>Gnaphalium palustre</i>	X		New Bullards Bar Reservoir
	<i>Gnaphalium stramineum</i>	X		New Bullards Bar Reservoir
	<i>Grindelia hirsutula</i> var. <i>davyi</i>		X	Narrows #2 Powerhouse
	<i>Helenium bigelovii</i>	X		North Yuba River Arm
	<i>Helianthella californica</i> var. <i>nevadensis</i>	X		New Bullards Bar Reservoir
	<i>Hemizonia fitchii</i>		X	New Colgate Powerhouse
	<i>Heterotheca grandiflora</i>	X		New Bullards Bar Reservoir (East)
	<i>Heterotheca oregona</i> var. <i>compacta</i>	X		North Yuba River Arm
	<i>Heterotheca oregona</i> var. <i>rudis</i>	X		North Yuba River Arm
	<i>Hieracium albiflorum</i>	X	X	New Bullards Bar Reservoir
	<i>Hyphochaeris glabra</i>	X	X	Narrows #2 Powerhouse
	<i>Hypochaeris radicata</i>	X	X	Narrows #2 Powerhouse

Family ^a	Species Name ^b	General Location		Additional Location Description
		New Bullards Bar Reservoir	Other Project Features ^c	
	<i>Lactuca saligna</i>	X		New Bullards Bar Reservoir
	<i>Lactuca serriola</i>	X	X	Narrows #2 Powerhouse
	<i>Leontodon taraxacoides</i> ssp. <i>longirostris</i>		X	Narrows #2 Powerhouse
	<i>Leucanthemum vulgare</i>	X		New Bullards Bar Reservoir
	<i>Madia citriodora</i>		X	Narrows #2 Powerhouse
	<i>Madia elegans</i> ssp. <i>densifolia</i>	X		New Bullards Bar Reservoir
	<i>Madia elegans</i> ssp. <i>vernalis</i>	X	X	New Bullards Bar Reservoir
	<i>Madia gracilis</i>	X	X	New Bullards Bar Reservoir
	<i>Madia madioides</i>	X		New Bullards Bar Reservoir
	<i>Madia minima</i>	X		North Yuba River Arm
	<i>Micropus californicus</i>		X	Narrows #2 Powerhouse
	<i>Psilocarphus tenellus</i> var. <i>tenellus</i>	X		New Bullards Bar Reservoir
	<i>Rudbeckia californica</i>	X		North Yuba River Arm
	<i>Senecio intergerrimus</i>	X		New Bullards Bar Reservoir (East)
	<i>Senecio vulgaris</i>	X	X	Narrows #2 Powerhouse
	<i>Silybum marianum</i>		X	Narrows #2 Powerhouse
	<i>Solidago californica</i>	X	X	Narrows #2 Powerhouse
	<i>Solidago canadensis</i> ssp. <i>elongata</i>	X		New Bullards Bar Reservoir
	<i>Soliva sessilis</i>	X	X	Narrows #2 Powerhouse
	<i>Sonchus asper</i> ssp. <i>asper</i>	X	X	Narrows #2 Powerhouse
	<i>Sonchus oleraceus</i>	X		New Bullards Bar Reservoir
	<i>Stephanomeria paniculata</i>	X		New Bullards Bar Reservoir
	<i>Stephanomeria virgata</i> ssp. <i>pleurocarpa</i>	X	X	New Colgate Powerhouse
	<i>Tanacetum parthenium</i>	X		
	<i>Tanacetum vulgare</i>	X		New Bullards Bar Reservoir
	<i>Taraxacum officinale</i>	X	X	New Colgate Powerhouse
	<i>Tragopogon dubius</i>		X	New Colgate Powerhouse
	<i>Uropappus lindleyi</i>	X	X	Narrows #2 Powerhouse
	<i>Wyethia angustifolium</i>	X		New Bullards Bar Reservoir
	<i>Xanthium strumarium</i>	X	X	New Colgate Powerhouse

Family ^a	Species Name ^b	General Location		Additional Location Description
		New Bullards Bar Reservoir	Other Project Features ^c	
Berberidaceae	<i>Berberis aquifolium</i>	X	X	Log Cabin Dam
	<i>Berberis aquifolium</i> var. <i>dictyota</i>		X	Our House Diversion Dam
	<i>Berberis nervosa</i>	X		New Bullards Bar Reservoir
Betulaceae	<i>Alnus rhombifolia</i>	X	X	New Colgate Powerhouse
	<i>Corylus cornuta</i> var. <i>californica</i>	X	X	New Bullards Bar Reservoir
Blechnaceae	<i>Woodwardia fimbriata</i>	X	X	New Colgate Powerhouse
Boraginaceae	<i>Amsinckia intermedia</i>	X	X	Narrows #2 Powerhouse
	<i>Amsinckia menziesii</i> var. <i>intermedia</i>	X	X	Narrows #2 Powerhouse
	<i>Amsinckia menziesii</i> var. <i>menziesii</i>	X	X	Narrows #2 Powerhouse
	<i>Cryptantha affinis</i>	X		New Bullards Bar Reservoir
	<i>Cryptantha flaccida</i>	X		North Yuba River Arm
	<i>Cynoglossum grande</i>	X	X	Narrows #2 Powerhouse
	<i>Myosotis laxa</i>	X		New Bullards Bar Reservoir
	<i>Plagiobothrys nothofulvus</i>	X	X	Narrows #2 Powerhouse
Brassicaceae	<i>Arabis glabra</i> var. <i>glabra</i>	X	X	New Bullards Bar Reservoir
	<i>Athysanus pusillus</i>	X	X	Our House Diversion Dam
	<i>Barbarea orthoceras</i>		X	Log Cabin Dam
	<i>Brassica nigra</i>	X		New Bullards Bar Reservoir (East)
	<i>Brassica rapa</i>		X	New Colgate Powerhouse
	<i>Cardamine californica</i>	X	X	Our House Diversion Dam
	<i>Cardamine oligosperma</i>	X	X	Narrows #2 Powerhouse
	<i>Cardamine pachystigma</i> var. <i>pachystigma</i>	X	X	New Bullards Bar Reservoir
	<i>Descurainia sophia</i>	X		North Yuba River Arm
	<i>Draba verna</i>	X	X	Log Cabin Dam
	<i>Erysimum capitatum</i>	X	X	New Bullards Bar Reservoir
	<i>Erysimum capitatum</i> ssp. <i>capitatum</i>	X		New Bullards Bar Reservoir
	<i>Hirschfeldia incana</i>	X	X	New Colgate Powerhouse
	<i>Lepidium campestre</i>		X	Log Cabin Dam
	<i>Raphanus raphanistrum</i>		X	Narrows #2 Powerhouse
	<i>Rorippa curvisiliqua</i>	X		New Bullards Bar Reservoir

Family ^a	Species Name ^b	General Location		Additional Location Description
		New Bullards Bar Reservoir	Other Project Features ^c	
	<i>Rorippa nasturtium-aquaticum</i>	X		New Bullards Bar Reservoir
	<i>Rorippa palustris</i>		X	Log Cabin Dam
	<i>Sisymbrium officinale</i>		X	Our House Diversion Dam
	<i>Streptanthus polygaloides</i>	X		New Bullards Bar Reservoir
	<i>Streptanthus tortuosus var. suffrutescens</i>	X	X	North Yuba River Arm
	<i>Thysanocarpus curvipes</i>	X	X	Narrows #2 Powerhouse
Calycanthaceae	<i>Calycanthus occidentalis</i>	X	X	Narrows #2 Powerhouse
Campanulaceae	<i>Campanula prenanthoides</i>	X		New Bullards Bar Reservoir (East)
	<i>Githopsis diffusa</i>	X		New Bullards Bar Reservoir
	<i>Githopsis specularioides</i>	X		New Bullards Bar Reservoir
	<i>Heterocodon rariflorum</i>	X		New Bullards Bar Reservoir (East)
Caprifoliaceae	<i>Lonicera ciliosa</i>	X	X	Our House Diversion Dam
	<i>Lonicera hispidula</i>	X	X	Narrows #2 Powerhouse
	<i>Lonicera interrupta</i>		X	Log Cabin Dam
	<i>Lonicera involucrata var. involucrata</i>	X		New Bullards Bar Reservoir
	<i>Sambucus mexicana</i>		X	Narrows #2 Powerhouse
	<i>Symphoricarpos albus var. laevigatus</i>	X	X	Narrows #2 Powerhouse
	<i>Symphoricarpos mollis</i>		X	Narrows #2 Powerhouse
Caryophyllaceae	<i>Cerastium fontanum</i>	X	X	New Bullards Bar Reservoir
	<i>Cerastium glomeratum</i>	X	X	Narrows #2 Powerhouse
	<i>Lychnis coronaria</i>	X		North Yuba River Arm
	<i>Minuartia douglasii</i>	X		North Yuba River Arm
	<i>Moehringia macrophylla</i>	X		New Bullards Bar Reservoir (East)
	<i>Petrorhagia prolifera</i>	X	X	Narrows #2 Powerhouse
	<i>Saponaria officinalis</i>		X	Our House Diversion Dam
	<i>Scleranthus annuus</i>		X	Narrows #2 Powerhouse
	<i>Silene antirrhina</i>	X		New Bullards Bar Reservoir
	<i>Silene bridgesii</i>	X		New Bullards Bar Reservoir
	<i>Silene californica</i>	X		New Bullards Bar Reservoir (East)
	<i>Silene campanulata</i>		X	New Bullards Bar Reservoir

Family ^a	Species Name ^b	General Location		Additional Location Description
		New Bullards Bar Reservoir	Other Project Features ^c	
	<i>Silene campanulata ssp. glandulosa</i>	X		New Bullards Bar Reservoir
	<i>Silene gallica</i>		X	Our House Diversion Dam
	<i>Spergula arvensis</i>		X	Narrows #2 Powerhouse
	<i>Spergularia rubra</i>		X	Log Cabin Dam
	<i>Stellaria longipes var. longipes</i>	X		New Bullards Bar Reservoir
	<i>Stellaria media</i>	X	X	Narrows #2 Powerhouse
	<i>Stellaria pallida</i>	X		New Bullards Bar Reservoir
	<i>Velezia rigida</i>		X	Our House Diversion Dam
Celastraceae	<i>Pachystima myrsinites</i>	X		New Bullards Bar Reservoir
Chenopodiaceae	<i>Chenopodium album</i>	X		New Bullards Bar Reservoir (Recreation Area)
	<i>Chenopodium pumilio</i>	X		North Yuba River Arm
	<i>Chenopodium ambrosoides</i>			North Yuba River Arm
Convolvulaceae	<i>Calystegia malacophylla</i>	X		New Bullards Bar Reservoir (East)
	<i>Calystegia malacophylla ssp. malacophylla</i>	X		New Bullards Bar Reservoir
	<i>Calystegia occidentalis ssp. occidentalis</i>	X	X	New Bullards Bar Reservoir
	<i>Convolvulus arvensis</i>	X	X	Narrows #2 Powerhouse
Cornaceae	<i>Cornus nuttallii</i>	X	X	New Bullards Bar Reservoir
	<i>Cornus sessilis</i>		X	Log Cabin Dam
	<i>Cornus sericea ssp. sericea</i>	X		New Bullards Bar Reservoir
Crassulaceae	<i>Crassula connata</i>		X	Narrows #2 Powerhouse
	<i>Crassula tillaea</i>		X	Narrows #2 Powerhouse
	<i>Dudleya cymosa</i>	X	X	Narrows #2 Powerhouse
	<i>Parvisedum pumilum</i>	X		New Bullards Bar Reservoir
	<i>Sedum spathulifolium</i>	X	X	New Bullards Bar Reservoir
Cucurbitaceae	<i>Marah fabaceus</i>	X	X	Narrows #2 Powerhouse
	<i>Marah horridus</i>		X	New Colgate Powerhouse
	<i>Marah watsonii</i>	X	X	Log Cabin Dam
Cupressaceae	<i>Calocedrus decurrens</i>	X	X	New Bullards Bar Reservoir
	<i>Sequoiadendron giganteum</i>	X		New Bullards Bar Reservoir
Cyperaceae	<i>Carex angustata</i>	X	X	Our House Diversion Dam

Family ^a	Species Name ^b	General Location		Additional Location Description
		New Bullards Bar Reservoir	Other Project Features ^c	
	<i>Carex barbarae</i>	X		New Bullards Bar Reservoir
	<i>Carex bolanderi</i>	X		New Bullards Bar Reservoir
	<i>Carex deweyana</i>	X		New Bullards Bar Reservoir
	<i>Carex fracta</i>	X		New Bullards Bar Reservoir (Recreation Area)
	<i>Carex hirtissima</i>	X	X	New Bullards Bar Reservoir
	<i>Carex lenticularis var. impressa</i>	X		New Bullards Bar Reservoir (Recreation Area)
	<i>Carex multicaulis</i>	X	X	New Bullards Bar Reservoir (East)
	<i>Carex nebrascensis</i>		X	New Colgate Powerhouse
	<i>Carex nudata</i>	X		New Bullards Bar Reservoir
	<i>Cyperus eragrostis</i>		X	New Colgate Powerhouse
	<i>Eleocharis acicularis</i>	X		New Bullards Bar Reservoir (Recreation Area)
	<i>Scirpus congdonii</i>		X	Log Cabin Dam
	<i>Scirpus microcarpus</i>	X	X	New Colgate Powerhouse
Dennstaedtiaceae	<i>Pteridium aquilinum var. pubescens</i>	X	X	New Bullards Bar Reservoir
Dryopteridaceae	<i>Athyrium filix-femina</i>	X		New Bullards Bar Reservoir (East)
	<i>Cystopteris fragilis</i>		X	Our House Diversion Dam
	<i>Dryopteris arguta</i>	X		New Bullards Bar Reservoir
	<i>Polystichum imbricans ssp. curtum</i>	X		New Bullards Bar Reservoir
	<i>Polystichum imbricans ssp. imbricans</i>	X	X	New Bullards Bar Reservoir
	<i>Polystichum munitum</i>	X	X	New Bullards Bar Reservoir
Equisetaceae	<i>Equisetum arvense</i>	X	X	New Bullards Bar Reservoir (West)
	<i>Equisetum hyemale ssp. affine</i>	X		New Bullards Bar Reservoir
	<i>Equisetum laevigatum</i>	X		New Bullards Bar Reservoir (East)
Ericaceae	<i>Allotropa virgata</i>	X		New Bullards Bar Reservoir (Recreation Area)
	<i>Arbutus menziesii</i>	X	X	Narrows #2 Powerhouse
	<i>Arctostaphylos nevadensis</i>	X		New Bullards Bar Reservoir
	<i>Arctostaphylos viscida</i>	X	X	Narrows #2 Powerhouse
	<i>Chimaphila menziesii</i>	X		New Bullards Bar Reservoir (West)
	<i>Chimaphila umbellata</i>	X		New Bullards Bar Reservoir (East)
	<i>Rhododendron occidentale</i>	X	X	New Bullards Bar Reservoir

Family ^a	Species Name ^b	General Location		Additional Location Description
		New Bullards Bar Reservoir	Other Project Features ^c	
	<i>Vaccinium parvifolium</i>	X		North Yuba River Arm
Euphorbiaceae	<i>Chamaesyce maculata</i>	X		New Bullards Bar Reservoir
	<i>Chamaesyce serpyllifolia ssp. serpyllifolia</i>	X		New Bullards Bar Reservoir
	<i>Eremocarpus setigerus</i>	X	X	Narrows #2 Powerhouse
	<i>Euphorbia crenulata</i>	X		New Bullards Bar Reservoir
	<i>Euphorbia peplus</i>	X	X	Narrows #2 Powerhouse
Fabaceae	<i>Cercis occidentalis</i>	X	X	New Bullards Bar Reservoir
	<i>Cytisus scoparius</i>	X	X	New Colgate Powerhouse
	<i>Genista monspessulana</i>	X	X	New Colgate Powerhouse
	<i>Lathyrus latifolius</i>	X	X	New Colgate Powerhouse
	<i>Lathyrus nevadensis var. nevadensis</i>	X		New Bullards Bar Reservoir
	<i>Lathyrus sulphureus</i>	X	X	New Bullards Bar Reservoir
	<i>Lotus grandiflorus var. macranthus</i>	X		New Bullards Bar Reservoir
	<i>Lotus humistratus</i>		X	New Colgate Powerhouse
	<i>Lotus incanus</i>	X		New Bullards Bar Reservoir
	<i>Lotus micranthus</i>	X	X	Narrows #2 Powerhouse
	<i>Lotus nevadensis</i>	X		New Bullards Bar Reservoir
	<i>Lotus nevadensis var. nevadensis</i>	X	X	New Bullards Bar Reservoir
	<i>Lotus oblongifolius var. oblongifolius</i>		X	Log Cabin Dam
	<i>Lotus purshianus</i>	X	X	New Colgate Powerhouse
	<i>Lotus scoparius var. scoparius</i>	X		New Bullards Bar Reservoir
	<i>Lotus stipularis</i>	X		New Bullards Bar Reservoir
	<i>Lotus wrangelianus</i>	X	X	Narrows #2 Powerhouse
	<i>Lupinus albifrons</i>	X	X	New Colgate Powerhouse
	<i>Lupinus arbustus</i>	X		New Bullards Bar Reservoir
	<i>Lupinus benthamii</i>		X	Log Cabin Dam
	<i>Lupinus bicolor</i>	X	X	Narrows #2 Powerhouse
	<i>Lupinus formosus var. robustus</i>	X		New Bullards Bar Reservoir
	<i>Lupinus grayi</i>	X		New Bullards Bar Reservoir
	<i>Lupinus latifolius</i>	X		New Bullards Bar Reservoir

Family ^a	Species Name ^b	General Location		Additional Location Description
		New Bullards Bar Reservoir	Other Project Features ^c	
	<i>Lupinus latifolius var. columbianus</i>	X		New Bullards Bar Reservoir (West)
	<i>Lupinus microcarpus var. densiflorus</i>		X	New Bullards Bar Reservoir
	<i>Lupinus nanus</i>	X	X	Narrows #2 Powerhouse
	<i>Lupinus polyphyllus var. burkei</i>	X	X	New Bullards Bar Reservoir
	<i>Lupinus stiversii</i>	X	X	New Bullards Bar Reservoir
	<i>Medicago arabica</i>	X	X	Narrows #2 Powerhouse
	<i>Medicago lupulina</i>	X		New Bullards Bar Reservoir
	<i>Medicago polymorpha</i>		X	Log Cabin Dam
	<i>Melilotus albus</i>	X	X	New Bullards Bar Reservoir
	<i>Melilotus officinalis</i>	X	X	New Colgate Powerhouse
	<i>Robinia pseudoacacia</i>	X		North Yuba River Arm
	<i>Trifolium albopurpureum var. dichotomum</i>	X		New Bullards Bar Reservoir
	<i>Trifolium campestre</i>	X		New Bullards Bar Reservoir
	<i>Trifolium ciliolatum</i>	X	X	New Bullards Bar Reservoir
	<i>Trifolium dubium</i>		X	Narrows #2 Powerhouse
	<i>Trifolium glomeratum</i>		X	Log Cabin Dam
	<i>Trifolium hirtum</i>	X	X	Narrows #2 Powerhouse
	<i>Trifolium microcephalum</i>	X		New Bullards Bar Reservoir
	<i>Trifolium pratense</i>		X	New Colgate Powerhouse
	<i>Trifolium repens</i>		X	New Colgate Powerhouse
	<i>Trifolium subterraneum</i>		X	Narrows #2 Powerhouse
	<i>Trifolium variegatum</i>	X		New Bullards Bar Reservoir
	<i>Trifolium willdenovii</i>	X	X	New Bullards Bar Reservoir
	<i>Trifolium wormskioldii</i>	X		New Bullards Bar Reservoir
	<i>Vicia americana</i>	X		New Bullards Bar Reservoir
	<i>Vicia americana var. americana</i>	X		New Bullards Bar Reservoir (West)
	<i>Vicia sativa ssp. nigra</i>		X	Narrows #2 Powerhouse
	<i>Vicia sativa ssp. sativa</i>		X	Narrows #2 Powerhouse
	<i>Vicia villosa</i>		X	New Colgate Powerhouse
Fagaceae	<i>Lithocarpus densiflora</i>	X	X	New Bullards Bar Reservoir

Family ^a	Species Name ^b	General Location		Additional Location Description
		New Bullards Bar Reservoir	Other Project Features ^c	
	<i>Quercus alba</i>	X		New Bullards Bar Reservoir
	<i>Quercus chrysolepis</i>	X	X	New Colgate Powerhouse
	<i>Quercus douglasii</i>	X	X	Narrows #2 Powerhouse
	<i>Quercus kelloggii</i>	X	X	Narrows #2 Powerhouse
	<i>Quercus wislizeni</i>	X	X	Narrows #2 Powerhouse
Garryaceae	<i>Garrya fremontii</i>	X		New Bullards Bar Reservoir (East)
Gentianaceae	<i>Centaurium erythraea</i>		X	New Colgate Powerhouse
	<i>Centaurium venustum</i>		X	Our House Diversion Dam
	<i>Cicendia quadrangularis</i>	X		New Bullards Bar Reservoir (Colgate Tunnel)
Geraniaceae	<i>Erodium botrys</i>	X	X	Narrows #2 Powerhouse
	<i>Erodium brachycarpum</i>	X	X	Narrows #2 Powerhouse
	<i>Erodium cicutarium</i>	X	X	Narrows #2 Powerhouse
	<i>Geranium carolinianum</i>	X		New Bullards Bar Reservoir
	<i>Geranium dissectum</i>	X	X	New Bullards Bar Reservoir
	<i>Geranium molle</i>	X	X	Narrows #2 Powerhouse
Grossulariaceae	<i>Ribes nevadense</i>	X		New Bullards Bar Reservoir
	<i>Ribes roezlii</i>		X	Our House Diversion Dam
	<i>Ribes roezlii</i> var. <i>roezlii</i>	X	X	New Bullards Bar Reservoir
	<i>Ribes viscosissimum</i>		X	Log Cabin Dam
Hippocastanaceae	<i>Aesculus californica</i>		X	Narrows #2 Powerhouse
Hydrophyllaceae	<i>Draperia systyla</i>	X		New Bullards Bar Reservoir
	<i>Eriodictyon californicum</i>	X	X	Narrows #2 Powerhouse
	<i>Hydrophyllum occidentale</i>	X		New Bullards Bar Reservoir (East)
	<i>Nemophila heterophylla</i>	X	X	New Colgate Powerhouse
	<i>Nemophila parviflora</i> var. <i>austiniae</i>		X	Narrows #2 Powerhouse
	<i>Nemophila pedunculata</i>	X		New Bullards Bar Reservoir (East)
	<i>Phacelia cicutaria</i>	X	X	Narrows #2 Powerhouse
	<i>Phacelia heterophylla</i> ssp. <i>virgata</i>	X	X	New Colgate Powerhouse
	<i>Phacelia imbricata</i> ssp. <i>imbricata</i>	X		North Yuba River Arm
	<i>Phacelia tanacetifolia</i>		X	Narrows #2 Powerhouse

Family ^a	Species Name ^b	General Location		Additional Location Description
		New Bullards Bar Reservoir	Other Project Features ^c	
	<i>Phacelia vallicola</i>	X		New Bullards Bar Reservoir
Hypericaceae	<i>Hypericum anagaloides</i>		X	
	<i>Hypericum concinnum</i>	X		New Bullards Bar Reservoir
	<i>Hypericum formosum</i> var. <i>scouleri</i>	X		New Bullards Bar Reservoir
	<i>Hypericum perforatum</i>	X	X	Narrows #2 Powerhouse
Iridaceae	<i>Crocasmia lucifer</i>		X	New Colgate Powerhouse
	<i>Iris hartwegii</i> ssp. <i>hartwegii</i>	X	X	New Bullards Bar Reservoir (Recreation Area)
	<i>Iris macrosiphon</i>		X	New Colgate Powerhouse
	<i>Sisyrinchium bellum</i>		X	New Colgate Powerhouse
Juncaceae	<i>Juncus balticus</i>	X	X	New Bullards Bar Reservoir (West)
	<i>Juncus bufonius</i> var. <i>bufonius</i>	X	X	New Bullards Bar Reservoir
	<i>Juncus bufonius</i> var. <i>congestus</i>	X		New Bullards Bar Reservoir
	<i>Juncus covillei</i> var. <i>obtusatus</i>	X		New Bullards Bar Reservoir
	<i>Juncus effusus</i>	X	X	New Colgate Powerhouse
	<i>Juncus effusus</i> var. <i>exiguus</i>	X		New Bullards Bar Reservoir
	<i>Juncus effusus</i> var. <i>pacificus</i>	X		New Bullards Bar Reservoir
	<i>Juncus occidentalis</i>	X		New Bullards Bar Reservoir (West)
	<i>Juncus patens</i>	X		North Yuba Arm
	<i>Juncus tenuis</i>	X		New Bullards Bar Reservoir
	<i>Juncus xiphioides</i>	X		North Yuba River Arm
	<i>Luzula comosa</i>	X		New Bullards Bar Reservoir
	<i>Luzula comosa</i> var. <i>comosa</i>	X	X	Log Cabin Dam
	<i>Luzula subsessilis</i>		X	Log Cabin Dam
Lamiaceae	<i>Lamium amplexicaule</i>		X	New Colgate Powerhouse
	<i>Marrubium vulgare</i>		X	Log Cabin Dam
	<i>Melissa officinalis</i>		X	Log Cabin Dam
	<i>Mentha arvensis</i>	X		North Yuba River Arm
	<i>Mentha pulegium</i>	X		New Bullards Bar Reservoir (West)
	<i>Monardella lanceolata</i>	X	X	New Bullards Bar Reservoir
	<i>Monardella sheltonii</i>		X	Narrows #2 Powerhouse

Family ^a	Species Name ^b	General Location		Additional Location Description
		New Bullards Bar Reservoir	Other Project Features ^c	
	<i>Prunella vulgaris</i>	X	X	Our House Diversion Dam
	<i>Prunella vulgaris var. lanceolata</i>		X	Log Cabin Dam
	<i>Scutellaria californica</i>	X		New Bullards Bar Reservoir
	<i>Scutellaria tuberosa</i>	X		New Bullards Bar Reservoir (West)
	<i>Stachys ajugoides</i>	X	X	Log Cabin Dam
	<i>Stachys ajugoides var rigida</i>		X	Narrows #2 Powerhouse
Lauraceae	<i>Umbellularia californica</i>	X	X	New Colgate Powerhouse
Liliaceae	<i>Allium campanulatum</i>	X		North Yuba River Arm
	<i>Allium membranaceum</i>	X	X	New Bullards Bar Reservoir
	<i>Allium peninsulare var. peninsulare</i>		X	Narrows #2 Powerhouse
	<i>Brodiaea coronaria ssp. coronaria</i>	X		New Bullards Bar Reservoir
	<i>Brodiaea elegans ssp. elegans</i>	X	X	New Bullards Bar Reservoir
	<i>Calochortus albus</i>	X	X	Narrows #2 Powerhouse
	<i>Calochortus monophyllus</i>	X	X	Log Cabin Dam
	<i>Chlorogalum pomeridianum var. pomeridianum</i>	X	X	Narrows #2 Powerhouse
	<i>Dichelostemma capitatum</i>	X	X	Narrows #2 Powerhouse
	<i>Dichelostemma capitatum ssp. capitatum</i>		X	Narrows #2 Powerhouse
	<i>Dichelostemma multiflorum</i>	X	X	New Bullards Bar Reservoir
	<i>Dichelostemma volubile</i>	X	X	Narrows #2 Powerhouse
	<i>Disporum hookeri</i>	X		New Bullards Bar Reservoir
	<i>Fritillaria eastwoodiae</i> **	X		New Bullards Bar Reservoir
	<i>Fritillaria recurva</i>	X	X	New Bullards Bar Reservoir (East)
	<i>Lilium parvum</i>	X		North Yuba River Arm
	<i>Lilium humboldtii ssp. humboldtii</i> **	X	X	Our House Diversion Dam
	<i>Smilacina racemosa</i>	X	X	New Bullards Bar Reservoir (East)
	<i>Trillium albidum</i>	X		New Bullards Bar Reservoir (West)
	<i>Triteleia bridgesii</i>	X		New Bullards Bar Reservoir
	<i>Triteleia hyacinthina</i>	X	X	North Yuba River Arm
	<i>Triteleia ixiooides ssp. scabra</i>	X		New Bullards Bar Reservoir
	<i>Triteleia laxa</i>	X	X	New Bullards Bar Reservoir

Family ^a	Species Name ^b	General Location		Additional Location Description
		New Bullards Bar Reservoir	Other Project Features ^c	
	<i>Erythronium multiscapoideum</i>	X	X	Narrows #2 Powerhouse
Limnanthaceae	<i>Limnanthes alba ssp. versicolor</i>	X		North Yuba River Arm
Linaceae	<i>Linum bienne</i>		X	Narrows #2 Powerhouse
Loasaceae	<i>Mentzelia dispersa</i>		X	Our House Diversion Dam
Lythraceae	<i>Lythrum hyssopifolia</i>	X		New Bullards Bar Reservoir
Malvaceae	<i>Malva neglecta</i>		X	New Colgate Powerhouse
	<i>Sidalcea glaucescens</i>	X		New Bullards Bar Reservoir
	<i>Sidalcea malviflora ssp. asprella</i>	X	X	New Bullards Bar Reservoir
Monotropaceae	<i>Pleuricospora fimbriolata</i>	X		New Bullards Bar Reservoir
Moraceae	<i>Ficus carica</i>		X	New Colgate Powerhouse
Oleaceae	<i>Fraxinus dipetala</i>	X		New Bullards Bar Reservoir
Onagraceae	<i>Circaea alpina ssp. pacifica</i>	X		New Bullards Bar Reservoir (West)
	<i>Clarkia biloba ssp. brandegeae</i> **		X	Our House Diversion Dam
	<i>Clarkia purpurea ssp. quadrivulnera</i>	X	X	Narrows #2 Powerhouse, New Colgate, Log Cabin, Our House
	<i>Clarkia rhomboidea</i>	X	X	New Bullards Bar Reservoir
	<i>Clarkia unguiculata</i>		X	New Colgate Powerhouse
	<i>Epilobium angustifolium ssp. circumvagum</i>	X		New Bullards Bar Reservoir
	<i>Epilobium brachycarpum</i>	X	X	New Bullards Bar Reservoir
	<i>Epilobium canum</i>	X		North Yuba River Arm
	<i>Epilobium canum ssp. angustifolium</i>	X		New Bullards Bar Reservoir
	<i>Epilobium ciliatum</i>		X	Narrows #2 Powerhouse
	<i>Epilobium ciliatum ssp. ciliatum</i>	X	X	Narrows #2 Powerhouse
	<i>Epilobium ciliatum ssp. glandulosum</i>	X		New Bullards Bar Reservoir
	<i>Epilobium foliosum</i>	X		New Bullards Bar Reservoir
	<i>Epilobium glaberrimum ssp. glaberrimum</i>	X		North Yuba River Arm
	<i>Epilobium minutum</i>	X	X	New Bullards Bar Reservoir
Orchidaceae	<i>Cephalanthera austiniiae</i>	X		New Bullards Bar Reservoir
	<i>Corallorhiza maculata</i>	X		New Bullards Bar Reservoir
	<i>Cypripedium fasciculatum</i>	X		New Bullards Bar Reservoir (East)

Family ^a	Species Name ^b	General Location		Additional Location Description
		New Bullards Bar Reservoir	Other Project Features ^c	
	<i>Epipactis gigantea</i>	X		North Yuba River Arm
	<i>Goodyera oblongifolia</i>	X	X	New Bullards Bar Reservoir (East)
	<i>Piperia elongata</i>	X	X	New Bullards Bar Reservoir
	<i>Piperia transversa</i>	X		Our House Diversion Dam
	<i>Spiranthes porrifolia</i>	X		North Yuba River Arm
Orobanchaceae	<i>Orobanche uniflora</i>	X	X	New Bullards Bar Reservoir
Papaveraceae	<i>Dicentra formosa</i>	X		New Bullards Bar Reservoir
	<i>Eschscholzia caespitosa</i>	X	X	Narrows #2 Powerhouse
	<i>Eschscholzia californica</i>		X	Narrows #2 Powerhouse
	<i>Eschscholzia lobbii</i>		X	Our House Diversion Dam
Philadelphaceae	<i>Philadelphus lewisii</i>	X	X	New Colgate Powerhouse
Phytolaccaceae	<i>Phytolacca americana</i> var. <i>americana</i>	X		New Bullards Bar Reservoir
Pinaceae	<i>Abies concolor</i>	X	X	New Bullards Bar Reservoir
	<i>Pinus halepensis</i>	X		New Bullards Bar Reservoir
	<i>Pinus lambertiana</i>	X	X	New Bullards Bar Reservoir
	<i>Pinus ponderosa</i>	X	X	New Colgate Powerhouse
	<i>Pinus sabiniana</i>		X	Narrows #2 Powerhouse
	<i>Pseudotsuga menziesii</i>	X	X	New Bullards Bar Reservoir
Plantaginaceae	<i>Plantago erecta</i>		X	Narrows #2 Powerhouse
	<i>Plantago lanceolata</i>	X	X	Narrows #2 Powerhouse
	<i>Plantago mason</i>		X	Log Cabin Dam
Poaceae	<i>Achnatherum lettermanii</i>	X		New Bullards Bar Reservoir
	<i>Achnatherum nelsonii</i> ssp. <i>dorei</i>	X		New Bullards Bar Reservoir
	<i>Aegilops triuncialis</i>	X	X	Narrows #2 Powerhouse
	<i>Agrostis capillaris</i>		X	Log Cabin Dam
	<i>Agrostis stolonifera</i>	X		New Bullards Bar Reservoir
	<i>Aira caryophyllea</i>	X	X	Narrows #2 Powerhouse
	<i>Andropogon virginicus</i> var. <i>virginicus</i>	X	X	Narrows #2 Powerhouse
	<i>Arrhenatherum elatius</i>		X	Narrows #2 Powerhouse
	<i>Avena barbata</i>	X	X	Narrows #2 Powerhouse

Family ^a	Species Name ^b	General Location		Additional Location Description
		New Bullards Bar Reservoir	Other Project Features ^c	
	<i>Avena fatua</i>	X	X	Narrows #2 Powerhouse
	<i>Brachypodium distachyon</i>	X	X	Narrows #2 Powerhouse
	<i>Briza maxima</i>		X	Log Cabin Dam
	<i>Briza minor</i>	X	X	Narrows #2 Powerhouse
	<i>Bromus carinatus</i>	X	X	New Bullards Bar Reservoir
	<i>Bromus diandrus</i>	X	X	Narrows #2 Powerhouse
	<i>Bromus hordeaceus</i>	X	X	Narrows #2 Powerhouse
	<i>Bromus inermis</i>	X		New Bullards Bar Reservoir
	<i>Bromus japonicus</i>	X	X	Narrows #2 Powerhouse
	<i>Bromus laevipes</i>	X		North Yuba River Arm
	<i>Bromus madritensis</i>	X	X	Narrows #2 Powerhouse
	<i>Bromus madritensis ssp. madritensis</i>		X	Narrows #2 Powerhouse
	<i>Bromus madritensis ssp. rubens</i>		X	Narrows #2 Powerhouse
	<i>Bromus sterilis</i>	X		New Bullards Bar Reservoir
	<i>Bromus tectorum</i>	X		New Bullards Bar Reservoir
	<i>Cynodon dactylon</i>	X	X	Narrows #2 Powerhouse
	<i>Cynosurus echinatus</i>	X	X	Narrows #2 Powerhouse
	<i>Dactylis glomerata</i>	X	X	Narrows #2 Powerhouse
	<i>Danthonia californica</i>	X		
	<i>Deschampsia danthonioides</i>	X		New Bullards Bar Reservoir
	<i>Deschampsia elongata</i>	X	X	New Bullards Bar Reservoir
	<i>Elymus elymoides</i>	X	X	Narrows #2 Powerhouse
	<i>Elymus elymoides ssp. californicus</i>		X	New Colgate Powerhouse
	<i>Elymus glaucus</i>		X	Narrows #2 Powerhouse
	<i>Elymus trachycaulus ssp. trachycaulus</i>	X		New Bullards Bar Reservoir
	<i>Elytrigia intermedia</i>		X	Our House Diversion Dam
	<i>Festuca idahoensis</i>	X		New Bullards Bar Reservoir
	<i>Festuca occidentalis</i>	X	X	New Bullards Bar Reservoir
	<i>Gastridium ventricosum</i>		X	New Colgate Powerhouse
	<i>Glyceria elata</i>	X		New Bullards Bar Reservoir

Family ^a	Species Name ^b	General Location		Additional Location Description
		New Bullards Bar Reservoir	Other Project Features ^c	
	<i>Holcus lanatus</i>	X	X	Narrows #2 Powerhouse
	<i>Hordeum marinum</i> var. <i>gussoneanum</i>	X	X	New Bullards Bar Reservoir
	<i>Hordeum murinum</i> ssp. <i>leporinum</i>	X	X	Log Cabin Dam
	<i>Hordeum murinum</i> ssp. <i>murinum</i>	X		New Bullards Bar Reservoir
	<i>Koeleria macrantha</i>	X		New Bullards Bar Reservoir
	<i>Lolium multiflorum</i>	X	X	Narrows #2 Powerhouse
	<i>Lolium perenne</i>		X	New Colgate Powerhouse
	<i>Melica aristata</i>	X		New Bullards Bar Reservoir
	<i>Melica bulbosa</i>	X		New Bullards Bar Reservoir
	<i>Melica californica</i>		X	Narrows #2 Powerhouse
	<i>Melica geyeri</i>	X		North Yuba River Arm
	<i>Melica torreyana</i>		X	New Colgate Powerhouse
	<i>Muhlenbergia rigens</i>	X	X	New Colgate Powerhouse
	<i>Nassella pulchra</i>		X	Narrows #2 Powerhouse
	<i>Panicum capillaris</i>	X	X	Log Cabin Dam
	<i>Paspalum dilatatum</i>		X	Narrows #2 Powerhouse
	<i>Phalaris aquatica</i>		X	Narrows #2 Powerhouse
	<i>Phalaris arundinacea</i>	X		New Bullards Bar Reservoir
	<i>Poa annua</i>	X	X	Narrows #2 Powerhouse
	<i>Poa bulbosa</i>	X	X	Our House Diversion Dam
	<i>Poa howellii</i>	X		New Bullards Bar Reservoir
	<i>Poa pratensis</i>	X	X	New Bullards Bar Reservoir
	<i>Poa secunda</i>	X		New Bullards Bar Reservoir
	<i>Poa secunda</i> ssp. <i>secunda</i>	X		New Bullards Bar Reservoir
	<i>Polypogon interruptus</i>		X	
	<i>Polypogon maritimus</i>	X		
	<i>Polypogon monspeliensis</i>	X	X	
	<i>Sorghum halepense</i>	X		New Bullards Bar Reservoir Access Road
	<i>Taeniatherum caput-medusae</i>		X	Narrows #2 Powerhouse
	<i>Torreyochloa pallida</i> var. <i>pauciflora</i>	X		New Bullards Bar Reservoir

Family ^a	Species Name ^b	General Location		Additional Location Description
		New Bullards Bar Reservoir	Other Project Features ^c	
	<i>Triticum aestivum</i>	X		New Bullards Bar Reservoir
	<i>Vulpia bromoides</i>		X	Narrows #2 Powerhouse
	<i>Vulpia microstachys</i> var. <i>pauciflora</i>	X		New Bullards Bar Reservoir
	<i>Vulpia myuros</i>	X	X	Narrows #2 Powerhouse
	<i>Vulpia octoflora</i>	X		North Yuba River Arm
Polemoniaceae	<i>Allophyllum divaricatum</i>		X	Our House Diversion Dam
	<i>Collomia heterophylla</i>	X	X	New Colgate Powerhouse
	<i>Gilia capitata</i>	X	X	New Colgate Powerhouse
	<i>Linanthus bicolor</i>		X	Narrows #2 Powerhouse
	<i>Linanthus filipes</i>	X		New Bullards Bar Reservoir (East)
	<i>Microsteris gracilis</i>	X		New Bullards Bar Reservoir (West)
	<i>Navarretia intertexta</i> ssp. <i>intertexta</i>		X	Log Cabin Dam
	<i>Navarretia pubescens</i>	X		New Bullards Bar Reservoir
Polygalaceae	<i>Polygala cornuta</i> var. <i>cornuta</i>	X	X	Our House Diversion Dam
Polygonaceae	<i>Chorizanthe membranacea</i>	X	X	Narrows #2 Powerhouse
	<i>Eriogonum compositum</i> var. <i>compositum</i>	X		North Yuba River Arm
	<i>Eriogonum nudum</i>	X		New Bullards Bar Reservoir (East)
	<i>Eriogonum nudum</i> var. <i>pubiflorum</i>		X	New Colgate Powerhouse
	<i>Eriogonum vimineum</i>		X	Our House Diversion Dam
	<i>Polygonum arenastrum</i>	X		New Bullards Bar Reservoir
	<i>Polygonum aviculare</i>		X	Our House Diversion Dam
	<i>Polygonum californicum</i>		X	Our House Diversion Dam
	<i>Polygonum douglasii</i> ssp. <i>spergulariiforme</i>	X		Log Cabin Dam
	<i>Pterostegia drymaroides</i>		X	New Colgate Powerhouse
	<i>Rumex acetosella</i>	X	X	New Bullards Bar Reservoir
	<i>Rumex crispus</i>	X	X	Narrows #2 Powerhouse
	<i>Rumex obtusifolius</i>	X	X	Log Cabin Dam
	<i>Rumex salicifolius</i> var. <i>triangulivalvis</i>	X		New Bullards Bar Reservoir
Polypodiaceae	<i>Polypodium calirhiza</i>	X	X	Narrows #2 Powerhouse
Portulacaceae	<i>Calandrinia ciliata</i>	X	X	Log Cabin Dam

Family ^a	Species Name ^b	General Location		Additional Location Description
		New Bullards Bar Reservoir	Other Project Features ^c	
	<i>Claytonia exigua ssp. exigua</i>	X		New Bullards Bar Reservoir (West)
	<i>Claytonia parviflora</i>	X	X	Narrows #2 Powerhouse
	<i>Claytonia perfoliata</i>	X	X	Narrows #2 Powerhouse
	<i>Claytonia rubra var. rubra</i>	X	X	New Bullards Bar Reservoir
	<i>Lewisia cantelovii</i> **	X		North Yuba River Arm
	<i>Montia parvifolia</i>	X		New Bullards Bar Reservoir
Potamogetonaceae	<i>Potamogeton natans</i>	X		New Bullards Bar Reservoir
Primulaceae	<i>Anagallis arvensis</i>	X	X	New Colgate Powerhouse
	<i>Dodecatheon hendersonii</i>	X	X	Narrows #2 Powerhouse
	<i>Trientalis latifolia</i>	X	X	New Bullards Bar Reservoir
Pteridaceae	<i>Adiantum capillus-veneris</i>	X	X	New Colgate Powerhouse
	<i>Aspidotis densa</i>	X	X	New Bullards Bar Reservoir
	<i>Cheilanthes gracillima</i>	X	X	Our House Diversion Dam
	<i>Pellaea andromedifolia</i>		X	New Colgate Powerhouse
	<i>Pellaea mucronata</i>	X	X	Narrows #2 Powerhouse
	<i>Pentagramma triangularis</i>		X	Narrows #2 Powerhouse
	<i>Pentagramma triangularis ssp. triangularis</i>	X	X	Narrows #2 Powerhouse
Pyrolaceae	<i>Pyrola picta</i>	X		New Bullards Bar Reservoir
Ranunculaceae	<i>Actaea rubra</i>	X		New Bullards Bar Reservoir
	<i>Aquilegia formosa</i>	X		New Bullards Bar Reservoir (West)
	<i>Clematis lasiantha</i>	X	X	New Bullards Bar Reservoir
	<i>Clematis ligusticifolia</i>	X		New Bullards Bar Reservoir
	<i>Delphinium patens ssp. patens</i>	X	X	North Yuba River Arm
	<i>Delphinium variegatum ssp. variegatum</i>		X	Narrows #2 Powerhouse
	<i>Isopyrum occidentale</i>	X	X	New Bullards Bar Reservoir
	<i>Myosurus minimus</i>		X	Our House Diversion Dam
	<i>Ranunculus hebecarpus</i>		X	Narrows #2 Powerhouse
	<i>Ranunculus occidentalis var. occidentalis</i>	X	X	Narrows #2 Powerhouse
Rhamnaceae	<i>Ceanothus cuneatus</i>	X	X	Narrows #2 Powerhouse
	<i>Ceanothus cuneatus var. cuneatus</i>		X	Narrows #2 Powerhouse

Family ^a	Species Name ^b	General Location		Additional Location Description
		New Bullards Bar Reservoir	Other Project Features ^c	
	<i>Ceanothus integerrimus</i>	X	X	New Colgate Powerhouse
	<i>Ceanothus lemmonii</i>	X	X	Narrows #2 Powerhouse
	<i>Ceanothus prostratus</i>	X		New Bullards Bar Reservoir (East)
	<i>Ceanothus velutinus</i>	X		New Bullards Bar Reservoir
	<i>Rhamnus ilicifolia</i>	X	X	New Bullards Bar Reservoir
	<i>Rhamnus purshiana</i>		X	Our House Diversion Dam
	<i>Rhamnus rubra</i>		X	Log Cabin Dam
	<i>Rhamnus tomentella ssp. tomentella</i>	X	X	Narrows #2 Powerhouse
Rosaceae	<i>Amelanchier alnifolia</i>	X		North Yuba River Arm
	<i>Cercocarpus betuloides</i>	X	X	Our House Diversion Dam
	<i>Chamaebatia foliolosa</i>	X	X	New Bullards Bar Reservoir
	<i>Crataegus laevigata</i>	X		New Bullards Bar Reservoir
	<i>Fragaria vesca</i>		X	Log Cabin Dam
	<i>Fragaria virginiana</i>	X		New Bullards Bar Reservoir
	<i>Heteromeles arbutifolia</i>	X	X	Narrows #2 Powerhouse
	<i>Holodiscus microphyllus var. glabrescens</i>	X		North Yuba River Arm
	<i>Horkelia tridentata</i>	X		New Bullards Bar Reservoir (East)
	<i>Horkelia tridentata ssp. tridentata</i>	X		New Bullards Bar Reservoir (East)
	<i>Malus sylvestris</i>	X		New Bullards Bar Reservoir
	<i>Physocarpus capitatus</i>	X		North Yuba River Arm
	<i>Potentilla glandulosa ssp. glandulosa</i>	X	X	New Bullards Bar Reservoir
	<i>Prunus cerasifera</i>	X		New Bullards Bar Reservoir
	<i>Prunus subcordata</i>	X		North Yuba River Arm
	<i>Prunus virginiana var. demissa</i>		X	Log Cabin Dam
	<i>Pyracantha koidzumii</i>		X	New Colgate Powerhouse
	<i>Rosa eglanteria</i>	X		New Bullards Bar Reservoir
	<i>Rosa gymnocarpa</i>	X		New Bullards Bar Reservoir
	<i>Rosa spithamea</i>	X		New Bullards Bar Reservoir
	<i>Rosa woodsii var. ultramontana</i>	X		New Bullards Bar Reservoir
	<i>Rosa x odorata</i>		X	New Colgate Powerhouse

Family ^a	Species Name ^b	General Location		Additional Location Description
		New Bullards Bar Reservoir	Other Project Features ^c	
	<i>Rubus discolor</i>	X	X	Narrows #2 Powerhouse
	<i>Rubus laciniatus</i>		X	Our House Diversion Dam
	<i>Rubus leucodermis</i>	X	X	New Bullards Bar Reservoir
	<i>Rubus parviflorus</i>	X		New Bullards Bar Reservoir (Recreation Area)
	<i>Rubus ursinus</i>	X	X	New Bullards Bar Reservoir
	<i>Sanguisorba minor</i> ssp. <i>muricata</i>	X	X	New Colgate Powerhouse
Rubiaceae	<i>Cephalanthus occidentalis</i> var. <i>californicus</i>		X	Our House Diversion Dam
	<i>Galium aparine</i>	X	X	Narrows #2 Powerhouse
	<i>Galium parisiense</i>	X		New Bullards Bar Reservoir (East)
	<i>Galium porrigens</i> var. <i>tenue</i>	X	X	Narrows #2 Powerhouse
	<i>Galium trifidum</i> var. <i>pacificum</i>	X		New Bullards Bar Reservoir (Recreation Area)
	<i>Gallium triflorum</i>	X	X	Log Cabin Dam
	<i>Galium trifolium</i>	X		New Bullards Bar Reservoir
	<i>Sherardia arvensis</i>		X	Narrows #2 Powerhouse
Salicaceae	<i>Populus balsamifera</i> ssp. <i>trichocarpa</i>	X		New Bullards Bar Reservoir
	<i>Populus fremontii</i>	X		New Bullards Bar Reservoir
	<i>Salix goodingii</i>	X	X	New Bullards Bar Reservoir
	<i>Salix exigua</i>	X	X	New Colgate Powerhouse
	<i>Salix laevigata</i>	X		New Bullards Bar Reservoir (West)
	<i>Salix lasiolepis</i>	X		New Bullards Bar Reservoir
	<i>Salix lucida</i> ssp. <i>lasiandra</i>	X		New Bullards Bar Reservoir
Saxifragaceae	<i>Boykinia occidentalis</i>	X		North Yuba River Arm, Slate Creek
	<i>Boykinia major</i>	X		New Bullards Bar Reservoir
	<i>Darmera peltata</i>	X		New Bullards Bar Reservoir
	<i>Heuchera micrantha</i> var. <i>erubescens</i>	X		New Bullards Bar Reservoir
	<i>Lithophragma bolanderi</i>	X	X	Narrows #2 Powerhouse
	<i>Lithophragma campanulatum</i>	X		New Bullards Bar Reservoir
	<i>Lithophragma parviflorum</i>	X		New Bullards Bar Reservoir
	<i>Saxifraga californica</i>		X	Our House Diversion Dam
	<i>Saxifraga fallax</i>	X		New Bullards Bar Reservoir (West)

Family ^a	Species Name ^b	General Location		Additional Location Description
		New Bullards Bar Reservoir	Other Project Features ^c	
	<i>Saxifraga integrifolia</i>	X	X	Narrows #2 Powerhouse
	<i>Tellima grandiflora</i>	X		New Bullards Bar Reservoir
Scrophulariaceae	<i>Antirrhinum vexillo-calyculatum ssp. intermedium</i>	X		New Bullards Bar Reservoir Access Road
	<i>Castilleja affinis ssp. affinis</i>	X		New Bullards Bar Reservoir (Recreation Area)
	<i>Castilleja applegatei</i>	X	X	New Bullards Bar Reservoir
	<i>Castilleja attenuata</i>	X		New Bullards Bar Reservoir
	<i>Collinsia heterophylla</i>	X	X	New Bullards Bar Reservoir
	<i>Collinsia tinctoria</i>	X	X	New Bullards Bar Reservoir
	<i>Cordylanthus tenuis ssp. tenuis</i>	X		New Bullards Bar Reservoir
	<i>Digitalis purpurea</i>	X		New Bullards Bar Reservoir (Recreation Area)
	<i>Keckieella breviflora</i>	X	X	Narrows #2 Powerhouse
	<i>Mimulus aurantiacus</i>	X	X	Narrows #2 Powerhouse
	<i>Mimulus aurantiacus var. grandiflorus</i>		X	Narrows #2 Powerhouse
	<i>Mimulus bifidus ssp. bifidus</i>	X		New Bullards Bar Reservoir
	<i>Mimulus cardinalis</i>	X	X	New Bullards Bar Reservoir
	<i>Mimulus floribundus</i>		X	New Bullards Bar Reservoir
	<i>Mimulus guttatus</i>	X	X	Narrows #2 Powerhouse
	<i>Mimulus kelloggii</i>	X	X	New Bullards Bar Reservoir (East)
	<i>Mimulus layneae</i>	X		New Bullards Bar Reservoir
	<i>Mimulus lewisii</i>	X	X	Log Cabin Dam
	<i>Mimulus moschatus</i>	X		North Yuba River Arm
	<i>Mimulus pulsiferae</i>	X		New Bullards Bar Reservoir
	<i>Mimulus torreyi</i>	X	X	North Yuba River Arm
	<i>Pedicularis densiflora</i>	X	X	Log Cabin Dam
	<i>Penstemon azureus var. azureus</i>	X		New Bullards Bar Reservoir
	<i>Penstemon heterophyllus</i>	X	X	New Colgate Powerhouse
	<i>Penstemon heterophyllus var. purdyi</i>		X	Log Cabin Dam
	<i>Penstemon newberryi var. newberryi</i>	X		North Yuba River Arm
	<i>Scrophularia californica ssp. floribunda</i>		X	New Colgate Powerhouse
	<i>Verbascum blattaria</i>	X		New Bullards Bar Reservoir (East)

Family ^a	Species Name ^b	General Location		Additional Location Description
		New Bullards Bar Reservoir	Other Project Features ^c	
	<i>Verbascum thapsus</i>	X	X	Narrows #2 Powerhouse
	<i>Veronica americana</i>	X		New Bullards Bar Reservoir
	<i>Veronica arvensis</i>	X		New Bullards Bar Reservoir (Colgate Tunnel)
Selaginellaceae	<i>Selaginella wallacei</i>		X	Narrows #2 Powerhouse
Simaroubaceae	<i>Ailanthus altissima</i>		X	New Colgate Powerhouse
Solanaceae	<i>Datura wrightii</i>		X	New Colgate Powerhouse
	<i>Nicotiana acuminata</i> var. <i>multiflora</i>	X		New Bullards Bar Reservoir
	<i>Physalis acutifolia</i>	X		New Bullards Bar Reservoir
	<i>Solanum americanum</i>	X		New Bullards Bar Reservoir
	<i>Solanum parishii</i>	X		New Bullards Bar Reservoir (Colgate Tunnel)
	<i>Solanum xanti</i>		X	New Colgate Powerhouse
Styracaceae	<i>Styrax officinalis</i> var. <i>rediviva</i>	X		New Bullards Bar Reservoir
Taxaceae	<i>Taxus brevifolia</i>	X		New Bullards Bar Reservoir
Typhaceae	<i>Typha domingensis</i>		X	Narrows #2 Powerhouse
	<i>Typha latifolia</i>		X	Narrows #2 Powerhouse
Urticaceae	<i>Urtica dioica</i> ssp. <i>holosericea</i>	X		New Bullards Bar Reservoir
Valerianaceae	<i>Plectritis ciliosa</i> ssp. <i>insignis</i>	X		New Colgate Powerhouse
	<i>Plectritis congesta</i> ssp. <i>brachystemon</i>		X	Narrows #2 Powerhouse
	<i>Plectritis macrocera</i>		X	Narrows #2 Powerhouse
Verbenaceae	<i>Verbena bonariensis</i>	X	X	Narrows #2 Powerhouse
	<i>Verbena lasiostachys</i> var. <i>scabrida</i>	X		Slate Creek
Violaceae	<i>Viola adunca</i>	X		New Bullards Bar Reservoir
	<i>Viola glabella</i>	X		North Yuba River Arm
	<i>Viola lobata</i>	X	X	New Bullards Bar Reservoir
	<i>Viola lobata</i> ssp. <i>lobata</i>	X		New Bullards Bar Reservoir
	<i>Viola sheltonii</i>	X	X	New Bullards Bar Reservoir
Viscaceae	<i>Arceuthobium occidentale</i>		X	Narrows #2 Powerhouse
	<i>Phoradendron villosum</i>	X	X	Narrows #2 Powerhouse
Vitaceae	<i>Vitis californica</i>	X	X	Narrows #2 Powerhouse
	<i>Vitis vinifera</i>	X		New Bullards Bar Reservoir (Colgate Tunnel)

Family ^a	Species Name ^b	General Location		Additional Location Description
		New Bullards Bar Reservoir	Other Project Features ^c	

^aFamily and species name is based on the Jepson manual of higher plants of California (1993)

^bNon-italicized names = non-native species, ** = special-status species

^cAreas near Englebright, New Bullards Bar, Log Cabin Diversion, and Our House Dams; and, New Colgate Powerhouse

Technical Memorandum 7-1
Endangered Species Act-Listed Plants

Attachment 7-1B

USFWS Query: Yuba River Development Project

Yuba River Development Project
FERC Project No. 2246

December 2012

©2012, Yuba County Water Agency
All Rights Reserved

U.S. Fish & Wildlife Service
Sacramento Fish & Wildlife Office

**Federal Endangered and Threatened Species that Occur in
or may be Affected by Projects in the Counties and/or
U.S.G.S. 7 1/2 Minute Quads you requested**

Document Number: 120624052734

Database Last Updated: September 18, 2011

Quad Lists

GRASS VALLEY (542A)

Listed Species

Invertebrates

Desmocerus californicus dimorphus
valley elderberry longhorn beetle (T)

Fish

Hypomesus transpacificus
delta smelt (T)

Oncorhynchus mykiss
Central Valley steelhead (T) (NMFS)

Oncorhynchus tshawytscha
Central Valley spring-run chinook salmon (T) (NMFS)
winter-run chinook salmon, Sacramento River (E) (NMFS)

Amphibians

Rana draytonii
California red-legged frog (T)

Plants

Calystegia stebbinsii
Stebbins's morning-glory (E)

Fremontodendron californicum ssp. decumbens
Pine Hill flannelbush (E)

ROUGH AND READY (542B)

Listed Species

Invertebrates

Desmocerus californicus dimorphus
valley elderberry longhorn beetle (T)

Fish

Hypomesus transpacificus
delta smelt (T)

Oncorhynchus mykiss
Central Valley steelhead (T) (NMFS)

Oncorhynchus tshawytscha
Central Valley spring-run chinook salmon (T) (NMFS)
winter-run chinook salmon, Sacramento River (E) (NMFS)

Amphibians

Rana draytonii

California red-legged frog (T)

WOLF (542C)

Listed Species

Invertebrates

Desmocerus californicus dimorphus

valley elderberry longhorn beetle (T)

Fish

Hypomesus transpacificus

delta smelt (T)

Oncorhynchus mykiss

Central Valley steelhead (T) (NMFS)

Oncorhynchus tshawytscha

Central Valley spring-run chinook salmon (T) (NMFS)

winter-run chinook salmon, Sacramento River (E) (NMFS)

Amphibians

Rana draytonii

California red-legged frog (T)

SMARTVILLE (543A)

Listed Species

Invertebrates

Branchinecta lynchi

vernal pool fairy shrimp (T)

Desmocerus californicus dimorphus

valley elderberry longhorn beetle (T)

Fish

Hypomesus transpacificus

delta smelt (T)

Oncorhynchus mykiss

Central Valley steelhead (T) (NMFS)

Critical habitat, Central Valley steelhead (X) (NMFS)

Oncorhynchus tshawytscha

Central Valley spring-run chinook salmon (T) (NMFS)

Critical Habitat, Central Valley spring-run chinook (X) (NMFS)

winter-run chinook salmon, Sacramento River (E) (NMFS)

Amphibians

Rana draytonii

California red-legged frog (T)

Reptiles

Thamnophis gigas

giant garter snake (T)

BROWNS VALLEY (543B)

Listed Species

Invertebrates

Branchinecta conservatio

Conservancy fairy shrimp (E)

Branchinecta lynchi

Critical habitat, vernal pool fairy shrimp (X)

vernal pool fairy shrimp (T)

Desmocerus californicus dimorphus

valley elderberry longhorn beetle (T)

Lepidurus packardi

Critical habitat, vernal pool tadpole shrimp (X)

vernal pool tadpole shrimp (E)

Fish

Hypomesus transpacificus

delta smelt (T)

Oncorhynchus mykiss

Central Valley steelhead (T) (NMFS)

Critical habitat, Central Valley steelhead (X) (NMFS)

Oncorhynchus tshawytscha

Central Valley spring-run chinook salmon (T) (NMFS)

Critical Habitat, Central Valley spring-run chinook (X) (NMFS)

winter-run chinook salmon, Sacramento River (E) (NMFS)

Amphibians

Rana draytonii

California red-legged frog (T)

Reptiles

Thamnophis gigas

giant garter snake (T)

Candidate Species

Birds

Coccyzus americanus occidentalis

Western yellow-billed cuckoo (C)

WHEATLAND (543C)

Listed Species

Invertebrates

Branchinecta conservatio

Conservancy fairy shrimp (E)

Branchinecta lynchi

Critical habitat, vernal pool fairy shrimp (X)

vernal pool fairy shrimp (T)

Desmocerus californicus dimorphus

valley elderberry longhorn beetle (T)

Lepidurus packardi

Critical habitat, vernal pool tadpole shrimp (X)

vernal pool tadpole shrimp (E)

Fish

Hypomesus transpacificus

delta smelt (T)

Oncorhynchus mykiss

Central Valley steelhead (T) (NMFS)

Critical habitat, Central Valley steelhead (X) (NMFS)

Oncorhynchus tshawytscha

Central Valley spring-run chinook salmon (T) (NMFS)

winter-run chinook salmon, Sacramento River (E) (NMFS)

Amphibians

Rana draytonii

California red-legged frog (T)

Reptiles

Thamnophis gigas

giant garter snake (T)

Candidate Species

Birds

Coccyzus americanus occidentalis

Western yellow-billed cuckoo (C)

CAMP FAR WEST (543D)

Listed Species

Invertebrates

Branchinecta lynchi

vernal pool fairy shrimp (T)

Desmocerus californicus dimorphus

valley elderberry longhorn beetle (T)

Lepidurus packardii

vernal pool tadpole shrimp (E)

Fish

Hypomesus transpacificus

delta smelt (T)

Oncorhynchus mykiss

Central Valley steelhead (T) (NMFS)

Critical habitat, Central Valley steelhead (X) (NMFS)

Oncorhynchus tshawytscha

Central Valley spring-run chinook salmon (T) (NMFS)

winter-run chinook salmon, Sacramento River (E) (NMFS)

Amphibians

Rana draytonii

California red-legged frog (T)

Reptiles

Thamnophis gigas

giant garter snake (T)

PIKE (557B)

Listed Species

Fish

Hypomesus transpacificus

delta smelt (T)

Oncorhynchus tshawytscha

Central Valley spring-run chinook salmon (T) (NMFS)

winter-run chinook salmon, Sacramento River (E) (NMFS)

Amphibians

Rana draytonii

California red-legged frog (T)

Candidate Species

Mammals

Martes pennanti

fisher (C)

NORTH BLOOMFIELD (557C)

Listed Species

Fish

Hypomesus transpacificus

delta smelt (T)

Oncorhynchus mykiss

Central Valley steelhead (T) (NMFS)

Oncorhynchus tshawytscha

Central Valley spring-run chinook salmon (T) (NMFS)

winter-run chinook salmon, Sacramento River (E) (NMFS)

Amphibians

Rana draytonii

California red-legged frog (T)

Critical habitat, California red-legged frog (X)

Candidate Species

Mammals

Martes pennanti

fisher (C)

CAMPTONVILLE (558A)

Listed Species

Invertebrates

Desmocerus californicus dimorphus

valley elderberry longhorn beetle (T)

Fish

Hypomesus transpacificus

delta smelt (T)

Oncorhynchus tshawytscha

Central Valley spring-run chinook salmon (T) (NMFS)

winter-run chinook salmon, Sacramento River (E) (NMFS)

Amphibians

Rana draytonii

California red-legged frog (T)

Candidate Species

Mammals

Martes pennanti

fisher (C)

CHALLENGE (558B)

Listed Species

Invertebrates

Desmocerus californicus dimorphus
valley elderberry longhorn beetle (T)

Fish

Hypomesus transpacificus
delta smelt (T)

Oncorhynchus mykiss
Central Valley steelhead (T) (NMFS)

Oncorhynchus tshawytscha
Central Valley spring-run chinook salmon (T) (NMFS)
winter-run chinook salmon, Sacramento River (E) (NMFS)

Amphibians

Rana draytonii
California red-legged frog (T)
Critical habitat, California red-legged frog (X)

Plants

Senecio layneae
Layne's butterweed (=ragwort) (T)

Candidate Species

Mammals

Martes pennanti
fisher (C)

FRENCH CORRAL (558C)

Listed Species

Invertebrates

Desmocerus californicus dimorphus
valley elderberry longhorn beetle (T)

Fish

Hypomesus transpacificus
delta smelt (T)

Oncorhynchus mykiss
Central Valley steelhead (T) (NMFS)

Oncorhynchus tshawytscha
Central Valley spring-run chinook salmon (T) (NMFS)
winter-run chinook salmon, Sacramento River (E) (NMFS)

Amphibians

Rana draytonii
California red-legged frog (T)

NEVADA CITY (558D)

Listed Species

Invertebrates

Desmocerus californicus dimorphus
valley elderberry longhorn beetle (T)

Fish

Hypomesus transpacificus
delta smelt (T)

Oncorhynchus mykiss
Central Valley steelhead (T) (NMFS)

Oncorhynchus tshawytscha
Central Valley spring-run chinook salmon (T) (NMFS)
winter-run chinook salmon, Sacramento River (E) (NMFS)

Amphibians

Rana draytonii
California red-legged frog (T)
Critical habitat, California red-legged frog (X)

Candidate Species

Mammals

Martes pennanti
fisher (C)

RACKERBY (559A)

Listed Species

Invertebrates

Branchinecta lynchi
vernal pool fairy shrimp (T)

Desmocerus californicus dimorphus
valley elderberry longhorn beetle (T)

Fish

Hypomesus transpacificus
delta smelt (T)

Oncorhynchus mykiss
Central Valley steelhead (T) (NMFS)

Oncorhynchus tshawytscha
Central Valley spring-run chinook salmon (T) (NMFS)
winter-run chinook salmon, Sacramento River (E) (NMFS)

Amphibians

Rana draytonii
California red-legged frog (T)

Plants

Senecio layneae
Layne's butterweed (=ragwort) (T)

BANGOR (559B)

Listed Species

Invertebrates

Branchinecta lynchi
vernal pool fairy shrimp (T)

Desmocerus californicus dimorphus

valley elderberry longhorn beetle (T)

Lepidurus packardi

vernal pool tadpole shrimp (E)

Fish

Hypomesus transpacificus

delta smelt (T)

Oncorhynchus mykiss

Central Valley steelhead (T) (NMFS)

Oncorhynchus tshawytscha

Central Valley spring-run chinook salmon (T) (NMFS)

winter-run chinook salmon, Sacramento River (E) (NMFS)

Amphibians

Rana draytonii

California red-legged frog (T)

Reptiles

Thamnophis gigas

giant garter snake (T)

LOMA RICA (559C)

Listed Species

Invertebrates

Branchinecta lynchi

vernal pool fairy shrimp (T)

Desmocerus californicus dimorphus

valley elderberry longhorn beetle (T)

Lepidurus packardi

vernal pool tadpole shrimp (E)

Fish

Hypomesus transpacificus

delta smelt (T)

Oncorhynchus mykiss

Central Valley steelhead (T) (NMFS)

Oncorhynchus tshawytscha

Central Valley spring-run chinook salmon (T) (NMFS)

winter-run chinook salmon, Sacramento River (E) (NMFS)

Amphibians

Rana draytonii

California red-legged frog (T)

Reptiles

Thamnophis gigas

giant garter snake (T)

Candidate Species

Birds

Coccyzus americanus occidentalis

Western yellow-billed cuckoo (C)

OREGON HOUSE (559D)

Listed Species

Invertebrates

Branchinecta lynchi

vernal pool fairy shrimp (T)

Desmocerus californicus dimorphus

valley elderberry longhorn beetle (T)

Fish

Hypomesus transpacificus

delta smelt (T)

Oncorhynchus mykiss

Central Valley steelhead (T) (NMFS)

Critical habitat, Central Valley steelhead (X) (NMFS)

Oncorhynchus tshawytscha

Central Valley spring-run chinook salmon (T) (NMFS)

Critical Habitat, Central Valley spring-run chinook (X) (NMFS)

winter-run chinook salmon, Sacramento River (E) (NMFS)

Amphibians

Rana draytonii

California red-legged frog (T)

Reptiles

Thamnophis gigas

giant garter snake (T)

LA PORTE (573B)

Listed Species

Fish

Hypomesus transpacificus

delta smelt (T)

Oncorhynchus tshawytscha

Central Valley spring-run chinook salmon (T) (NMFS)

winter-run chinook salmon, Sacramento River (E) (NMFS)

Amphibians

Rana draytonii

California red-legged frog (T)

Candidate Species

Amphibians

Rana muscosa

mountain yellow-legged frog (C)

Mammals

Martes pennanti

fisher (C)

GOODYEARS BAR (573C)

Listed Species

Fish

Hypomesus transpacificus

delta smelt (T)

Oncorhynchus tshawytscha

Central Valley spring-run chinook salmon (T) (NMFS)

winter-run chinook salmon, Sacramento River (E) (NMFS)

Amphibians

Rana draytonii

California red-legged frog (T)

Candidate Species

Mammals

Martes pennanti

fisher (C)

AMERICAN HOUSE (574A)

Listed Species

Fish

Hypomesus transpacificus

delta smelt (T)

Oncorhynchus tshawytscha

Central Valley spring-run chinook salmon (T) (NMFS)

winter-run chinook salmon, Sacramento River (E) (NMFS)

Amphibians

Rana draytonii

California red-legged frog (T)

Candidate Species

Amphibians

Rana muscosa

mountain yellow-legged frog (C)

Mammals

Martes pennanti

fisher (C)

CASCADE (574B)

Listed Species

Fish

Hypomesus transpacificus

delta smelt (T)

Oncorhynchus tshawytscha

Central Valley spring-run chinook salmon (T) (NMFS)

winter-run chinook salmon, Sacramento River (E) (NMFS)

Amphibians

Rana draytonii

California red-legged frog (T)

Candidate Species

Amphibians

Rana muscosa

mountain yellow-legged frog (C)

Mammals

Martes pennanti

fisher (C)

CLIPPER MILLS (574C)

Listed Species

Fish

Hypomesus transpacificus

delta smelt (T)

Oncorhynchus mykiss

Central Valley steelhead (T) (NMFS)

Oncorhynchus tshawytscha

Central Valley spring-run chinook salmon (T) (NMFS)

winter-run chinook salmon, Sacramento River (E) (NMFS)

Amphibians

Rana draytonii

California red-legged frog (T)

Plants

Senecio layneae

Layne's butterweed (=ragwort) (T)

Candidate Species

Amphibians

Rana muscosa

mountain yellow-legged frog (C)

Mammals

Martes pennanti

fisher (C)

STRAWBERRY VALLEY (574D)

Listed Species

Fish

Hypomesus transpacificus

delta smelt (T)

Oncorhynchus tshawytscha

Central Valley spring-run chinook salmon (T) (NMFS)

winter-run chinook salmon, Sacramento River (E) (NMFS)

Amphibians

Rana draytonii

California red-legged frog (T)

Candidate Species

Mammals

Martes pennanti

fisher (C)

BRUSH CREEK (575A)

Listed Species

Invertebrates

Desmocerus californicus dimorphus

valley elderberry longhorn beetle (T)

Fish

Hypomesus transpacificus

delta smelt (T)

Oncorhynchus mykiss

Central Valley steelhead (T) (NMFS)

Oncorhynchus tshawytscha

Central Valley spring-run chinook salmon (T) (NMFS)

winter-run chinook salmon, Sacramento River (E) (NMFS)

Amphibians

Rana draytonii

California red-legged frog (T)

Critical habitat, California red-legged frog (X)

Candidate Species

Amphibians

Rana muscosa

mountain yellow-legged frog (C)

Mammals

Martes pennanti

fisher (C)

FORBESTOWN (575D)

Listed Species

Invertebrates

Desmocerus californicus dimorphus

valley elderberry longhorn beetle (T)

Fish

Hypomesus transpacificus

delta smelt (T)

Oncorhynchus mykiss

Central Valley steelhead (T) (NMFS)

Oncorhynchus tshawytscha

Central Valley spring-run chinook salmon (T) (NMFS)

winter-run chinook salmon, Sacramento River (E) (NMFS)

Amphibians

Rana draytonii

California red-legged frog (T)

Candidate Species

Amphibians

Rana muscosa

mountain yellow-legged frog (C)

Mammals

Martes pennanti

fisher (C)

County Lists

Yuba County

Listed Species

Invertebrates

Branchinecta conservatio

Conservancy fairy shrimp (E)

Branchinecta lynchi

Critical habitat, vernal pool fairy shrimp (X)

vernal pool fairy shrimp (T)

Desmocerus californicus dimorphus

valley elderberry longhorn beetle (T)

Lepidurus packardi

Critical habitat, vernal pool tadpole shrimp (X)

vernal pool tadpole shrimp (E)

Fish

Acipenser medirostris

green sturgeon (T) (NMFS)

Hypomesus transpacificus

delta smelt (T)

Oncorhynchus mykiss

Central Valley steelhead (T) (NMFS)

Critical habitat, Central Valley steelhead (X) (NMFS)

Oncorhynchus tshawytscha

Central Valley spring-run chinook salmon (T) (NMFS)

Critical Habitat, Central Valley spring-run chinook (X) (NMFS)

winter-run chinook salmon, Sacramento River (E) (NMFS)

Amphibians

Ambystoma californiense

California tiger salamander, central population (T)

Rana draytonii

California red-legged frog (T)

Critical habitat, California red-legged frog (X)

Reptiles

Thamnophis gigas

giant garter snake (T)

Plants

Pseudobahia bahiifolia

Hartweg's golden sunburst (E)

Senecio layneae

Layne's butterweed (=ragwort) (T)

Candidate Species

Amphibians

Rana muscosa
mountain yellow-legged frog (C)

Birds

Coccyzus americanus occidentalis
Western yellow-billed cuckoo (C)

Mammals

Martes pennanti
fisher (C)

Key:

(E) *Endangered* - Listed as being in danger of extinction.

(T) *Threatened* - Listed as likely to become endangered within the foreseeable future.

(P) *Proposed* - Officially proposed in the Federal Register for listing as endangered or threatened.

(NMFS) Species under the Jurisdiction of the [National Oceanic & Atmospheric Administration Fisheries Service](#). Consult with them directly about these species.

Critical Habitat - Area essential to the conservation of a species.

(PX) *Proposed Critical Habitat* - The species is already listed. Critical habitat is being proposed for it.

(C) *Candidate* - Candidate to become a proposed species.

(V) Vacated by a court order. Not currently in effect. Being reviewed by the Service.

(X) *Critical Habitat* designated for this species

Important Information About Your Species List

How We Make Species Lists

We store information about endangered and threatened species lists by U.S. Geological Survey 7½ minute quads. The United States is divided into these quads, which are about the size of San Francisco.

The animals on your species list are ones that occur within, **or may be affected by** projects within, the quads covered by the list.

- Fish and other aquatic species appear on your list if they are in the same watershed as your quad or if water use in your quad might affect them.
- Amphibians will be on the list for a quad or county if pesticides applied in that area may be carried to their habitat by air currents.
- Birds are shown regardless of whether they are resident or migratory. Relevant birds on the county list should be considered regardless of whether they appear on a quad list.

Plants

Any plants on your list are ones that have actually been observed in the area covered by the list. Plants may exist in an area without ever having been detected there. You can find out what's in the surrounding quads through the California Native Plant Society's online [Inventory of Rare and Endangered Plants](#).

Surveying

Some of the species on your list may not be affected by your project. A trained biologist and/or botanist, familiar with the habitat requirements of the species on your list, should determine whether they or habitats suitable for them may be affected by your project. We recommend that your surveys include any proposed and candidate species on your list. See our [Protocol](#) and [Recovery Permits](#) pages.

For plant surveys, we recommend using the [Guidelines for Conducting and Reporting Botanical Inventories](#). The results of your surveys should be published in any environmental documents prepared for your project.

Your Responsibilities Under the Endangered Species Act

All animals identified as listed above are fully protected under the Endangered Species Act of 1973, as amended. Section 9 of the Act and its implementing regulations prohibit the take of a federally listed wildlife species. Take is defined by the Act as "to harass, harm, pursue, hunt, shoot, wound, kill, trap, capture, or collect" any such animal.

Take may include significant habitat modification or degradation where it actually kills or injures wildlife by significantly impairing essential behavioral patterns, including breeding, feeding, or shelter (50 CFR §17.3).

Take incidental to an otherwise lawful activity may be authorized by one of two procedures:

- If a Federal agency is involved with the permitting, funding, or carrying out of a project that may result in take, then that agency must engage in a formal [consultation](#) with the Service.

During formal consultation, the Federal agency, the applicant and the Service work together to avoid or minimize the impact on listed species and their habitat. Such consultation would result in a biological opinion by the Service addressing the anticipated effect of the project on listed and proposed species. The opinion may authorize a limited level of incidental take.

- If no Federal agency is involved with the project, and federally listed species may be taken as part of the project, then you, the applicant, should apply for an incidental take permit. The Service may issue such a permit if you submit a satisfactory conservation plan for the species that would be affected by your project.

Should your survey determine that federally listed or proposed species occur in the area and are likely to be affected by the project, we recommend that you work with this office and the California Department of Fish and Game to develop a plan that minimizes the project's direct and indirect impacts to listed species and compensates for project-related loss of habitat. You should include the plan in any environmental documents you file.

Critical Habitat

When a species is listed as endangered or threatened, areas of habitat considered essential to its conservation may be designated as critical habitat. These areas may require special management considerations or protection. They provide needed space for growth and normal behavior; food, water, air, light, other nutritional or physiological requirements; cover or shelter; and sites for breeding, reproduction, rearing of offspring, germination or seed dispersal.

Although critical habitat may be designated on private or State lands, activities on these lands are not restricted unless there is Federal involvement in the activities or direct harm to listed wildlife.

If any species has proposed or designated critical habitat within a quad, there will be a separate line for this on the species list. Boundary descriptions of the critical habitat may be found in the Federal Register. The information is also reprinted in the Code of Federal Regulations (50 CFR 17.95). See our [Map Room](#) page.

Candidate Species

We recommend that you address impacts to candidate species. We put plants and animals on our candidate list when we have enough scientific information to eventually propose them for listing as threatened or endangered. By considering these species early in your planning process you may be able to avoid the problems that could develop if one of these candidates was listed before the end of your project.

Species of Concern

The Sacramento Fish & Wildlife Office no longer maintains a list of species of concern. However, various other agencies and organizations maintain lists of at-risk species. These lists provide essential information for land management planning and conservation efforts.

[More info](#)

Wetlands

If your project will impact wetlands, riparian habitat, or other jurisdictional waters as defined by section 404 of the Clean Water Act and/or section 10 of the Rivers and Harbors Act, you will need to obtain a permit from the U.S. Army Corps of Engineers. Impacts to wetland habitats require site specific mitigation and monitoring. For questions regarding wetlands, please contact Mark Littlefield of this office at (916) 414-6520.

Updates

Our database is constantly updated as species are proposed, listed and delisted. If you address proposed and candidate species in your planning, this should not be a problem. However, we recommend that you get an updated list every 90 days. That would be September 22, 2012.

Technical Memorandum 7-1

Endangered Species Act-Listed Plants

Attachment 7-1C

ESA-Listed Plants Inaccessible Study Area

Yuba River Development Project
FERC Project No. 2246

December 2012

©2012, Yuba County Water Agency
All Rights Reserved

Figure No.	List of Figures Description	Page No.
1.	ESA-listed plants inaccessible study area page 1 of 8.....	C-1
2.	ESA-listed plants inaccessible study area page 2 of 8.....	C-2
3.	ESA-listed plants inaccessible study area page 3 of 8.....	C-3
4.	ESA-listed plants inaccessible study area page 4 of 8.....	C-4
5.	ESA-listed plants inaccessible study area page 5 of 8.....	C-5
6.	ESA-listed plants inaccessible study area page 6 of 8.....	C-6
7.	ESA-listed plants inaccessible study area page 7 of 8.....	C-7
8.	ESA-listed plants inaccessible study area page 8 of 8.....	C-8

Page Left Blank

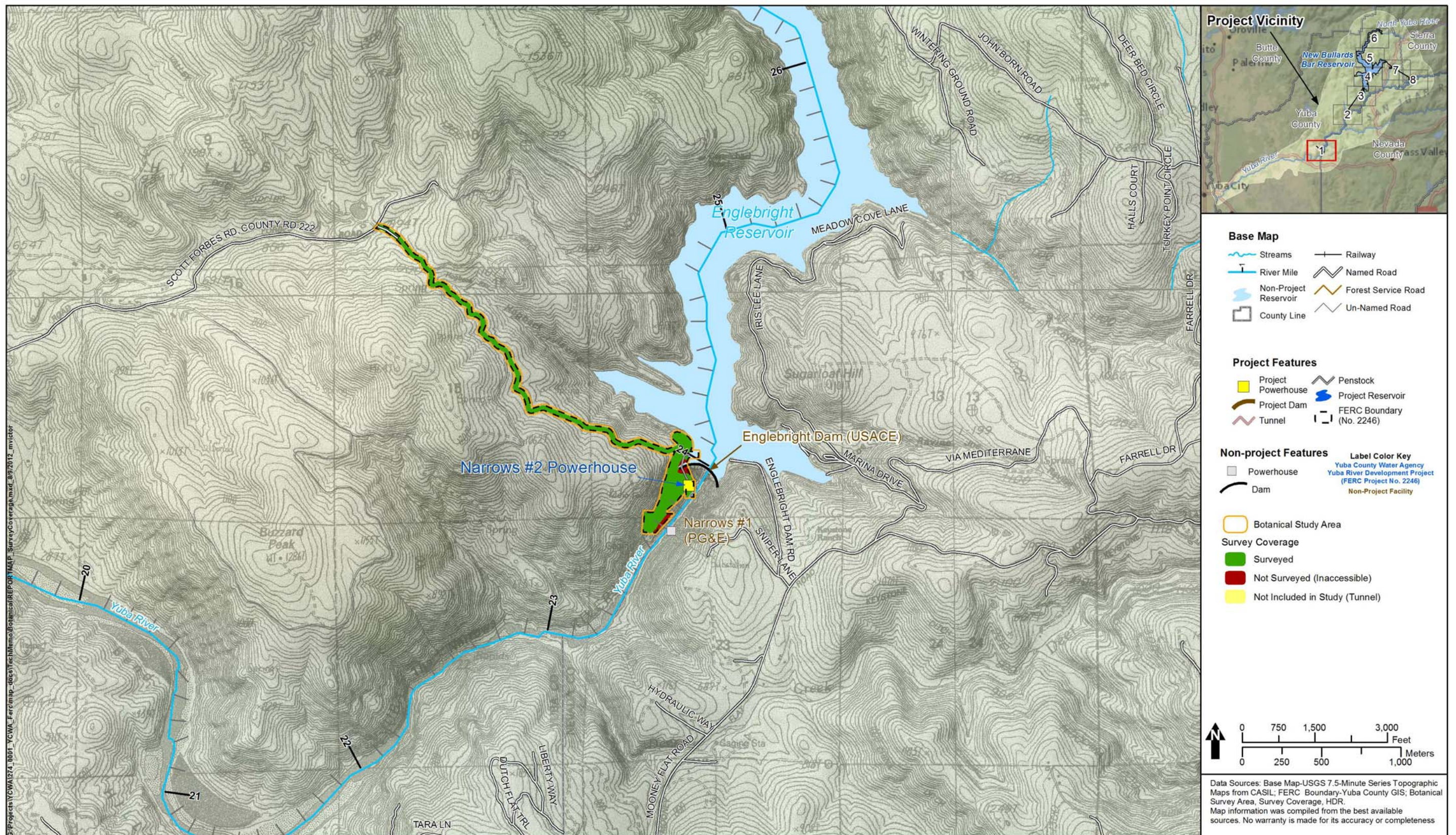


Figure 1. ESA-listed plants inaccessible study area page 1 of 8.

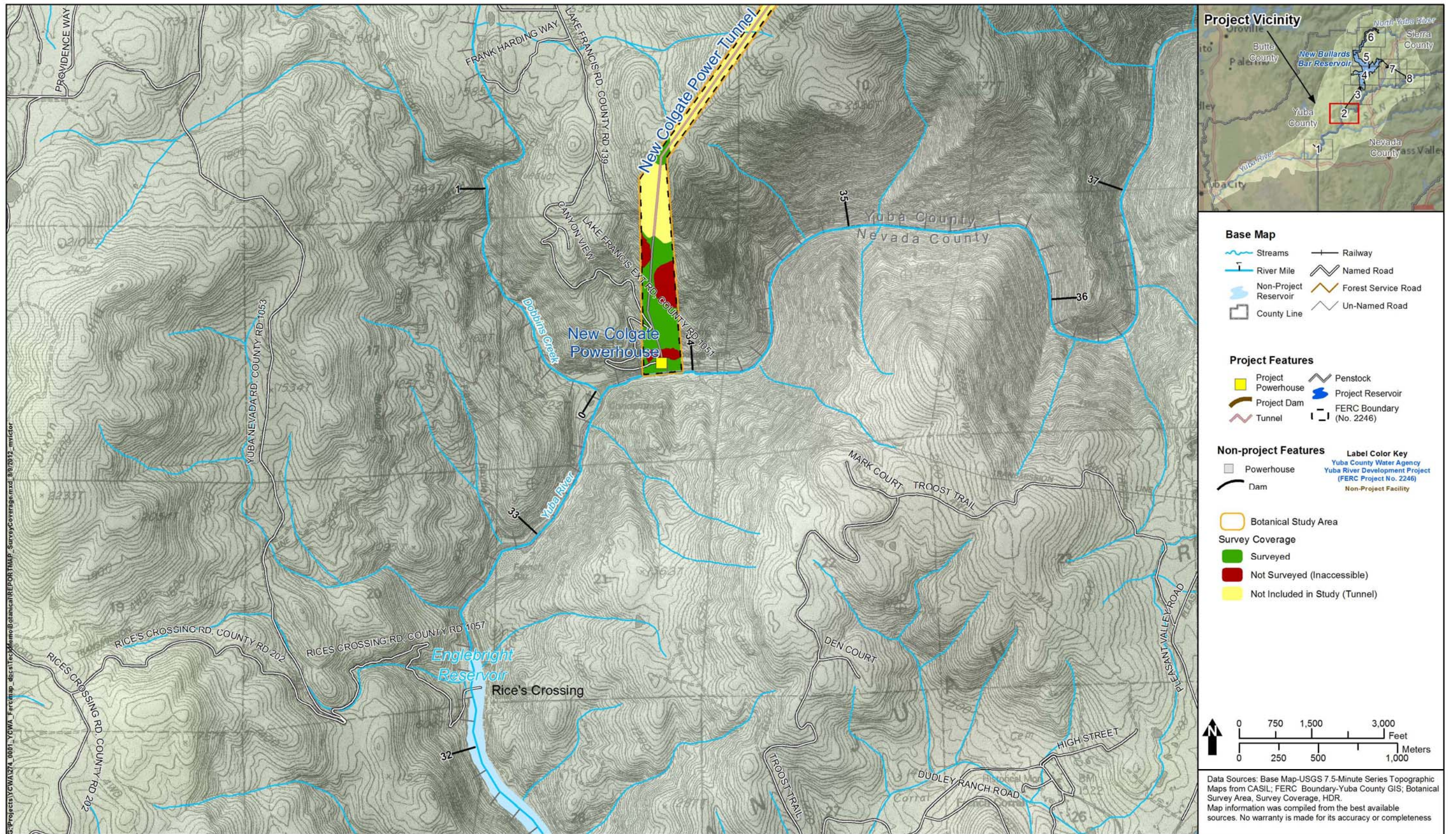


Figure 2. ESA-listed plants inaccessible study area page 2 of 8.

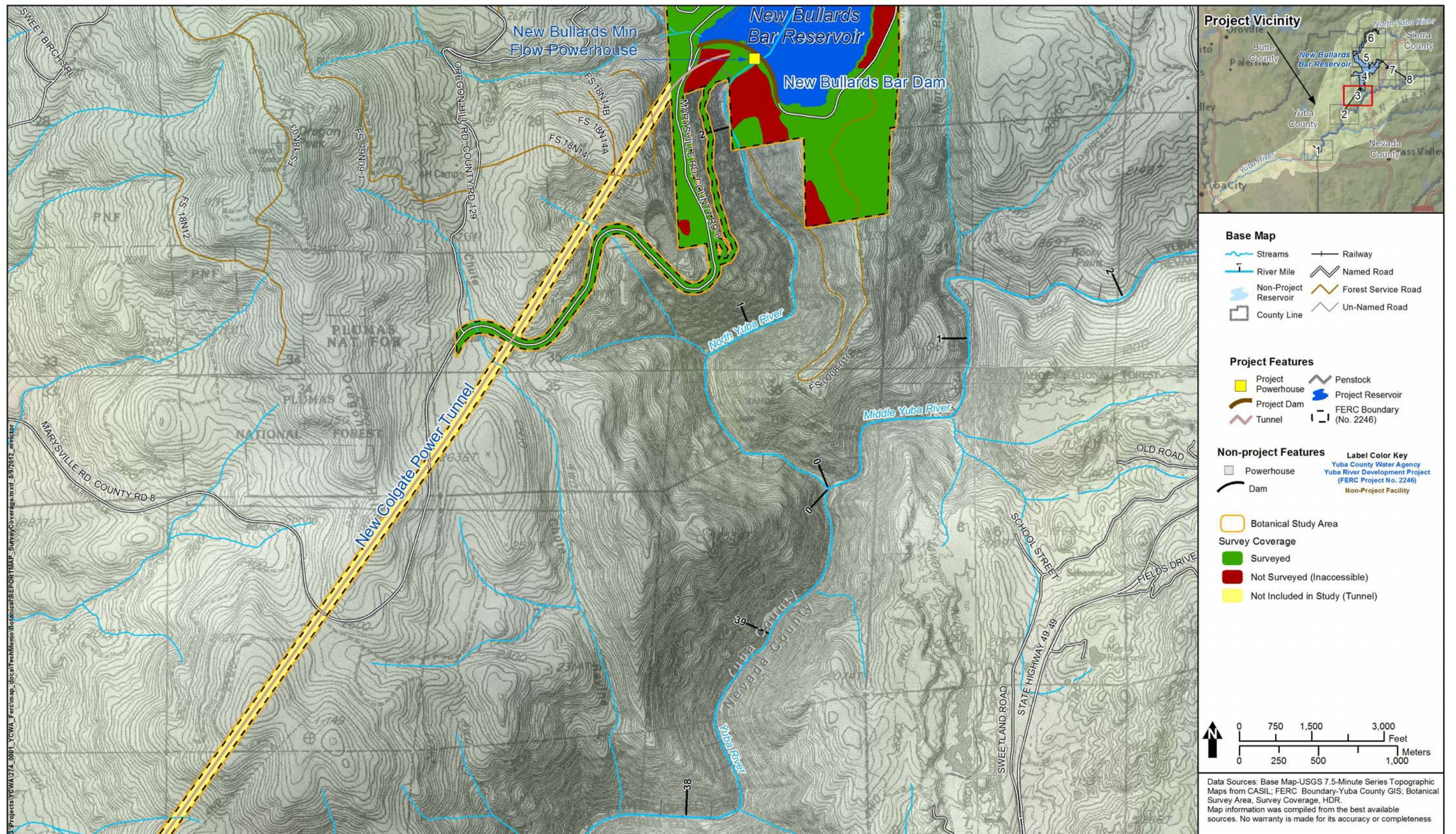


Figure 3. ESA-listed plants inaccessible study area page 3 of 8.

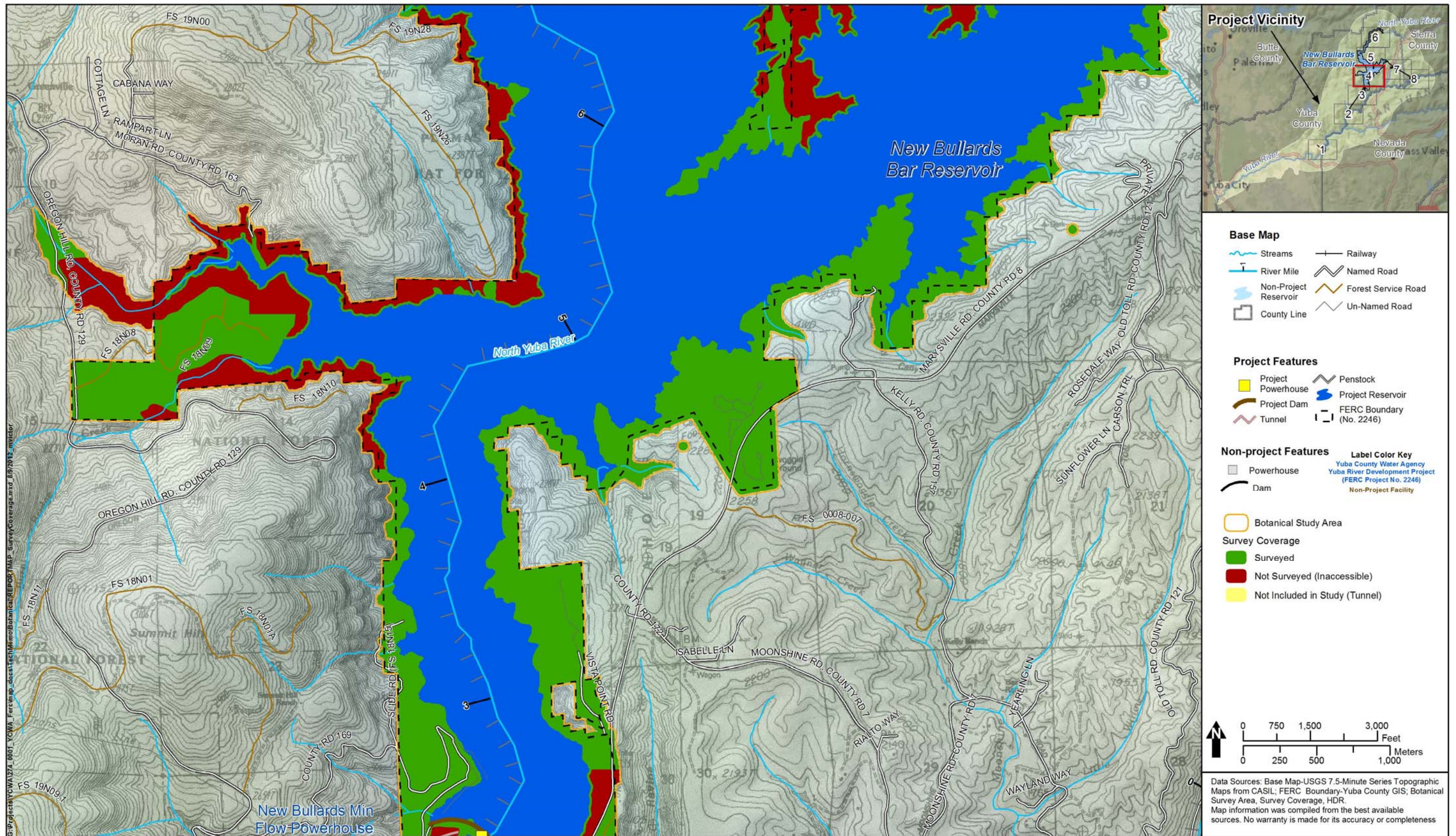


Figure 4. ESA-listed plants inaccessible study area page 4 of 8.

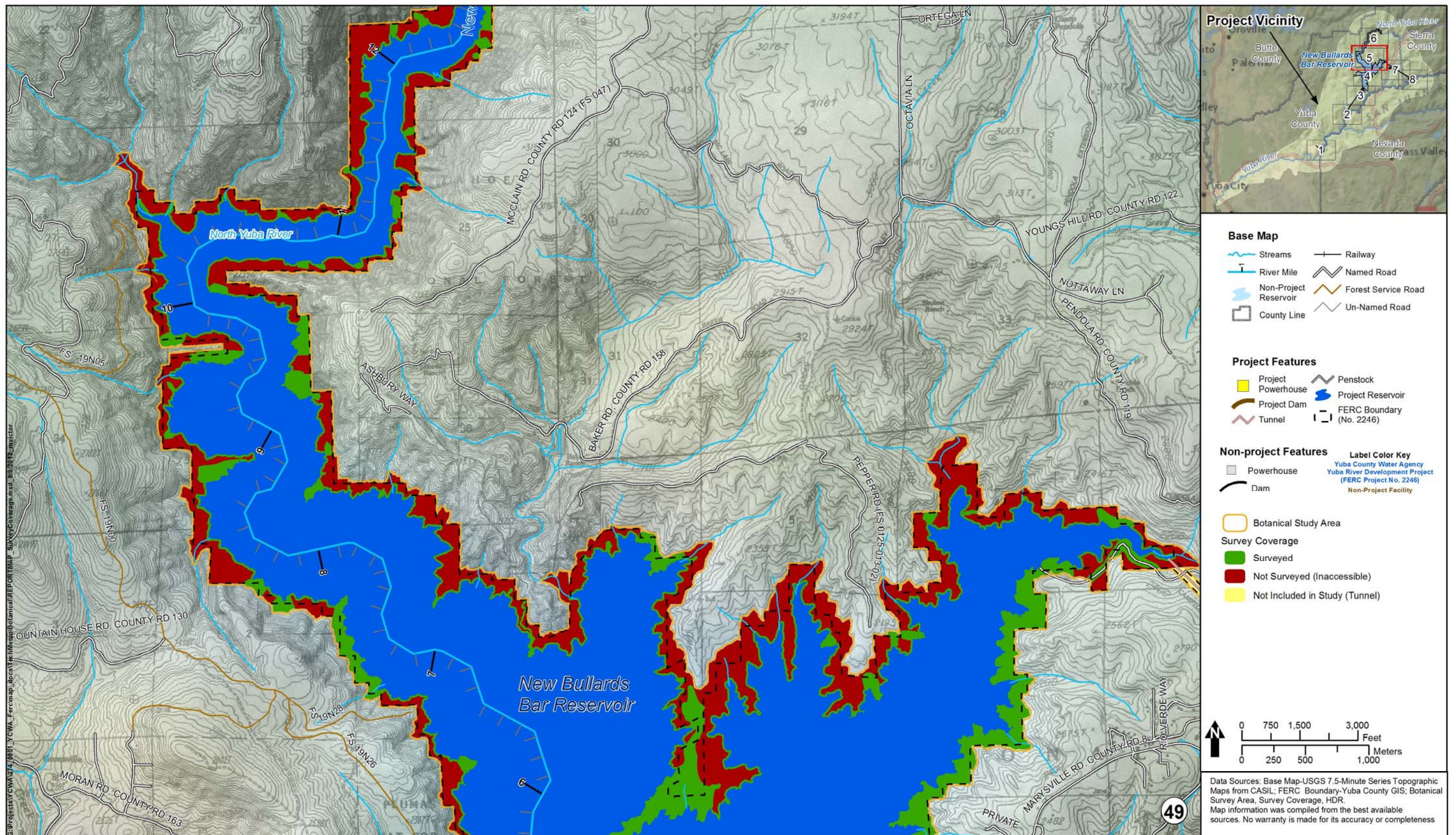


Figure 5. ESA-listed plants inaccessible study area page 5 of 8.

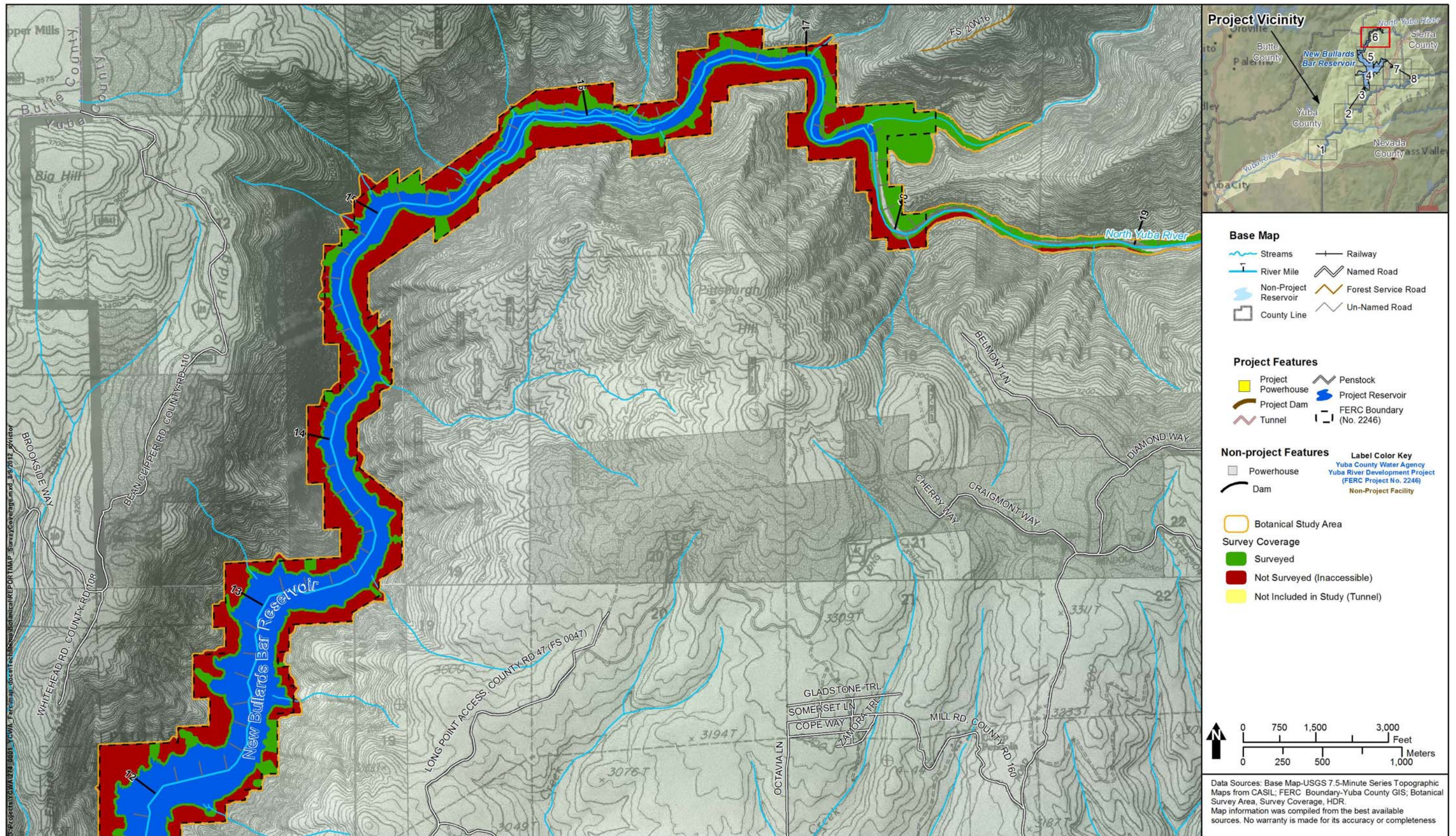


Figure 6. ESA-listed plants inaccessible study area page 6 of 8.

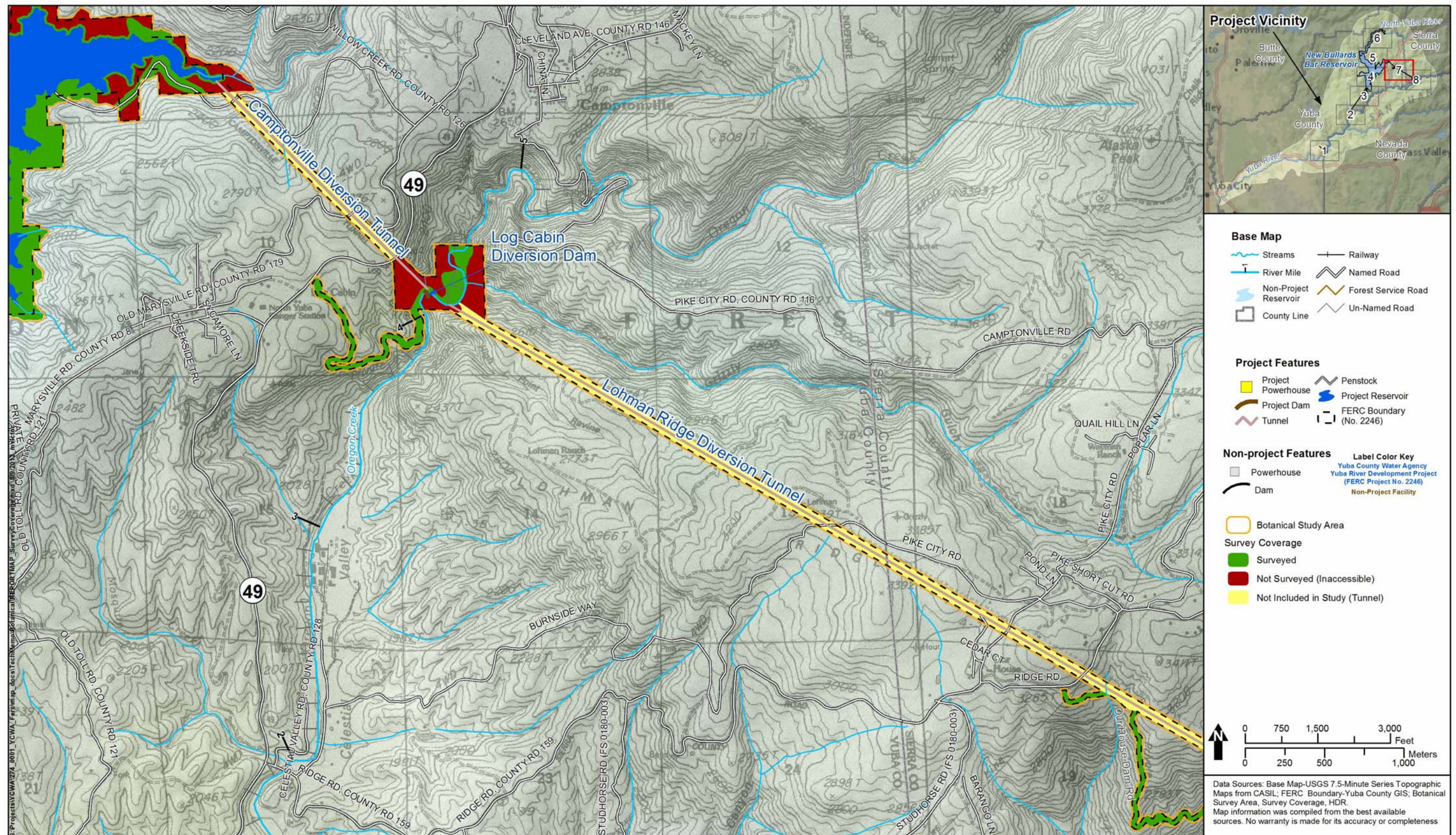


Figure 7. ESA-listed plants inaccessible study area page 7 of 8.

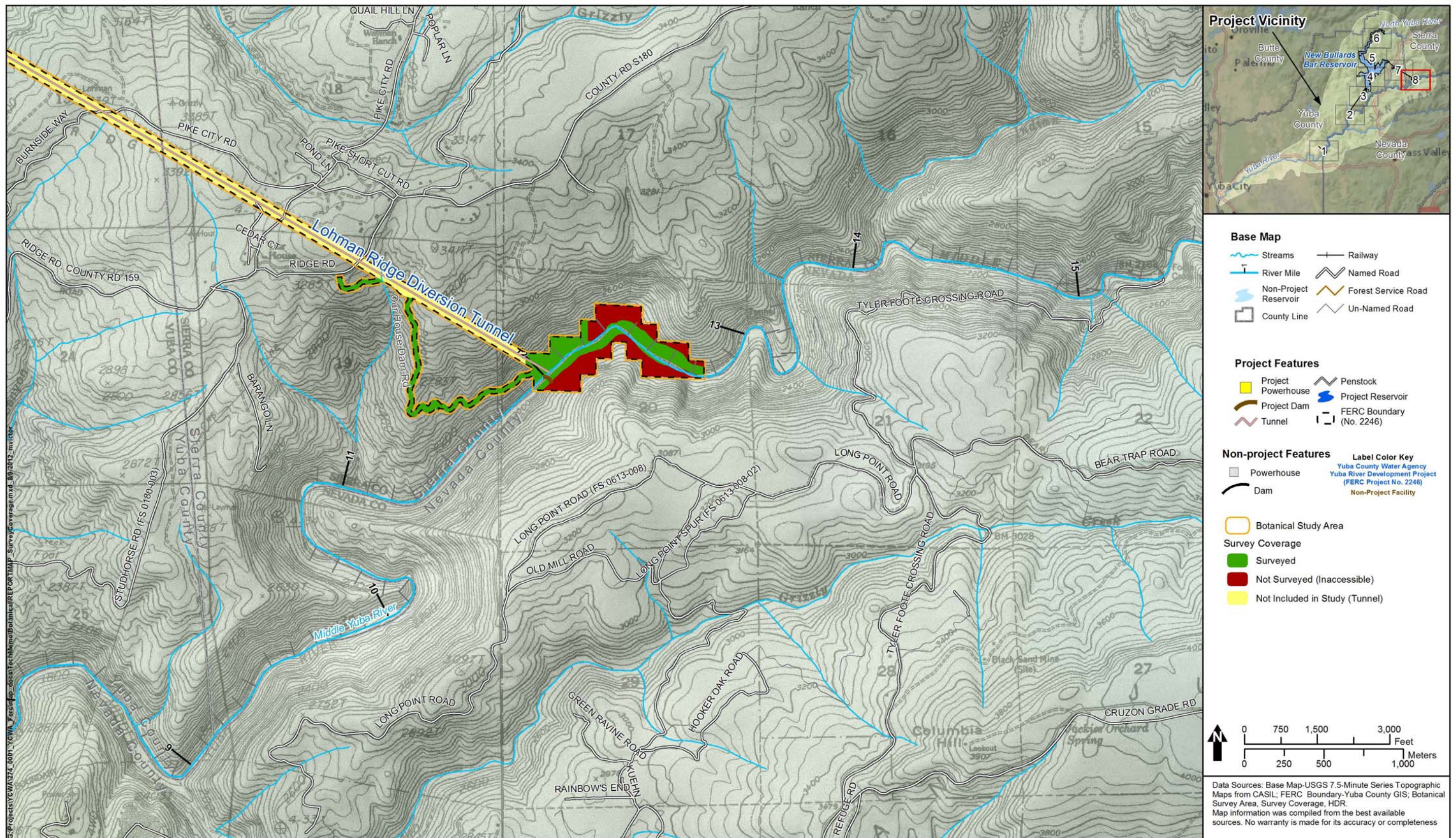


Figure 8. ESA-listed plants inaccessible study area page 8 of 8.